The background is a vibrant yellow. It is decorated with several abstract geometric shapes in shades of blue, teal, and white. These include circles, semi-circles, and rounded rectangular shapes, some of which are layered or overlapping. The shapes are scattered across the page, creating a modern and dynamic visual effect.

**Appendix A6.1**  
Sub Appendix  
**Appendix 2 -**  
Junction Design Report

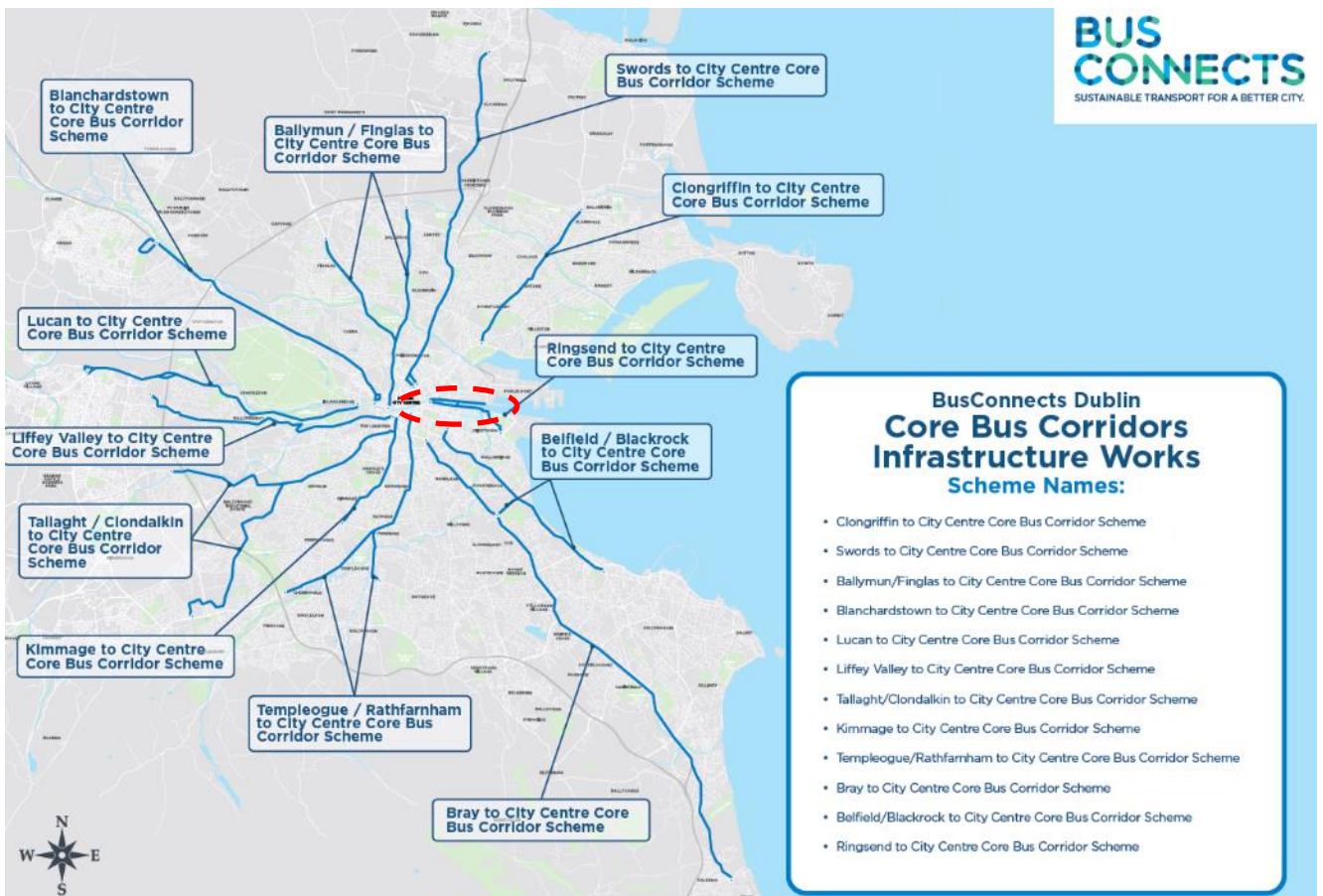
## Contents

<b>1</b>	<b>Introduction.....</b>	<b>1</b>
1.1	Introduction.....	1
<b>2</b>	<b>Methodology .....</b>	<b>2</b>
2.1	Junction Design Evolution.....	2
2.2	Transport Modelling.....	3
2.3	People Movement at Signals Calculator .....	6
<b>3</b>	<b>Junctions Assessed.....</b>	<b>8</b>
<b>4</b>	<b>Junction Design and Modelling Results .....</b>	<b>9</b>

# 1 Introduction

## 1.1 Introduction

This report has been prepared to document the evolution of the design of key junctions along the Ringsend to City Centre Core Bus Corridor (CBC) Scheme (hereafter referred the Proposed Scheme) and is illustrated in Figure 1. In addition, the report presents the junction assessment results for the final scheme design which demonstrates the expected operation of the junction. Finally, a theoretical assessment has been carried out to demonstrate the theoretical capacity of the junctions for all modes. The methodology adopted is elaborated upon in the following sections.



**Figure 1-1: Proposed Scheme Route Overview**

## 2 Methodology

### 2.1 Junction Design Evolution

The Proposed Scheme has been designed over the course of a number of years, and during this period the design principles have evolved to improve the movements of people through the junctions for all modes. The final design principles which guided the junction design are documented in the BusConnects Preliminary Design Guidance Booklet [BCODG] document. The design guidance document sets out four typical junctions arrangements that could be adopted to achieve bus priority - referred to in order of preference as Junction Types 1-4. Only Junction Type 1 is proposed on the Ringsend CBC scheme and the other options are therefore not discussed herein.

#### 2.1.1.1 Junction Type 1

Junction Type 1 comprises dedicated bus lanes up to the junction stop line and general traffic travelling both straight ahead and turning left is restricted to one lane.

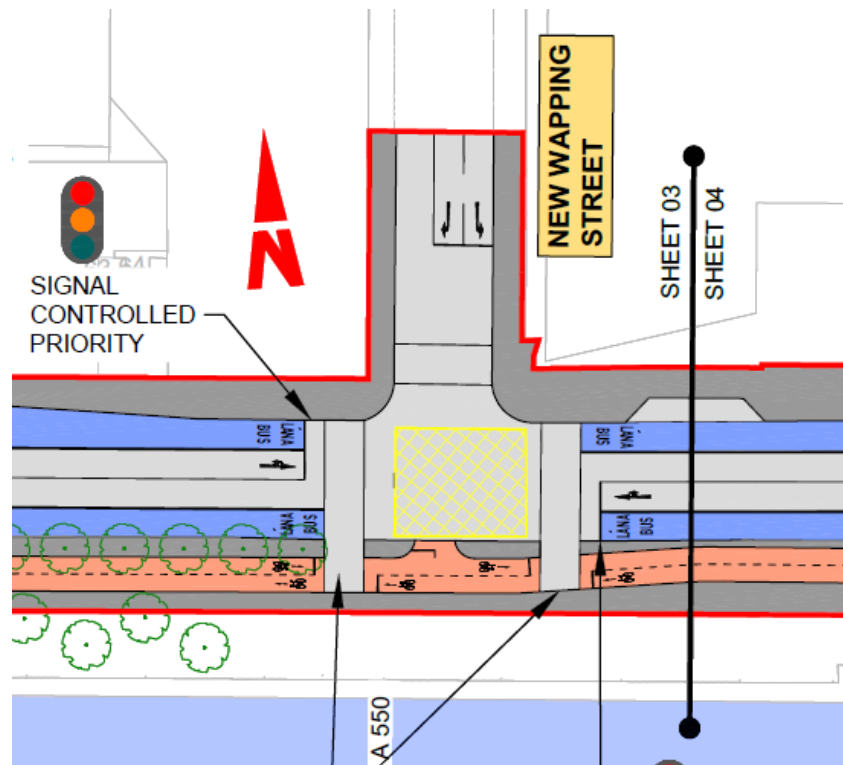


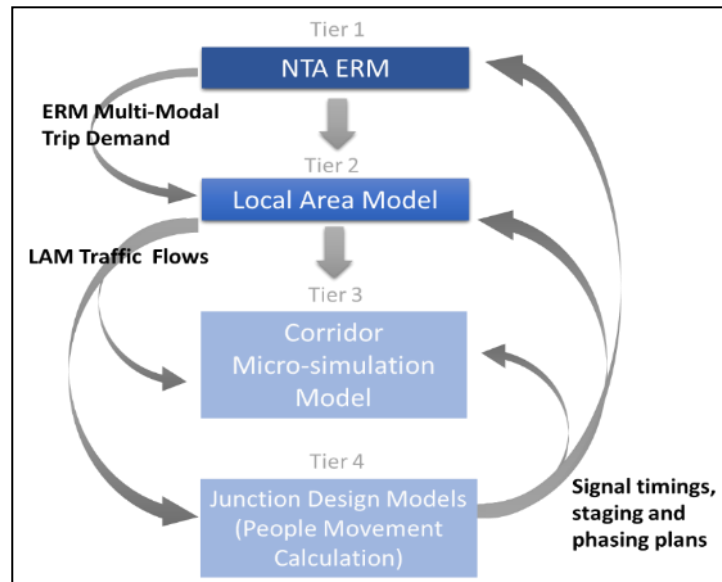
Figure 2-1: Junction Type

In addition to the evolution of the design principles, the design has been positively influenced through engagement with the public at various points in the process. The evolution of the design is documented in this report with a clear rationale provided for the changes at key points in the project as follows:

- Emerging Preferred Routes (EPR);
- Second Public Consultation (PC2);
- Third Public Consultation (PC3); and
- Final Proposed Scheme.

## 2.2 Transport Modelling

Transport modelling has been a key input to the scheme design throughout the project. Given the complexity of the scheme proposals and changes to existing traffic regimes, the design went through an iterative process which was incorporated in the multi-tiered transport modelling approach consisting of strategic, local, and microsimulation modelling. The overall modelling methodology and information flow is summarised in *Figure 2-2*.



**Figure 2-2: Proposed Scheme Traffic Modelling Hierarchy**

As shown in *Figure 2-2*, there are four tiers in the transport modelling hierarchy that were used for the purposes of assessing the Proposed Scheme:

- East Regional Model (ERM): the primary tool that provides the strategic multi-modal demand outputs for the proposed forecast.
- Local Area Model (LAM): a more refined road network model used to provide consistent road-based outputs to inform the TIA, EIAR, microsimulation model, junction design models and traffic management plan testing.
- Microsimulation Model: represents the end-to-end corridor model Proposed Scheme to assist in the operational validation of proposed designs with the visualisation of the potential Proposed Scheme impacts and benefits.
- Local Junction Models: each junction along the Proposed Scheme were developed to support local junction design development.

For the purposes of the Junction Design Report (JDR), results from the local junction models were extracted, which used LinSig, an industry-standard software that provides comprehensive assessment and design of a junction or a network of junctions.

The local junction models were used to inform junction design considerations and ‘proof of concept’ demonstration of the Proposed Scheme. The signal staging, timing and phasing from LinSig were incorporated into the three tiers of transport modelling hierarchy and it should be noted that this was an iterative approach throughout the design process.

This report presents the results of the local junction modelling which was the primary tool used by the design team to design and refine junction layouts. The 2028 scenario modelling results are presented in this report which represent an assessment of the junction designs for the opening year.

Figure 2-3 presents an example of the local junction modelling results from LinSig presented in this report. A description of the images follows.

A shows the junction layout in LinSig and the results per lane, which are the following:

- 
- Average Delay per PCU (sec) – this is the number located at the back of the lane in Figure 3 and is the average delay for each PCU per lane;
  - Degree of Saturation (%) – this is the number located in the middle of the lane in Figure 3 and is the ratio of Flow to Capacity per lane. The theoretical capacity of a junction is 90% and anything less than this assumes that the junction is within capacity; and
  - Mean Max Queue (PCU) – this is the number located at the front of the lane in Figure 3 and is maximum queue (per lane) within a typical cycle.

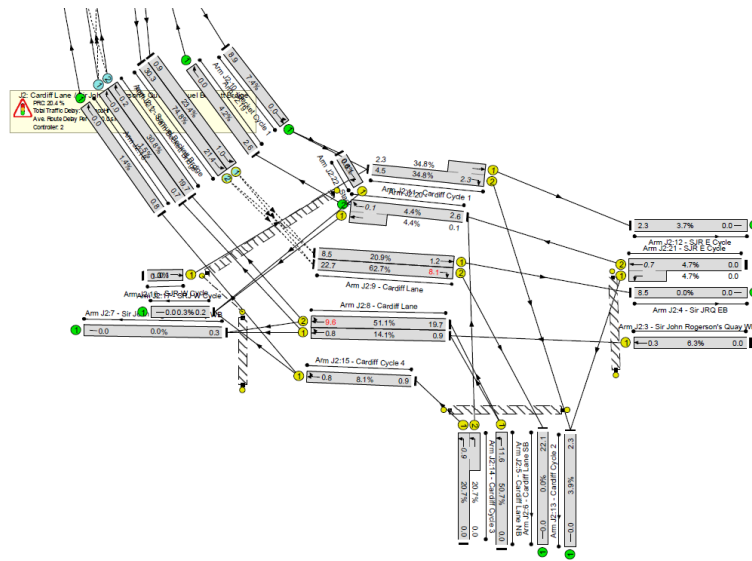
**B** is the Timing Dial that shows an overview of signal times for all Stage Streams.

**C** is the Stage Diagram that shows the staging, phasing and timings of the junction.

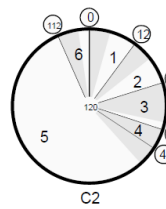
**D** shows the following Network Summary Results:

- Cycle (seconds) – Cycle time in seconds;
- PRC (%) – Practical Reserve Capacity, which is the available spare capacity at a junction (i.e. negative PRC = over-capacity; positive PRC = spare capacity);
- Delay (PCUhr) – the total aggregate delay on all lanes controlled by each Stage Stream; and
- Bus delay (PCUhr) – the average bus delay per direction on the Proposed Scheme per junction.

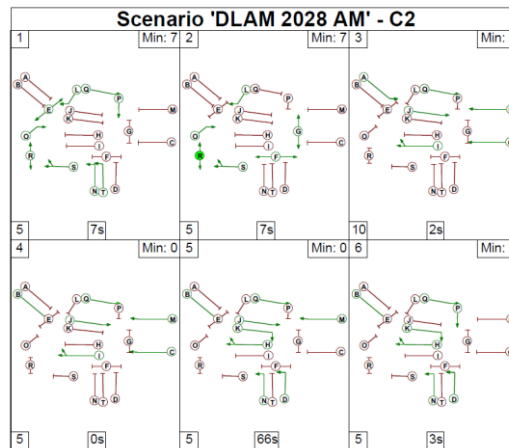
A



B



C



D

Cycle = 120secs	Bus Delay
PRC = -2.3%	Inbound = 68s
Delay = 19pcuHr	Outbound = 73s

Figure 2-3 Example of the local junction modelling results in the JDR



It should be noted that modelling bus priority signals is not possible in LinSig due to its dynamic nature. However, this was modelled in the microsimulation model and is reported in the Transport Impact Assessment Report and Transport Modelling Report.

## 2.3 People Movement at Signals Calculator

The prioritisation of people movement and maximising the throughput of sustainable modes (i.e. walking, cycling and bus modes) in advance of the consideration and management of general vehicular traffic (private car) movements at junctions were the policy led approach to the junction design for the Proposed Scheme. Therefore, in order to quantify this for the purposes of supporting this policy led approach, the People Movement at Signals (PMS) Calculator was developed. The PMS Calculator was used to validate the design and the assertion that the proposal would result in greater throughput of people.

The PMS Calculator provided an initial estimate of green time allocation for all movements at a 'typical' junction on the basis that sustainable mode movements should be accommodated foremost to maximise people movement, with the remaining green time allocated to general traffic movements. The PMS calculator was also set up to cater for the four junction types as proposed in the BusConnects Preliminary Design Guidance Booklet.

The information used for the purposes of PMS Calculator include the following:

- Number of buses required to be accommodated along the corridor (informed from the network re-design proposals);
- Estimated cycling demand (from early stage runs of the ERM);
- Pedestrian crossing width and resultant crossing timing requirements; and
- Vehicular capacity at each junction (derived by LinSig).

The bus demand and vehicular capacity per hour were converted to number of persons in order to calculate the total number of people (including pedestrians and cyclists) that can be accommodated at each junction in the Proposed Scheme per hour.

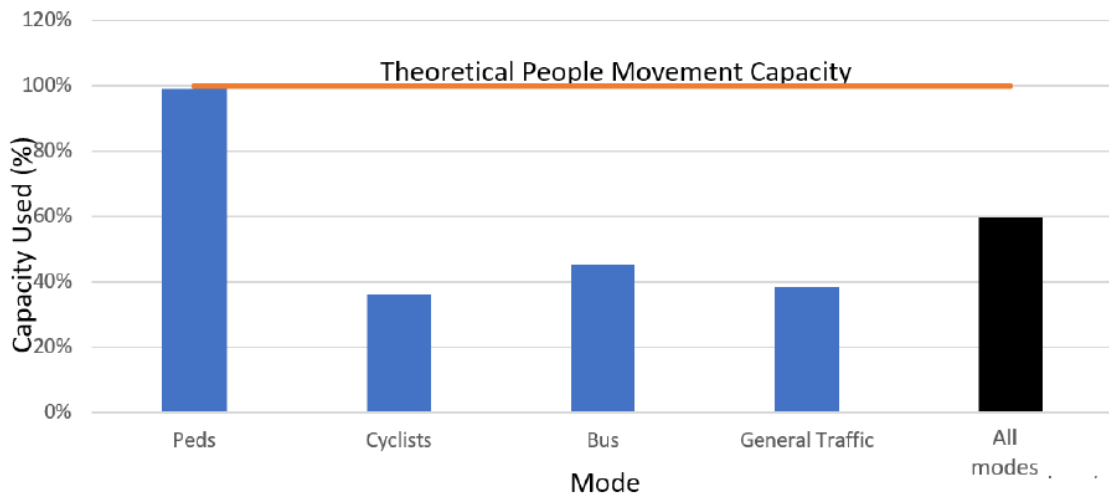
It should be noted that the PMS Calculator is based on theoretical capacity of the design and would generally be different from the local junction modelling results in LinSig, which is based on operational capacity or Practical Reserve Capacity (PRC) and future transport demands. Therefore the PMS Calculator results are shown in the JDR, in tandem with the LinSig results, to display both the movement of people (relative to the available capacity) and vehicles along the Proposed Scheme.

Additionally, the vehicular capacity per arm for each junction (as marked in the image below) is the capacity calculated in LinSig, which factors in parameters such as geometry and red time. Therefore, the vehicular capacity is dependent on each junction design. These vehicular capacities were directly extracted from LinSig for each traffic lane of all junctions and applied in the PMS Calculator.

The vehicular capacities were then converted to number of people using an assumed occupancy factor of 1.2 per vehicle.

Therefore, the percentage displayed in the Junction Design Report for General Traffic is the volume/capacity of people per junction. It should be noted that the capacity used for general traffic is based on the total volume and capacity for the junction overall (i.e. total of all arms) and therefore does not directly reflect the PRC results in LinSig, which reflects the maximum degree of saturation on the worst lane.

Below is an example image of PMS Calculator results, which shows the capacity used by mode (**blue**), as well as the combined capacity used for all modes (**black**).



**Figure 2-4 Example image of People Movement at Signals Calculator results**

Each junction has a certain theoretical capacity for each mode based on green time and has been examined as to how this green time can cater for the anticipated demand through the junction. In the scenario described within Figure 2-4, due to high pedestrian volumes the junction has reached its theoretical capacity for pedestrians, as no additional green time can be applied to pedestrian phases. However, it is also the case in this example scenario that the volumes of cyclists, buses, and general traffic are below the theoretical capacity. As such, if there were an increased demand for any or all of these modes the junction could continue to cater for such a demand (up to the theoretical capacity for the relevant mode and/or the overall theoretical capacity for all modes).

---

## 3 Junctions Assessed

A total number of 12 junctions in the Proposed Scheme are presented in this report, which are as follows:

- Commons Street / Custom House Quay
- Guild Street / North Wall Quay / Beckett Bridge
- Park Lane / North Wall Quay
- New Wapping St / North Wall Quay
- Castleforbes Road / North Wall Quay
- North Wall Avenue / North Wall Quay
- Lombard Street / City Quay
- Cardiff Lane / Sir John Rogerson's Quay / Beckett Bridge
- Forbes Street / Sir John Rogerson's Quay
- Blood Stoney Road / Sir John Rogerson's Quay
- Dodder PT Bridge / East Link Road
- Memorial road / Custom House / Talbot Bridge

The junctions design and modelling commentary and results are presented in similar order as above in the next section.

## **4 Junction Design and Modelling Results**

# Contents

Subject: BusConnects Core Bus Corridors Junction Design Rationale  
Date: July 2021  
Route: Ballsbridge/Blackrock to City Centre CBC Scheme Job No/Ref: 268401/00

**Ballsbridge 01: Baggot Street Lower / Fitzwilliam Street Upper**

**EXISTING**

**EPR**

**DRAFT PRO (PC2)**

**DRAFT PRO (PC3)**

**ARUP**

**Summary**  
Junction is in compliance with the BusConnects Preliminary Design Guidance Booklet with respect to pedestrian, cyclist and bus. The number of general traffic lanes and on-street parking has been reduced to improve the environment for pedestrians and cyclists as well as providing bus priority on the NS and SE arms. Buses turning right from left hand lane onto Fitzwilliam Street through Bus Priority Signalling. The car set of the proposed bus lane on Fitzwilliam Street Lower is curtailed due to constrained existing cross section. Design options were to improve cyclist facilities at the junction and to provide priority for buses to turn right from Baggot Street Lower to Fitzwilliam Street.

**Signal Operation**  
A no-typical signal operation is proposed. Buses from Baggot Street Lower (E) and Fitzwilliam Street Lower (W) operate in a single stage. Traffic and cyclist from each arm operate in separate stages, with left turning traffic giving way to cyclists on leading amber. Pedestrian crossings operate in their own stage.  
Operation type A. Bus delay < 80S

Change Made	Reason for Change	Impact of Change
1. Bus lanes and cycle infrastructure introduced on Baggot Street Lower northbound approach. 2. Cycling infrastructure introduced on Fitzwilliam Street arms with amendments to on street parking.	1. In keeping with developing BusConnects design principles. 2. To align with developing Fitzwilliam Cycle Route proposals.	1. Reallocation of foot space to buses and cyclists will improve bus reliability and cyclist environment. 2. Reduction in parking.
1. Proposed Junction for Cyclist introduced. 2. Bus lane and general traffic lane on northbound approach proceeded to create bus reservation for cyclist. 3. Fitzwilliam Street (NS) lanes were widened to reflect BusConnects requirements. 4. Right turning cycle lane on Fitzwilliam Street Lower. 5. Right turning Bus from left hand bus lane introduced.	1. Align Junction in line with BusConnects Preliminary Design Guidance Booklet principles and to improve cyclist facilities at the junction. 2. To enable the construction of bus reservation on Fitzwilliam Street. 3. To align Junction in line with BusConnects Preliminary Design Guidance Booklet principles of reserved cycle lanes. 4. To provide a dedicated cycle lane for right turning cyclists. 5. To provide a dedicated cycle lane for right turning cyclists. 6. To provide a dedicated cycle lane for right turning cyclists.	1. Improved cyclist facilities. 2. Bus required to reserve general traffic lane. 3. All parking removed on site. 4. Bus to share general lane over short distance, however pedestrian crossings can be retained. 5. Reduction in construction works and disruption to existing environment.
1. Right turning Bus from left hand bus lane introduced.	1. To provide priority for buses to turn right from Baggot Street Lower to Fitzwilliam Street.	1. Bus no longer required to reserve general traffic lane. Baggot Street traffic has opportunity to be retained at junction.

## Description of Options

- Summary
- EPR
- Draft PRO PC2
- Draft PRO PC3

Subject: BusConnects Core Bus Corridors Junction Design Rationale  
Date: July 2021  
Route: Ballsbridge/Blackrock to City Centre CBC Scheme Job No/Ref: 268401/00

**Ballsbridge 01: Baggot Street Lower / Fitzwilliam Street Upper**

**EXISTING**

**STAGE B REVIEW (WIP)**

**FINAL DRAFT JULY 2021 (WIP)**

**ARUP**

**Projected Operational Performance: LAM Delay (s)**

Node	DS		DM		DS		Difference (s)	Relative Diff. (%)	Rank
	AM	PM	AM	PM	AM	PM			
6153	6153	68.13	68.13	54.23	370.53	82.26	49.4	100%	576

Change Made	Reason for Change	Impact of Change
1. Approach and signal alignment of cycle tracks introduced to allow for bus lanes and right turning cycle lanes. 2. Cycle facilities extended on Baggot Street Lower and Fitzwilliam Street Lower, including protected waiting area for cyclists to allow for general traffic lane on Baggot Street Lower. 3. Additional details considered on Fitzwilliam Street Lower. 4. Cycle time extended to 120 seconds to improve junction performance. 5. Peak bus green time extended from 6 seconds to 11 seconds.	1. To provide optimum route through and around the junction for cyclists. To ensure cyclist safety and to improve cyclist environment. 2. To align with developing BusConnects design principles and to improve cyclist facilities at the junction. 3. To provide a dedicated cycle lane for right turning cyclists. 4. Cycle time extended to 120 seconds to improve junction performance. 5. Peak bus green time extended from 6 seconds to 11 seconds.	1. Improved cyclist facilities with protected waiting area and opportunity to cross tracks. Further details were provided with detailed narrowing of cycle tracks where protected and consistent to be provided with design. 2. Additional markings and signage to be provided with design. 3. Additional markings and signage to be provided with design. 4. Improved cycle time improves capacity at junction and ensures more time for pedestrians to cross.
1. Cycle lane on Fitzwilliam St. Curved to create a gap. 2. The LAMS analysis has been updated to reflect width of the individual cycle lanes to be retained within the junction.	1. To facilitate easier access to the cycle track for cyclists who may have passed through the junction using the bus lane.	1. Improved access to the cycle track.

## Description of Options cond.

- Interim Design Development (where relevant)
- Stage B Review
- Final Draft (Work In Progress)

Subject: BusConnects Core Bus Corridors Junction Design Rationale  
Date: July 2021  
Route: Ballsbridge/Blackrock to City Centre CBC Scheme Job No/Ref: 268401/00

**Ballsbridge 01: Baggot Street Lower / Fitzwilliam Street Upper**

**Capacity / Delay**  
1. Junction operates over capacity in the AM peak only.  
2. Requires more signalisation according to fully assess capacity, cycle crossings, and bus delay.

**People Movement Calculator - Capacity**

Do Something : 2028 : AM

Do Something : 2028 : PM

**ARUP**

**Capacity / Delay**  
1. Junction operates over capacity in the AM peak only.  
2. Requires more signalisation according to fully assess capacity, cycle crossings, and bus delay.

**People Movement Calculator - Capacity**

Do Something : 2028 : AM

Do Something : 2028 : PM

**ARUP**

## LinSig Outputs and People Movement Calculator

- People Movement Calculator
- Flow Diagrams
- LinSig Results

Subject	BusConnects Core Bus Corridors Junction Design Rationale		
Date	May 2022		
Route	Ringsend to City Centre Scheme	Job No/Ref	19.117

## Commons Street/Custom House Quay

### Summary

Junction is in compliance with the BusConnects Preliminary Design Guidance Booklet with respect to pedestrians, cyclists and buses.

Layout of junction updated introducing protected cycle infrastructure and new Bus lane infrastructure in the eastbound and westbound direction.

The design rationale is to provide more priority to buses, enable bus priority signalling, and to improve pedestrian and cyclist safety.

### Signal Operation

A five stage signal operation is proposed.

Bus priority signal for right turning buses and Signal controlled priority.

Pedestrian crossings operate in their own stage.



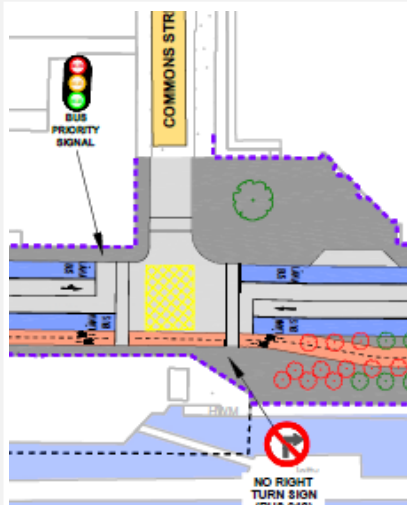
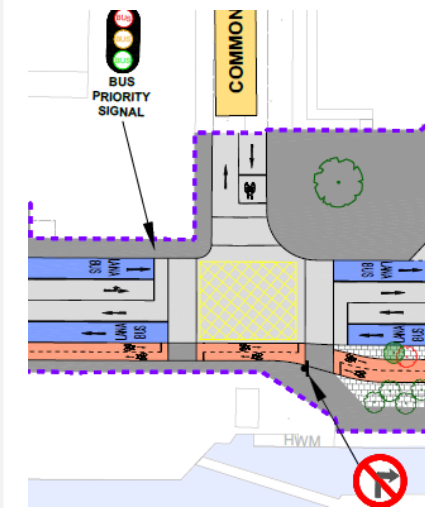
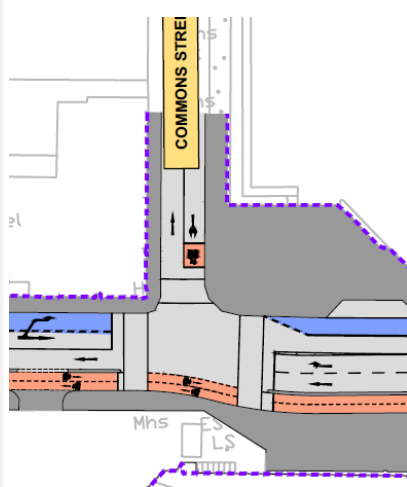
Change Made	Reason for Change	Impact of Change
<ol style="list-style-type: none"> <li>Two-way cycle track introduced on the quay side.</li> <li>Removal of outbound advisory cycle lane</li> <li>ASL provided on Commons Street</li> <li>Widened pedestrian crossings</li> </ol>	<ol style="list-style-type: none"> <li>To provide continuous cycle infrastructure.</li> <li>Allows outbound bus lane to develop</li> <li>To provide a stacking space for cyclists from Commons Street.</li> <li>To improve pedestrian crossing capacity.</li> </ol>	<ol style="list-style-type: none"> <li>Improved cycle infrastructure along the north quays in both directions</li> <li>Improved bus priority in the outbound direction</li> <li>Improved cycle infrastructure.</li> <li>Improved pedestrian facilities</li> </ol>
<ol style="list-style-type: none"> <li>Inbound bus lanes introduced.</li> <li>Right turn lane removed and right turn general traffic ban introduced</li> <li>Left turn manoeuvres to be made from the general traffic lane</li> </ol>	<ol style="list-style-type: none"> <li>To provide inbound bus infrastructure on the north quays</li> <li>To provide dedicated bus lane infrastructure</li> <li>To provide dedicated bus lane infrastructure.</li> </ol>	<ol style="list-style-type: none"> <li>Footpath narrowed on south side</li> <li>Improved bus priority in the inbound direction</li> <li>Improved bus priority in the outbound direction</li> </ol>
<ol style="list-style-type: none"> <li>Commons Street stop line reverted to existing location</li> </ol>	<ol style="list-style-type: none"> <li>Left turning buses require the stop line to be set back to accommodate the overswing</li> </ol>	<ol style="list-style-type: none"> <li>Facilitates left turning buses</li> </ol>

EXISTING

EPR

DRAFT PRO (PC2)

DRAFT PRO (PC3)



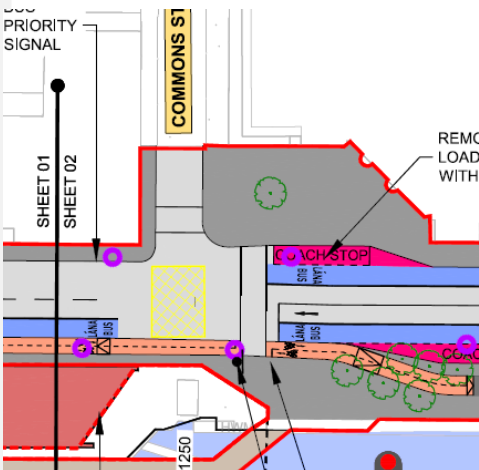
Subject	BusConnects Core Bus Corridors Junction Design Rationale		
Date	May 2022		
Route	Ringsend to City Centre Scheme	Job No/Ref	19.117

Commons Street/Custom House Quay

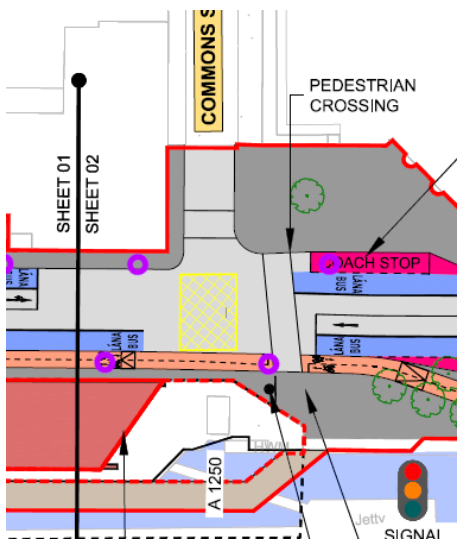
EXISTING



STAGE B REVIEW



FINAL DRAFT (WIP)

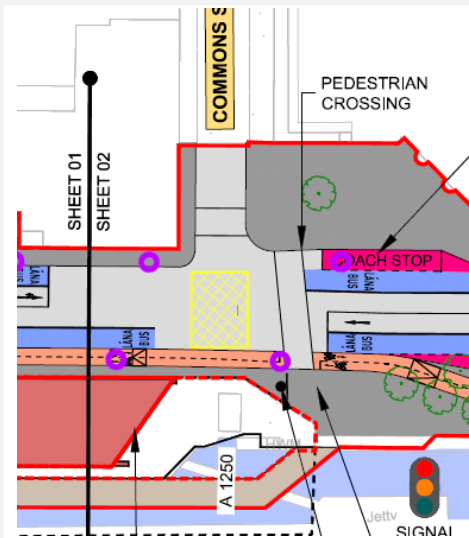


Change Made	Reason for Change	Impact of Change
<ol style="list-style-type: none"> <li>1. Coach stop added in both directions</li> <li>2. Boardwalk provided around existing building</li> <li>3. Outbound bus and general traffic stop lines set back</li> <li>4. Western arm pedestrian crossing removed</li> </ol>	<ol style="list-style-type: none"> <li>1. To continue to accommodate services as existing</li> <li>2. To overcome the pedestrian footpath constraint created adjacent to the building</li> <li>3. To better accommodate left turning buses from the bus lane</li> <li>4. Insufficient room for waiting pedestrians who may overflow onto the cycle track</li> </ol>	<ol style="list-style-type: none"> <li>1. Coach services retained</li> <li>2. Improved pedestrian facilities</li> <li>3. Improved priority and for left turning buses</li> <li>4. Removal of potential conflict between cyclists and pedestrian</li> </ol>
<ol style="list-style-type: none"> <li>1. Eastern arm north-south pedestrian crossing realigned</li> <li>2. Eastbound stop line adjusted closer to the junction</li> </ol>	<ol style="list-style-type: none"> <li>1. To provide sufficient set back from coach stop</li> <li>2. Staging plan modified to accommodate better left turning manoeuvres.</li> </ol>	<ol style="list-style-type: none"> <li>1. Improved intervisibility for pedestrians.</li> <li>2. Decreased intergreen time to accommodate the manoeuvre.</li> </ol>

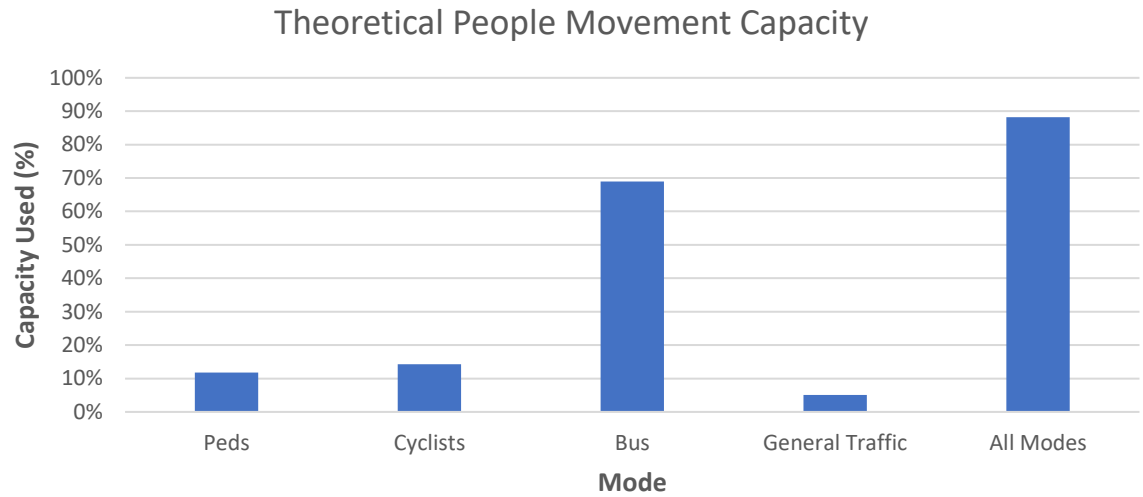
Subject	BusConnects Core Bus Corridors Junction Design Rationale		
Date	May 2022		
Route	Ringsend to City Centre Scheme	Job No/Ref	19.117

### Commons Street/Custom House Quay

### Capacity / Delay



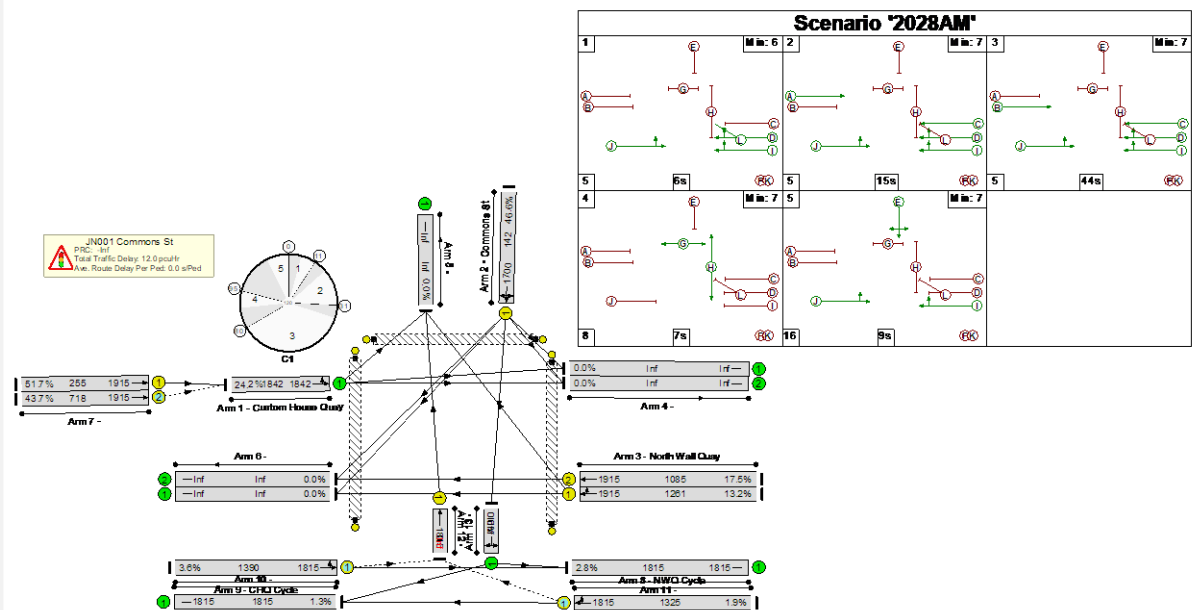
### People Movement Calculator – Capacity



### Do Something : 2028 : AM

Cycle = 120secs  
 PRC = 74.1%  
 Delay = 8pcuHr

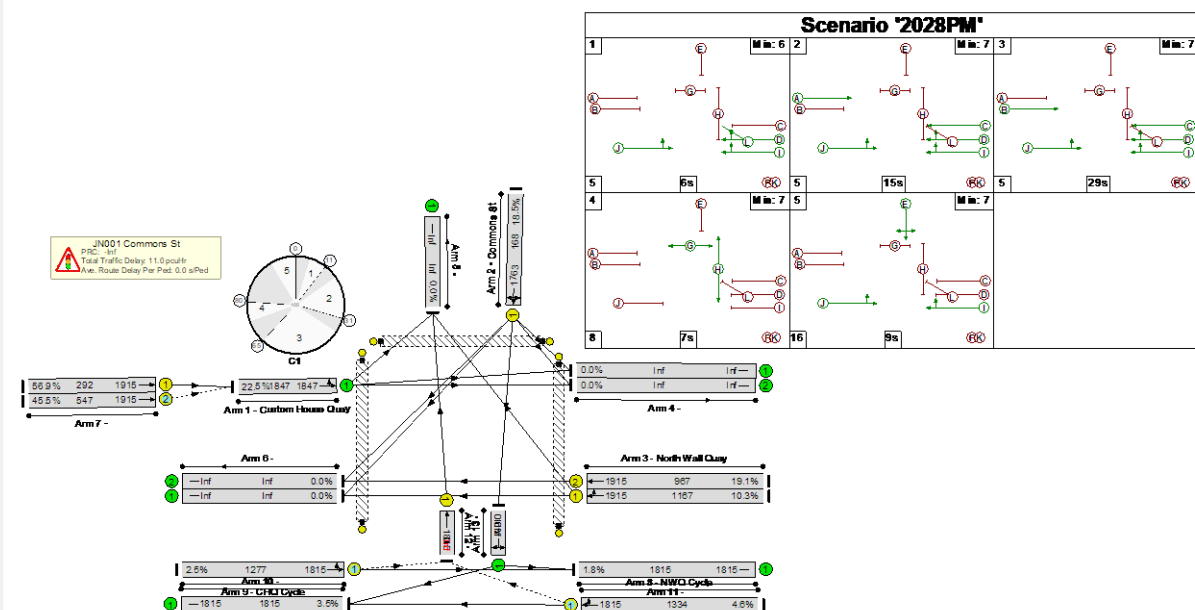
Bus Delay  
 Inbound = 9s  
 Outbound = 63s



### Do Something : 2028 : PM

Cycle = 105secs  
 PRC = 58.2%  
 Delay = 7pcuHr

Bus Delay  
 Inbound = 10s  
 Outbound = 56s





Subject	BusConnects Core Bus Corridors Junction Design Rationale		
Date	May 2022		
Route	Ringsend to City Centre Scheme	Job No/Ref	19.117

Guild Street/North Wall Quay

**Summary**

Junction is in compliance with the BusConnects Preliminary Design Guidance Booklet with respect to pedestrians, cyclists and buses.

Layout of junction updated introducing protected cycle infrastructure and new Bus lane infrastructure in the eastbound and westbound direction and improving approach and egress alignments.

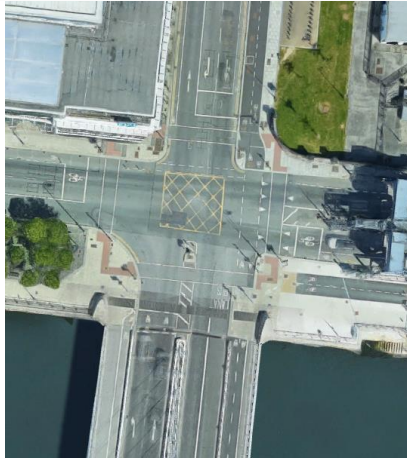
The design rationale is to provide more priority to buses, enable bus priority signalling, and to improve pedestrian and cyclist safety.

**Signal Operation**

A seven stage signal operation.

Bus Priority Signal for right turning buses

Pedestrian crossings operate in their own stage.

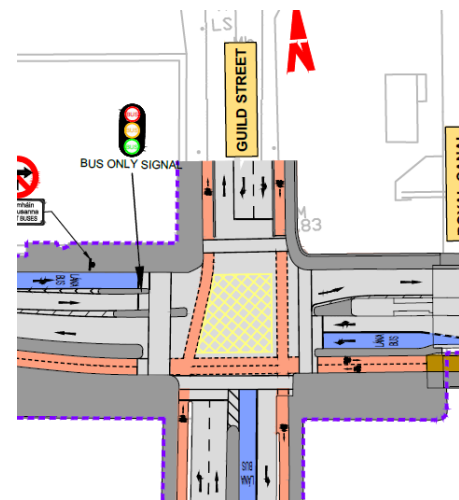


Change Made	Reason for Change	Impact of Change
-------------	-------------------	------------------

1. Two-way cycle track continued in the east west direction.
2. Bus gate introduced for outbound buses
3. Left turning Bus lane developed on eastern arm
4. Southbound lane reorientation on Samuel Beckett Bridge
5. Northbound cycle track removed from eastern north-south movement

1. To provide continuous cycle infrastructure.
2. To improve bus priority.
3. To improve bus priority.
4. To accommodate bus oversweeping movements
5. To provide wider footpaths.

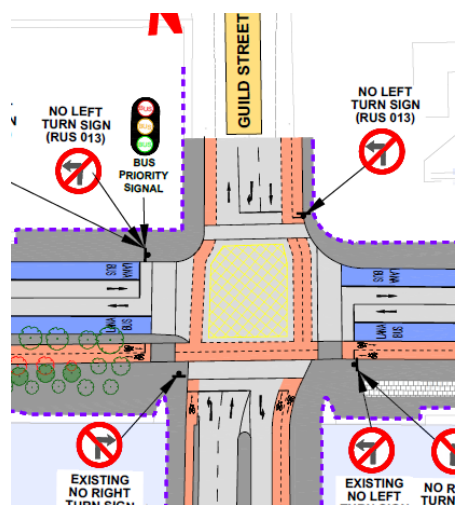
1. Improved cycle facilities along the north quays in both directions
2. Improved outbound bus provision.
3. Improved southbound bus provision but cycle lane and ASL removed.
4. Improved southbound bus provision.
5. Reduced quality of cycle infrastructure along Royal Canal Greenway route



1. Scherzer bridges relocated and two-way bus lanes introduced
2. Two-way north-south cycle track reinstated
3. Left turn bans introduced on three arms.
4. Southbound arm of Samuel Beckett Bridge reduced to one lane
5. No shared bus lanes
6. Widened pedestrian crossings

1. To increase the road carriageway width and provide uninterrupted bus infrastructure.
2. To maintain a high quality cycle along the Royal Canal Greenway
3. To maintain capacity of this critical junction
4. To improve the pedestrian facilities on the east side of the bridge
5. To improve bus priority.
6. To improve pedestrian facilities

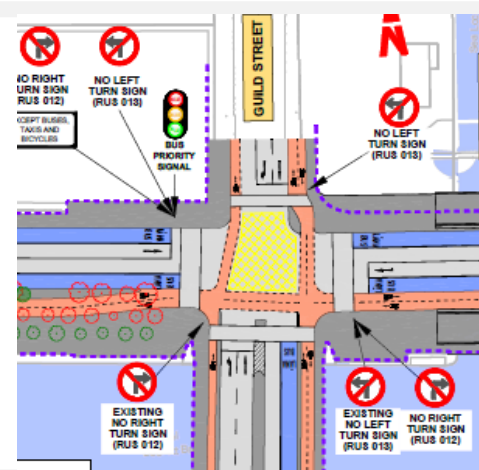
1. Improved bus provision along the north quays and improve capacity at the junction
2. Existing high quality cycle infrastructure maintained
3. Sufficient volumes of traffic can be accommodated by the new staging plans
4. Reduced southbound capacity across the bridge
5. Dedicated bus stop to the stop line provided
6. Improve pedestrian facilities



1. Protected cycle infrastructure introduced
2. Bus lane reintroduced southbound across the bridge

1. To improve the safety and segregation of the cyclists through the junction
2. Bus infrastructure required to maintain priority for west to south bus route

1. Improved cycle safety and segregation through the junction
2. Bus infrastructure reinstated and capacity restored across the bridge



EXISTING

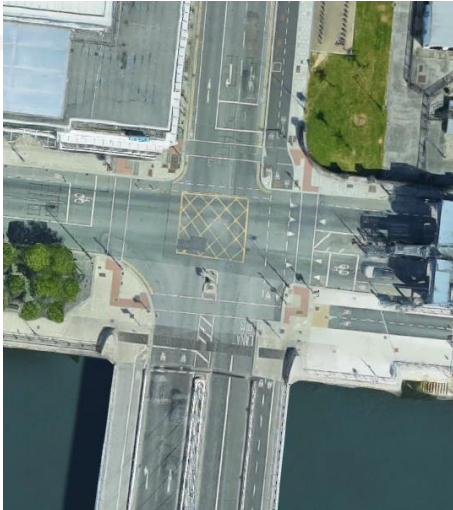
EPR

DRAFT PRO (PC2)

DRAFT PRO (PC3)

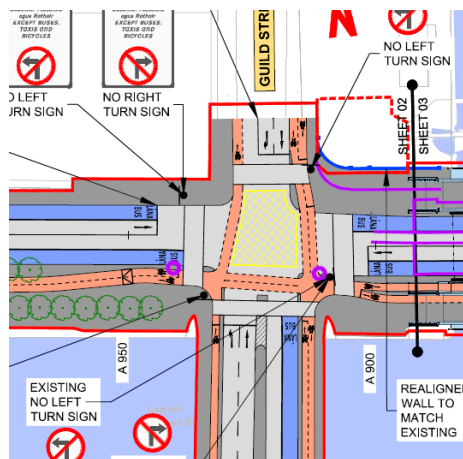
Subject	BusConnects Core Bus Corridors Junction Design Rationale		
Date	May 2022		
Route	Ringsend to City Centre Scheme	Job No/Ref	19.117

## Guild Street/North Wall Quay

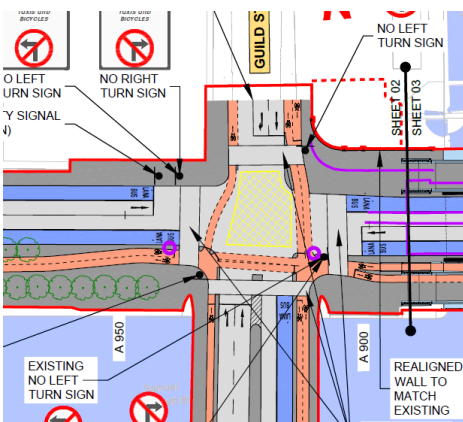


EXISTING

STAGE B REVIEW



FINAL DRAFT

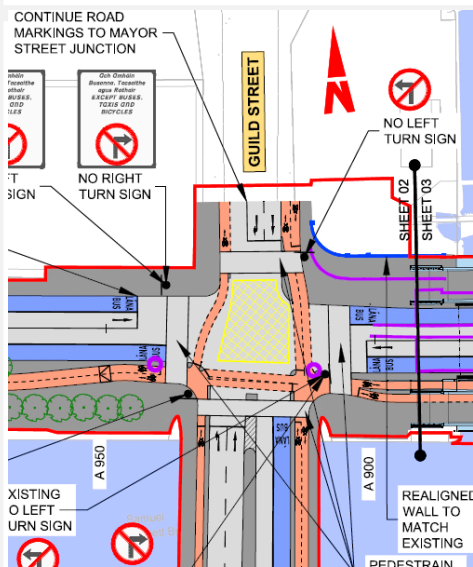


Change Made	Reason for Change	Impact of Change
<ol style="list-style-type: none"> <li>Improved protected cycle infrastructure</li> <li>Pedestrian crossings further widened where possible</li> <li>Two-way cycle track alignment modified</li> </ol>	<ol style="list-style-type: none"> <li>To improve the safety and segregation of the cyclists through the junction</li> <li>To improve pedestrian provision</li> <li>A better understanding of the space requirements for the relocated Scherzer bridges</li> </ol>	<ol style="list-style-type: none"> <li>Improved cycle safety and segregation through the junction</li> <li>Improved pedestrian provision</li> <li>Improved space for Scherzer bridges in their new locations</li> </ol>
<ol style="list-style-type: none"> <li>None</li> </ol>	<ol style="list-style-type: none"> <li>None</li> </ol>	<ol style="list-style-type: none"> <li>None</li> </ol>

Subject	BusConnects Core Bus Corridors Junction Design Rationale		
Date	May 2022		
Route	Ringsend to City Centre Scheme	Job No/Ref	19.117

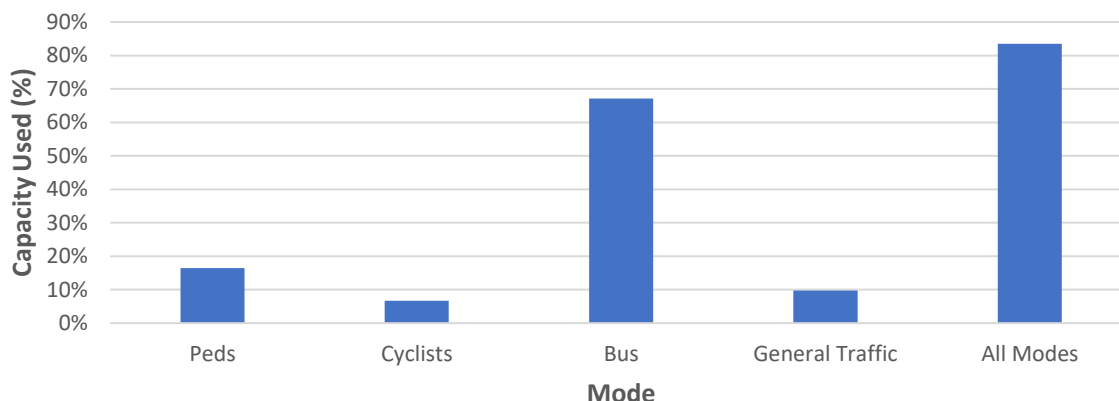
## Guild Street/North Wall Quay

### Capacity / Delay



### People Movement Calculator – Capacity

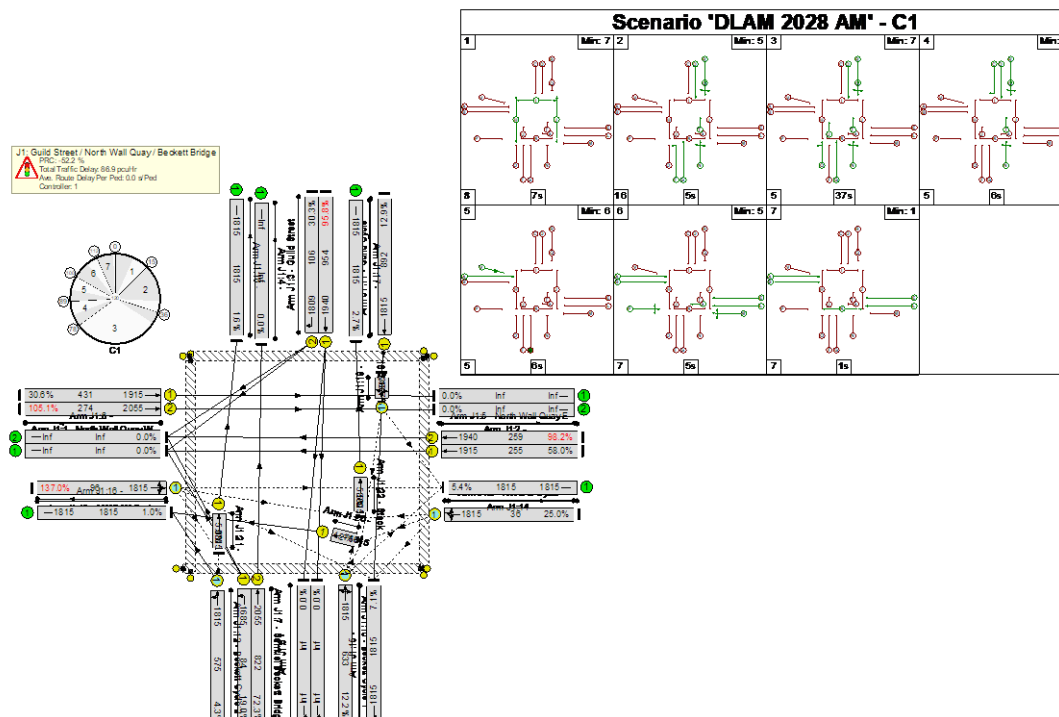
Theoretical People Movement Capacity



### Do Something : 2028 : AM

Cycle = 120secs  
 PRC = -52.2%  
 Delay = 87pcuHr

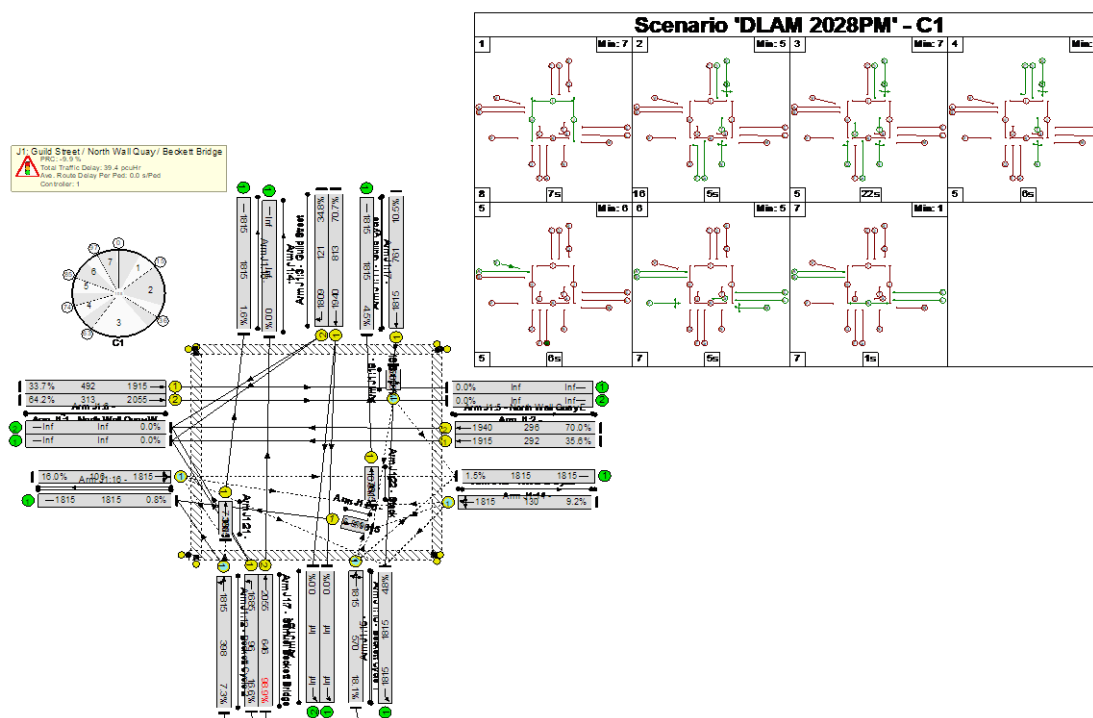
Bus Delay  
 Inbound = 65s  
 Outbound = 45s



### Do Something : 2028 : PM

Cycle = 105secs  
 PRC = -9.9%  
 Delay = 39pcuHr

Bus Delay  
 Inbound = 37s  
 Outbound = 49s



Subject	BusConnects Core Bus Corridors Junction Design Rationale		
Date	May 2022		
Route	Ringsend to City Centre Scheme	Job No/Ref	19.117

## Park Lane/North Wall Quay

### Summary

Junction is in compliance with the BusConnects Preliminary Design Guidance Booklet with respect to pedestrians, cyclists and buses.

Layout of junction updated introducing protected cycle infrastructure and removing on street parking to include new Bus lane infrastructure.

The design rationale is to provide more priority to buses, enable bus priority signalling, and to improve pedestrian and cyclist safety.

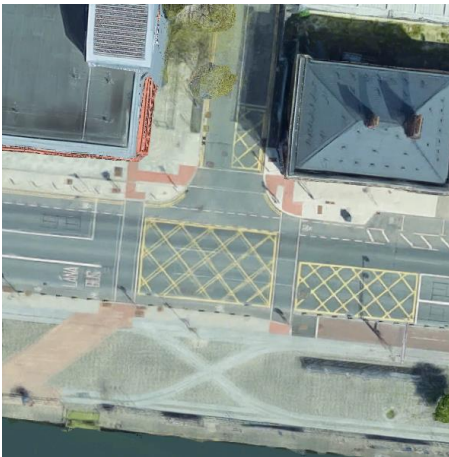
### Signal Operation

A six stage signal operation.

Bus priority signal for right turning buses

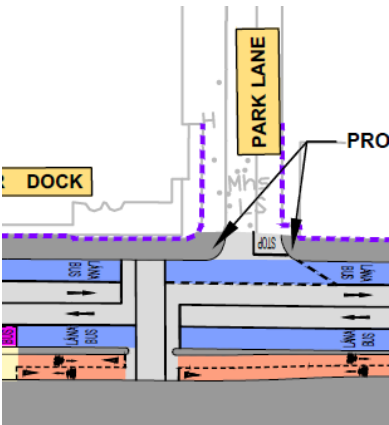
Pedestrian crossings operate in their own stage.

EXISTING



Change Made	Reason for Change	Impact of Change
-------------	-------------------	------------------

EPR

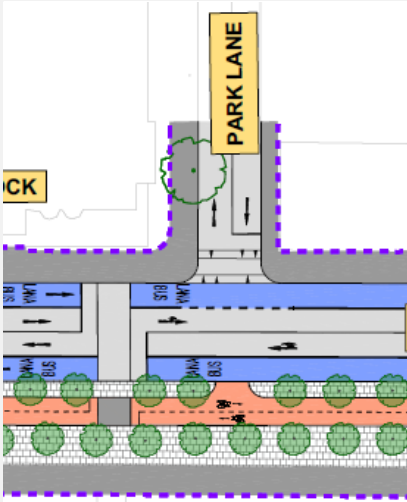


1. Two-way continuous cycle track introduced on the southern side.
2. Outbound bus lane infrastructure introduced
3. Signalised junction removed
4. Pedestrian crossing provided

1. To provide continuous cycle infrastructure.
2. To improve the bus priority infrastructure along the bus corridor
3. To improve traffic throughput along the north quays
4. To ensure pedestrian crossing ability is maintained

1. Improved cycle facilities along the north quays
2. Outbound cycle lane and on-street parking removed.
3. Controlled pedestrian crossing removed and junction capacity impacted
4. Ensures continuation of pedestrian crossing opportunity

DRAFT PRO (PC2)

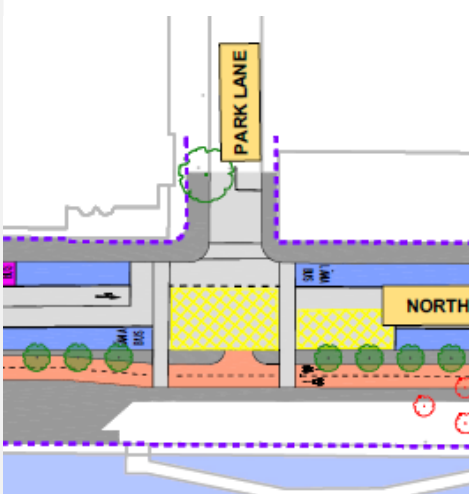


1. Raised pedestrian platform provided across Park Lane arm
2. Access provided for cyclists on the two-way cycle track to and from Park Lane
3. Tree landscaping included

1. To improve pedestrian crossing priority across the Park Lane arm
2. To improve interconnectivity between radial and orbital cycle infrastructure
3. To ensure segregation between cyclists and pedestrians

1. Better pedestrian safety and priority across the junction
2. Direct access provided for cyclists to and from Park Lane
3. Improved visual amenity and character of the campshires

DRAFT PRO (PC3)



1. Reduced landscaping
2. Junction control reintroduced
3. Controlled crossings across cycle track

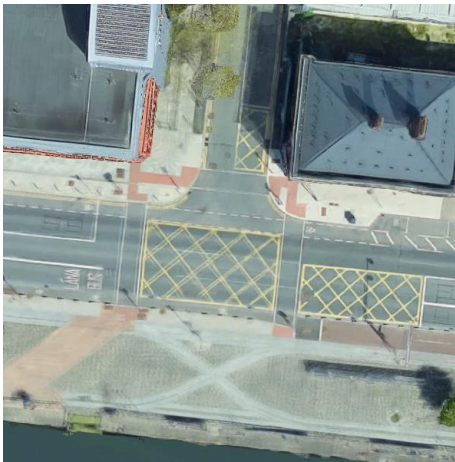
1. Taking into consideration separate plans for the Liffey Campshires
2. To ensure safe movements for cyclists to and from Park Lane
3. To ensure pedestrian priority across the cycle tracks

1. Reduced landscaping and footpath adjacent to the cycle track
2. Dedicated crossing phase introduced for radial cyclists and controlled pedestrian crossing across all arms of the junction
3. Increased pedestrian intergreen times and reduced operational capacity of the junction

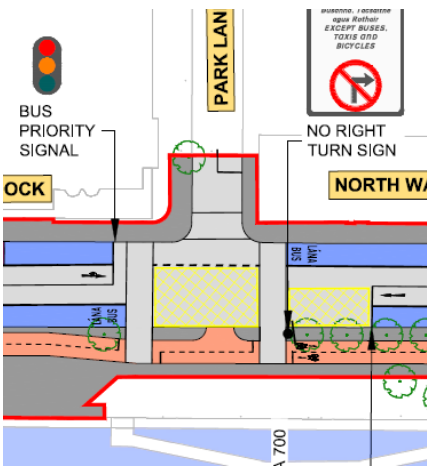
Subject	BusConnects Core Bus Corridors Junction Design Rationale		
Date	May 2022		
Route	Ringsend to City Centre Scheme	Job No/Ref	19.117

Park Lane/North Wall Quay

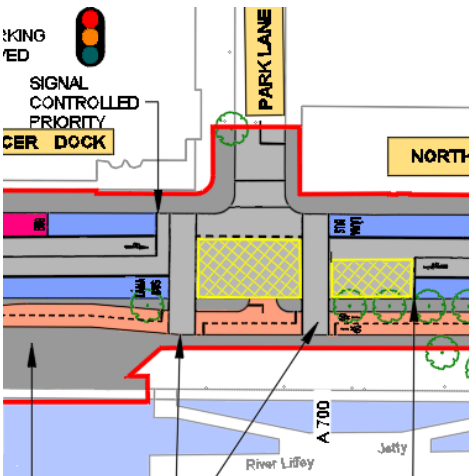
EXISTING



STAGE B REVIEW



FINAL DRAFT

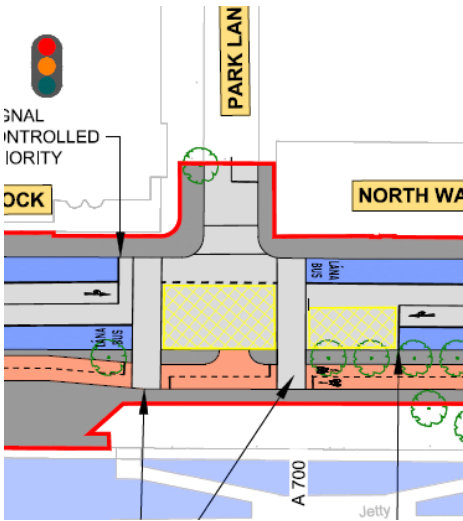


Change Made	Reason for Change	Impact of Change
<ol style="list-style-type: none"> <li>Pedestrian crossings widened</li> <li>Right turn ban eastern arm.</li> </ol>	<ol style="list-style-type: none"> <li>To improve the pedestrian facilities at the junction</li> <li>To improve the capacity of the junction</li> </ol>	<ol style="list-style-type: none"> <li>Improved pedestrian infrastructure</li> <li>Restricted access for Park Lane residents</li> </ol>
<ol style="list-style-type: none"> <li>Right turn provision reinstated</li> </ol>	<ol style="list-style-type: none"> <li>Impact to access for Park Lane residents</li> </ol>	<ol style="list-style-type: none"> <li>Access for Park Lane residents reinstated</li> </ol>

Subject	BusConnects Core Bus Corridors Junction Design Rationale		
Date	May 2022		
Route	Ringsend to City Centre Scheme	Job No/Ref	19.117

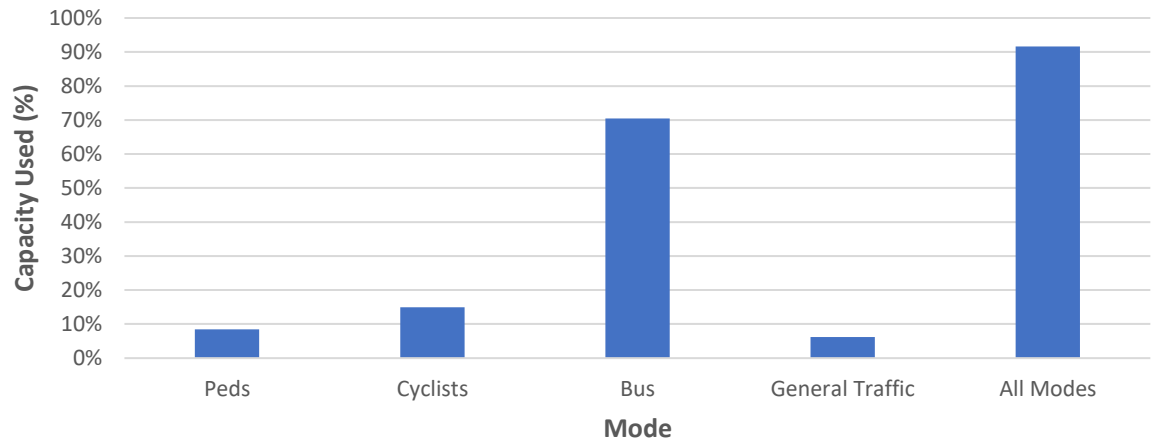
### Park Lane/North Wall Quay

### Capacity / Delay



### People Movement Calculator – Capacity

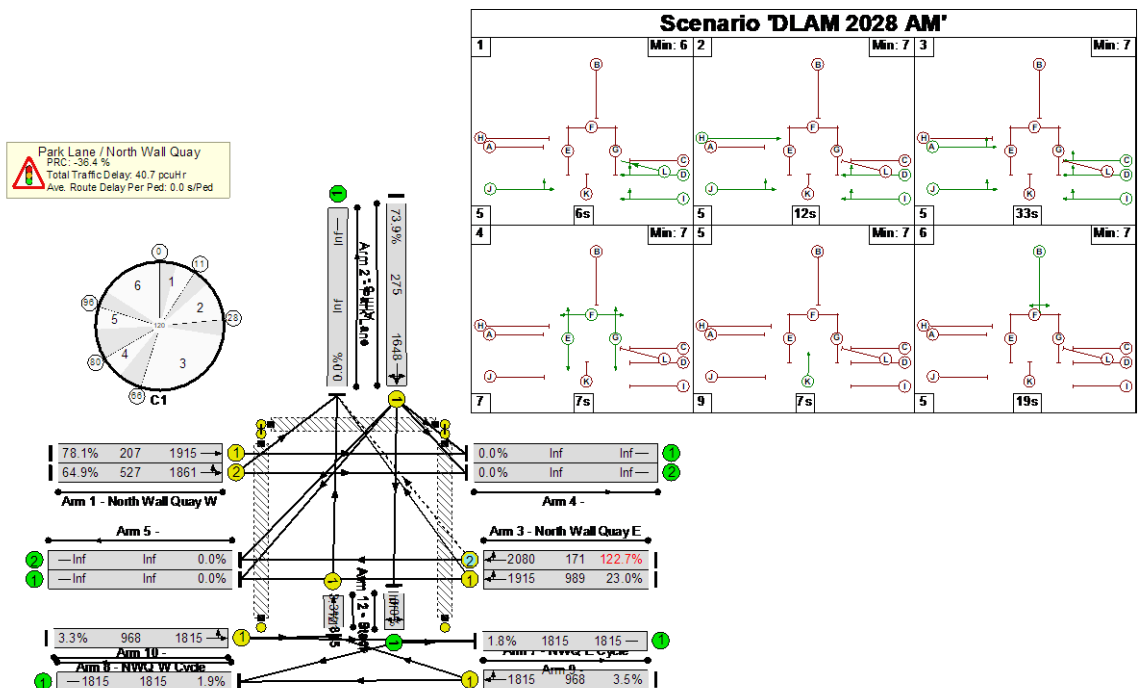
### Theoretical People Movement Capacity



### Do Something : 2028 : AM

Cycle = 120secs  
 PRC = -36.4%  
 Delay = 41pcuHr

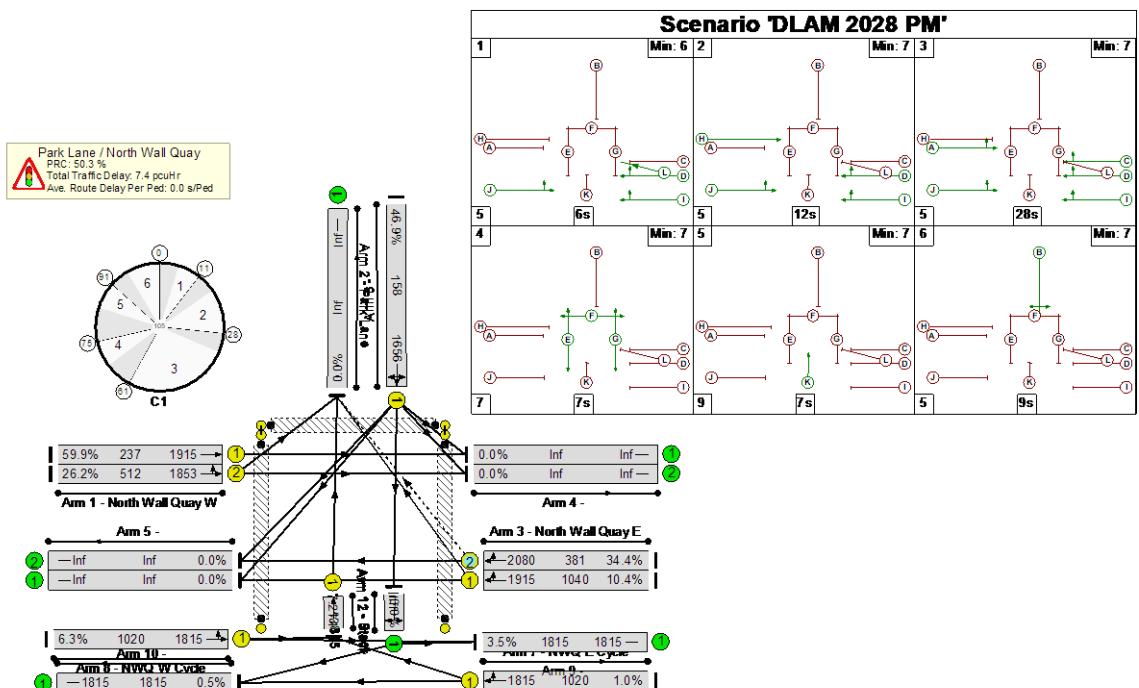
Bus Delay  
 Inbound = 18s  
 Outbound = 89s



### Do Something : 2028 : PM

Cycle = 105secs  
 PRC = 50.3%  
 Delay = 8pcuHr

Bus Delay  
 Inbound = 14s  
 Outbound = 62s



Subject	BusConnects Core Bus Corridors Junction Design Rationale		
Date	May 2022		
Route	Ringsend to City Centre Scheme	Job No/Ref	19.117

## New Wapping Street/North Wall Quay

### Summary

Junction is in compliance with the BusConnects Preliminary Design Guidance Booklet with respect to pedestrians, cyclists and buses.

Layout of junction updated introducing protected cycle infrastructure and new Bus lane infrastructure in the eastbound and westbound direction and improving approach and egress alignments.

The design rationale is to provide more priority to buses, enable bus priority signalling, and to improve pedestrian and cyclist safety.

### Signal Operation

A five stage signal operation.

Bus Priority Signal for right turning buses.

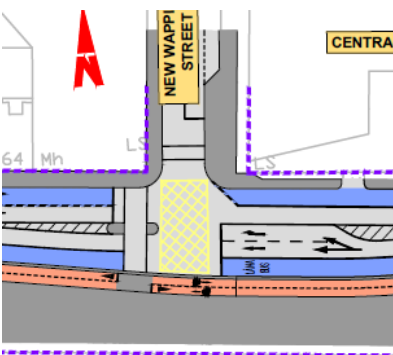
Pedestrian crossings operate in their own stage.

EXISTING



Change Made	Reason for Change	Impact of Change
-------------	-------------------	------------------

EPR

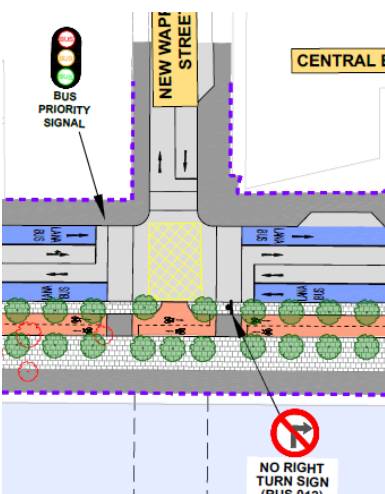


1. Two-way continuous cycle track introduced on the southern side.
2. Bus lane infrastructure continuous through the junction
3. Reduced pedestrian crossing locations
4. New Wapping Street narrowed to single traffic lane

1. To provide continuous cycle infrastructure.
2. To improve the bus priority along the north quays
3. Reduced pedestrian footpath width on the northern footpath to accommodate both passing and waiting pedestrians
4. Anticipated reduced traffic demand

1. Improved cycle facilities along the north quays
2. Improved bus provision along the north quays.
3. Reduced pedestrian crossing opportunities
4. Improved public realm area

DRAFT PRO (PC2)

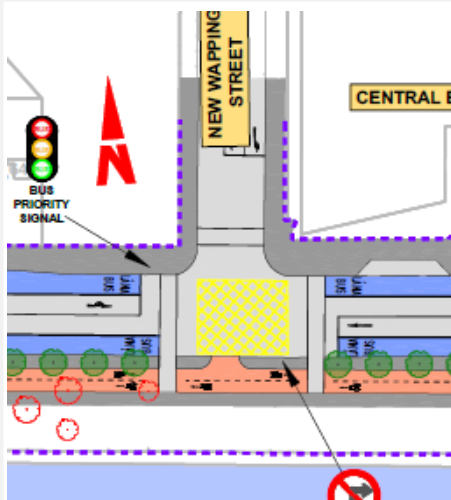


1. Pedestrian crossing reinstated
2. Access provided for cyclists on the two-way cycle track to and from New Wapping Street
3. Tree landscaping included
4. Right turn lane removed and right turn ban introduced

1. To reinstate existing crossing opportunities for pedestrians
2. To improve interconnectivity between radial and orbital cycle infrastructure
3. To ensure segregation between cyclists and pedestrians
4. To improve the operational capacity of the junction

1. Pedestrian crossing priority reinstated
2. Direct access provided for cyclists to and from New Wapping Street
3. Improved visual amenity and character of the campshires
4. Reduced impact on the Liffey Campshires and reduced carriageway width

DRAFT PRO (PC3)



1. Reduced landscaping
2. Two lanes on New Wapping Street reinstated
3. Controlled crossings across cycle track

1. Taking into consideration separate plans for the Liffey Campshires
2. Traffic capacity of the junction compromised
3. To provide pedestrian right of way across the cycle track

1. Reduced landscaping and footpath adjacent to the cycle track
2. Improved junction capacity
3. Increased pedestrian intergreen times and reduced junction operational capacity

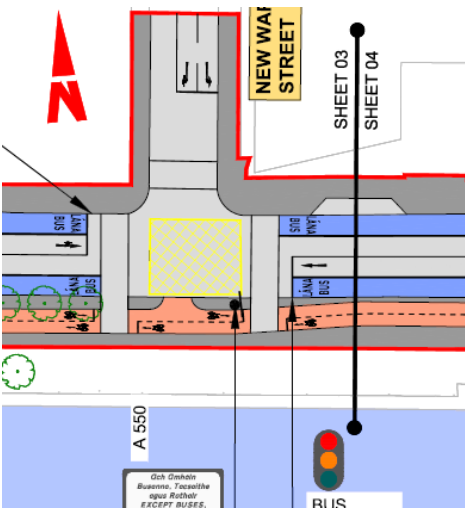
Subject	BusConnects Core Bus Corridors Junction Design Rationale		
Date	May 2022		
Route	Ringsend to City Centre Scheme	Job No/Ref	19.117

New Wapping Street/North Wall Quay

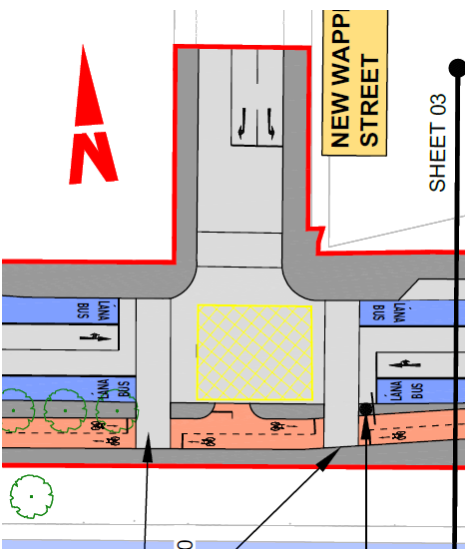
EXISTING



STAGE B REVIEW



FINAL DRAFT (WIP)



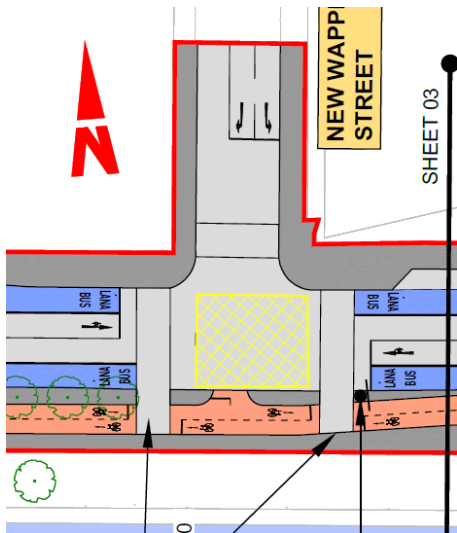
Change Made	Reason for Change	Impact of Change
<ol style="list-style-type: none"> <li>Further reduced landscaping</li> </ol>	<ol style="list-style-type: none"> <li>To improve pedestrian public realm area</li> </ol>	<ol style="list-style-type: none"> <li>Narrowed verge and wider pedestrian public realm</li> </ol>
<ol style="list-style-type: none"> <li>Right turn manoeuvre reinstated</li> </ol>	<ol style="list-style-type: none"> <li>To maintain sufficient accessibility to East Wall</li> </ol>	<ol style="list-style-type: none"> <li>Reduced operational capacity of the junction but accessibility to deprived geographical area maintained</li> </ol>



Subject	BusConnects Core Bus Corridors Junction Design Rationale		
Date	May 2022		
Route	Ringsend to City Centre Scheme	Job No/Ref	19.117

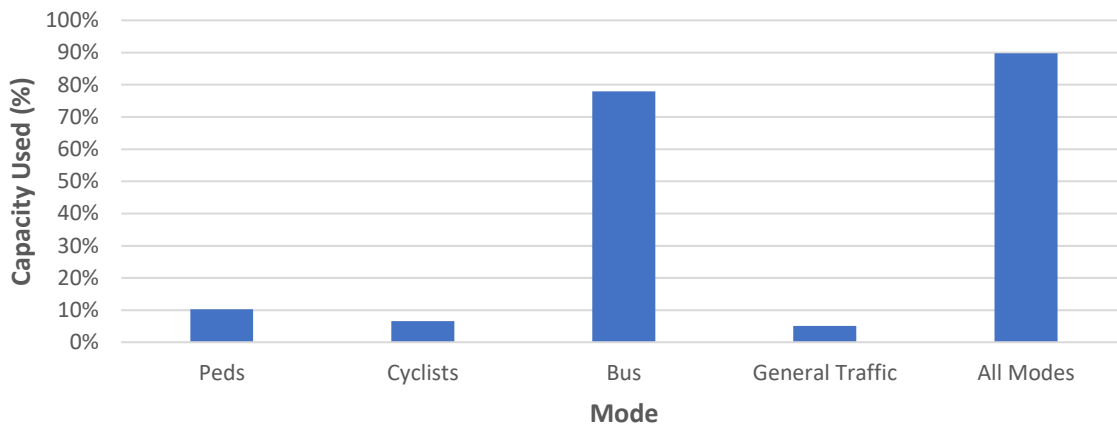
## New Wapping Street/North Wall Quay

### Capacity / Delay



### People Movement Calculator – Capacity

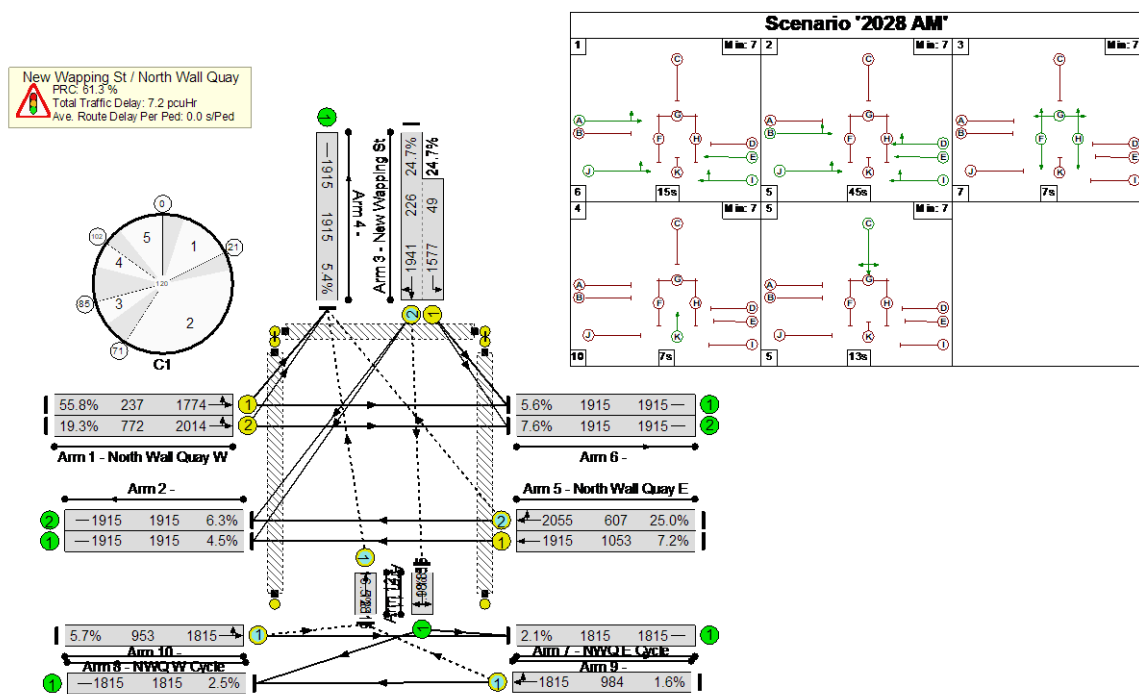
#### Theoretical People Movement Capacity



### Do Something : 2028 : AM

Cycle = 120secs  
 PRC = 61.3%  
 Delay = 7pcuHr

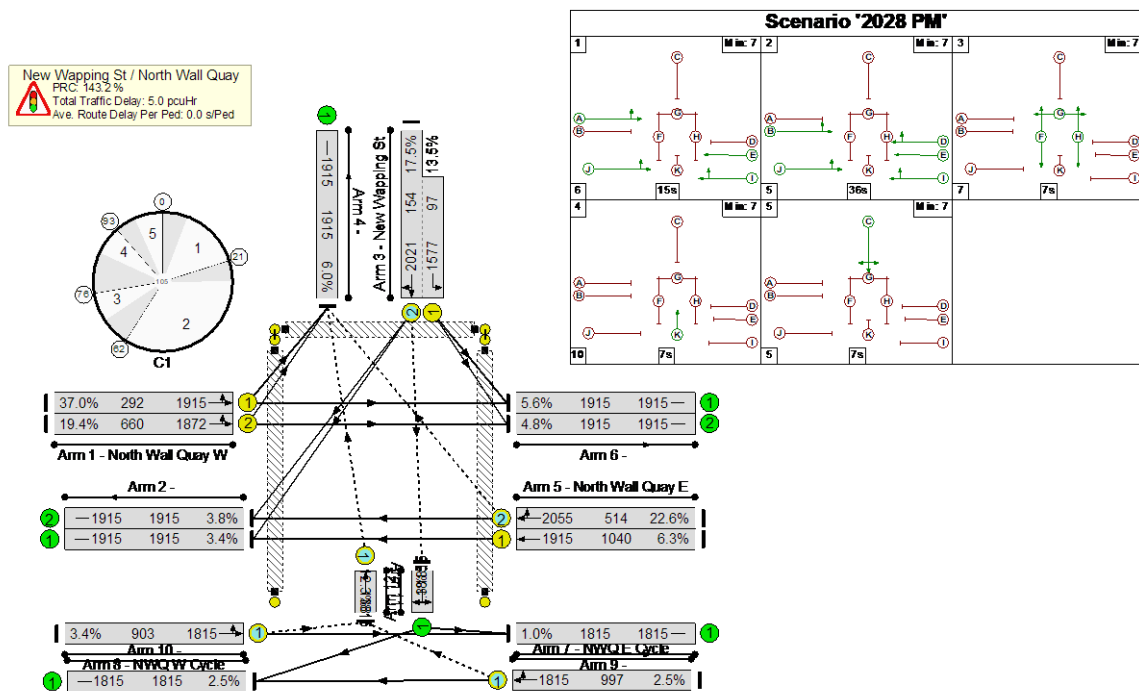
Bus Delay  
 Inbound = 15s  
 Outbound = 66s



### Do Something : 2028 : PM

Cycle = 105secs  
 PRC = 143.2%  
 Delay = 4.96pcuHr

Bus Delay  
 Inbound = 13s  
 Outbound = 50s



Subject	BusConnects Core Bus Corridors Junction Design Rationale		
Date	May 2022		
Route	Ringsend to City Centre Scheme	Job No/Ref	19.117

## Castleforbes Street/North Wall Quay

### Summary

Junction is in compliance with the BusConnects Preliminary Design Guidance Booklet with respect to pedestrians, cyclists and buses.

The Junction has become fully signalised junction with new pedestrian crossings and new protected cycle infrastructure and new Bus lane infrastructure have been introduced.

The design rationale is to provide more priority to buses, enable bus priority signalling, and to improve pedestrian and cyclist safety.

### Signal Operation

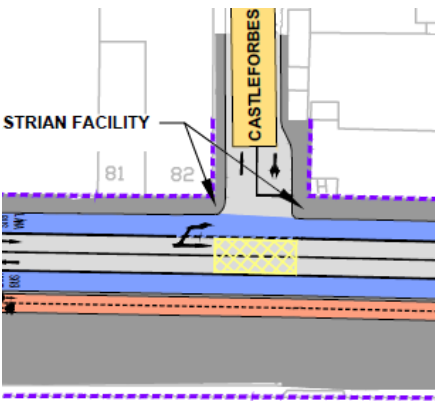
A five stage signal operation.

Pedestrian crossings operate in their own stage.

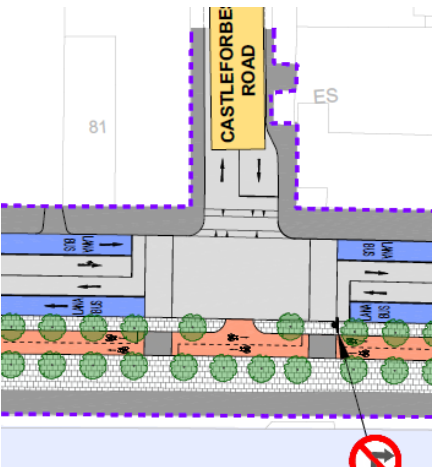
EXISTING



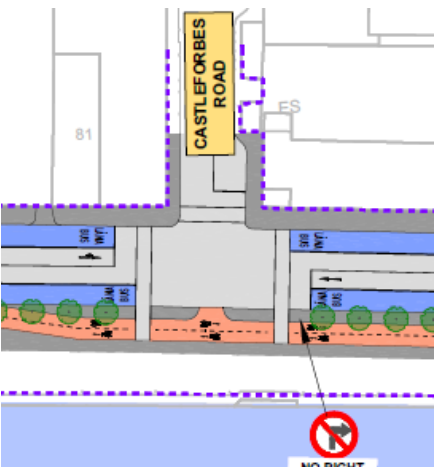
EPR



DRAFT PRO (PC2)



DRAFT PRO (PC3)



Change Made	Reason for Change	Impact of Change
<ol style="list-style-type: none"> <li>Inbound bus lane introduced</li> </ol>	<ol style="list-style-type: none"> <li>To improve bus provision along the north quays</li> </ol>	<ol style="list-style-type: none"> <li>All parking removed and improved bus provision.</li> </ol>
<ol style="list-style-type: none"> <li>Fully signalised junction with complete pedestrian crossing facilities on all arms</li> <li>Right turn ban introduced to Castleforbes Road</li> <li>Access provided for cyclists on the two-way cycle track to and from Castleforbes Road</li> <li>Tree landscaping included</li> </ol>	<ol style="list-style-type: none"> <li>To improve pedestrian crossing opportunities</li> <li>To improve the operational capacity of the junction</li> <li>To improve interconnectivity between radial and orbital cycle infrastructure</li> <li>To ensure segregation between cyclists and pedestrians</li> </ol>	<ol style="list-style-type: none"> <li>Improved pedestrian facilities</li> <li>Improved operation capacity through the junction</li> <li>Direct access provided for cyclists to and from Castleforbes Road</li> <li>Improved visual amenity and character of the campshires</li> </ol>
<ol style="list-style-type: none"> <li>Reduced landscaping</li> <li>Fully signalised pedestrian facilities</li> <li>Controlled crossings across cycle track</li> </ol>	<ol style="list-style-type: none"> <li>Taking into consideration separate plans for the Liffey Campshires To ensure the safety of pedestrians</li> <li>Ensure priority for pedestrians crossing all arms of the junction</li> <li>To ensure pedestrian right of way across cycle tracks</li> </ol>	<ol style="list-style-type: none"> <li>Reduced landscaping, footpath adjacent to the cycle track</li> <li>Fully controlled pedestrian facilities</li> <li>Increased pedestrian intergreen times and reduced operational capacity of the junction</li> </ol>

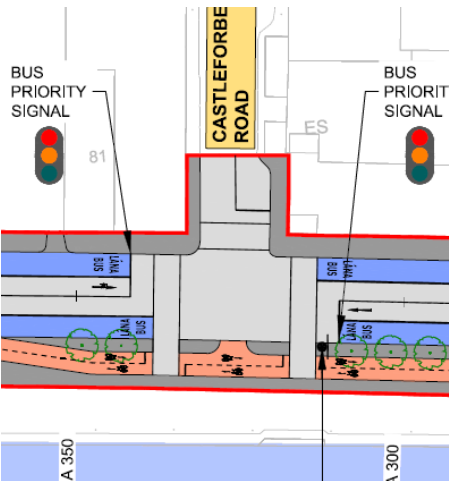
Subject	BusConnects Core Bus Corridors Junction Design Rationale		
Date	May 2022		
Route	Ringsend to City Centre Scheme	Job No/Ref	19.117

Castleforbes Street/North Wall Quay

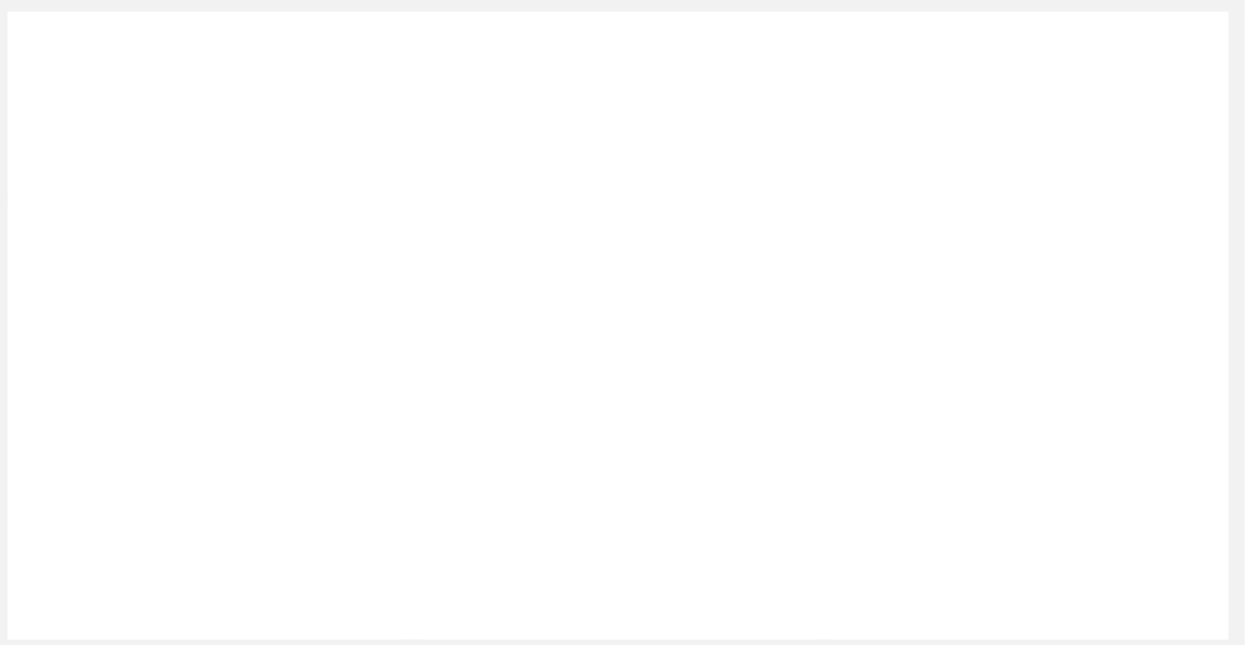
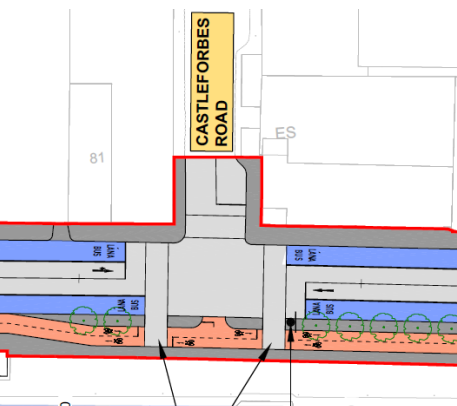
EXISTING



STAGE B REVIEW



FINAL DRAFT

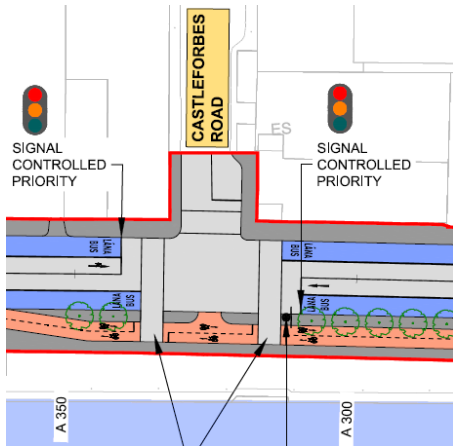


Change Made	Reason for Change	Impact of Change
1. None	1. None	1. None
1. None	1. None	1. None

Subject	BusConnects Core Bus Corridors Junction Design Rationale		
Date	May 2022		
Route	Ringsend to City Centre Scheme	Job No/Ref	19.117

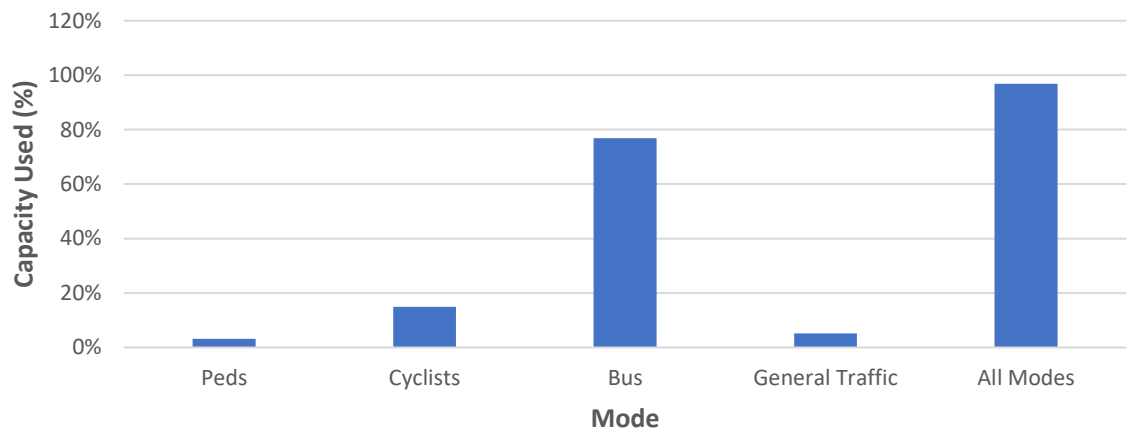
### Castleforbes Street/North Wall Quay

### Capacity / Delay



### People Movement Calculator – Capacity

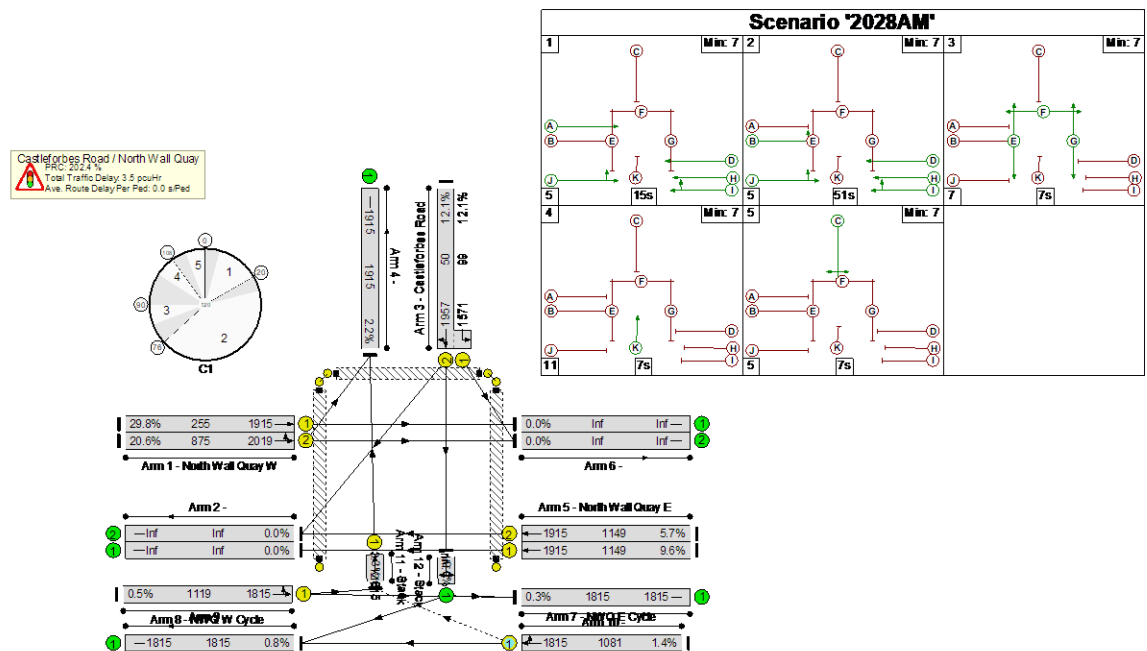
#### Theoretical People Movement Capacity



### Do Something : 2028 : AM

Cycle = 120secs  
 PRC = 202.4%  
 Delay = 4pcuHr

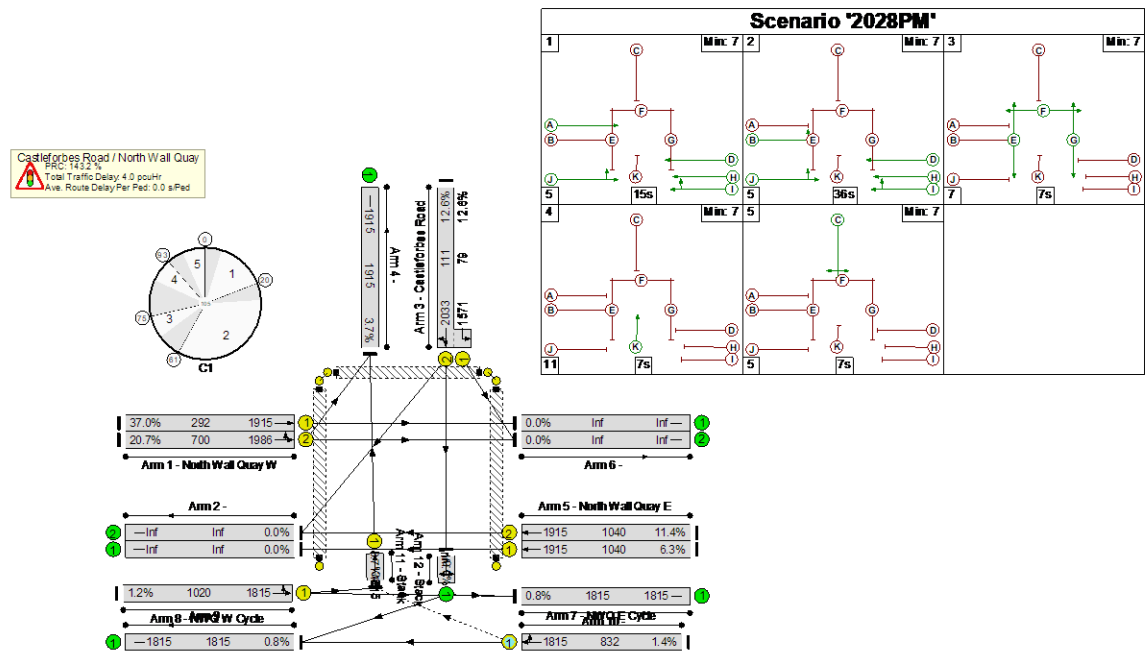
Bus Delay  
 Inbound = 12s  
 Outbound = 57s



### Do Something : 2028 : PM

Cycle = 105secs  
 PRC = 143.2%  
 Delay = 4pcuHr

Bus Delay  
 Inbound = 13s  
 Outbound = 50s



Subject	BusConnects Core Bus Corridors Junction Design Rationale		
Date	May 2022		
Route	Ringsend to City Centre Scheme	Job No/Ref	19.117

## North Wall Avenue/North Wall Quay

### Summary

Junction is in compliance with the BusConnects Preliminary Design Guidance Booklet with respect to pedestrians, cyclists and buses.

Layout of junction updated introducing protected cycle infrastructure and new Bus lane infrastructure in the eastbound and westbound direction and improving approach and egress alignments.

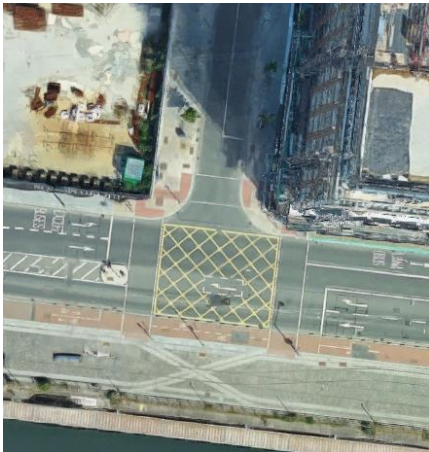
The design rationale is to provide more priority to buses, enable bus priority signalling, and to improve pedestrian and cyclist safety.

### Signal Operation

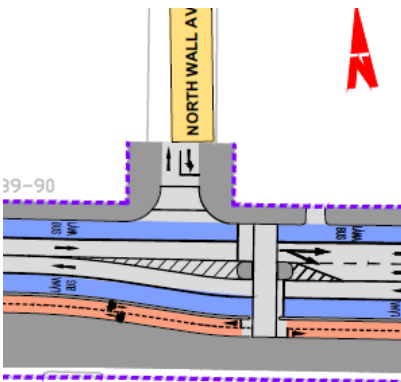
A five stage signal operation.

Pedestrian crossings operate in their own stage.

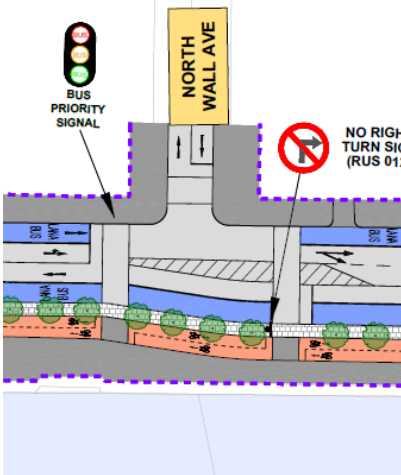
EXISTING



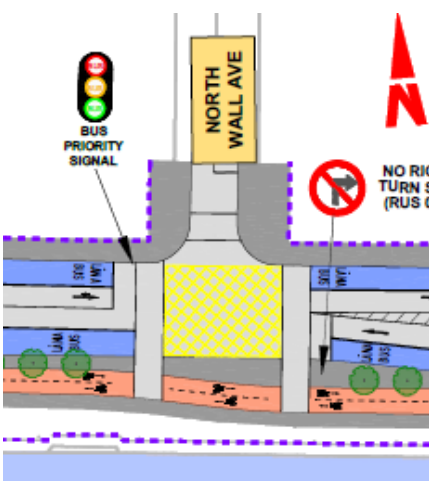
EPR



DRAFT PRO (PC2)



DRAFT PRO (PC3)



Change Made	Reason for Change	Impact of Change
<ol style="list-style-type: none"> <li>1. Removal of right turn lane to North Wall Avenue</li> <li>2. Bus lane infrastructure introduced in the inbound direction</li> <li>3. Removed pedestrian crossing at west of junction</li> <li>4. North Wall Avenue left turn only</li> </ol>	<ol style="list-style-type: none"> <li>1. To provide for bus lane infrastructure</li> <li>2. To improve bus priority along the north quays.</li> <li>3. To align with junction layout modifications.</li> <li>4. Traffic restrictions required due to geometric changes to the junction</li> </ol>	<ol style="list-style-type: none"> <li>1. Improved bus infrastructure along the north quays.</li> <li>2. Improved bus infrastructure along the north quays.</li> <li>3. Reduced pedestrian infrastructure provision.</li> <li>4. Local traffic redistribution on the surrounding road network</li> </ol>
<ol style="list-style-type: none"> <li>1. Pedestrian crossing reinstated</li> <li>2. Tree landscaping included</li> <li>3. Right turn ban to North Wall Avenue</li> <li>4. North Wall Avenue right turn reinstated</li> </ol>	<ol style="list-style-type: none"> <li>1. To provided a minimum level of service pedestrians</li> <li>2. To improve the visual amenity and character of the Liffey Camshires</li> <li>3. To improve the operational capacity of the junction</li> <li>4. To minimise traffic redistribution on the surrounding corridor</li> </ol>	<ol style="list-style-type: none"> <li>1. Better pedestrian crossing opportunities</li> <li>2. Improved visual amenity and character of the Liffey Campshires</li> <li>3. Improved operational capacity of the junction</li> </ol>
<ol style="list-style-type: none"> <li>1. Updated lane alignment east of junction</li> <li>2. Controlled crossings across cycle track</li> <li>3. Removal of hatched central island</li> <li>4. North Wall Avenue stop line set back</li> </ol>	<ol style="list-style-type: none"> <li>1. Increased footpath island on the southern side.</li> <li>2. To ensure pedestrian priority across the cycle tracks</li> <li>3. To align with the single lane exit outbound</li> <li>4. To facilitate over-sweep by buses</li> </ol>	<ol style="list-style-type: none"> <li>1. Improved cycling and pedestrian facilities</li> <li>2. Increased pedestrian intergreen times and reduced operational capacity of the junction</li> <li>3. Reduced junction footprint</li> <li>4. Safer turning manoeuvres onto North Wall Avenue</li> </ol>

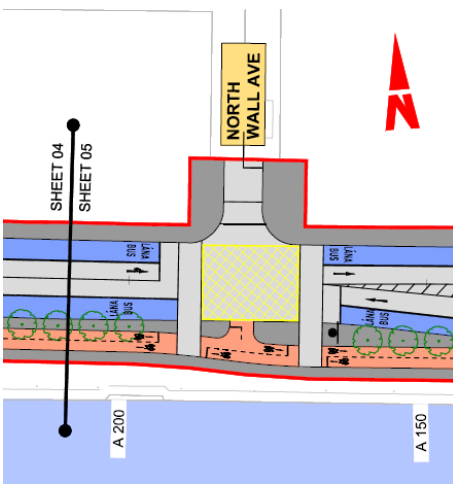
Subject	BusConnects Core Bus Corridors Junction Design Rationale		
Date	May 2022		
Route	Ringsend to City Centre Scheme	Job No/Ref	19.117

North Wall Avenue/North Wall Quay

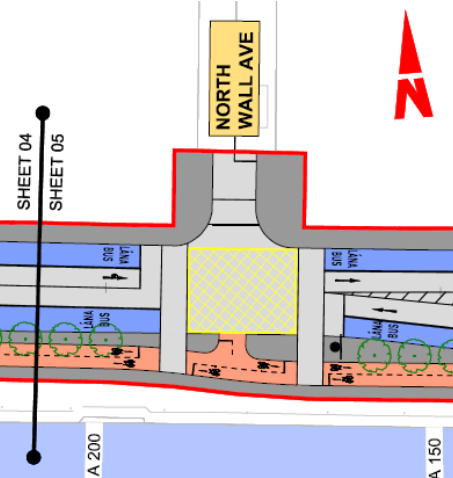
EXISTING



STAGE B REVIEW



FINAL DRAFT

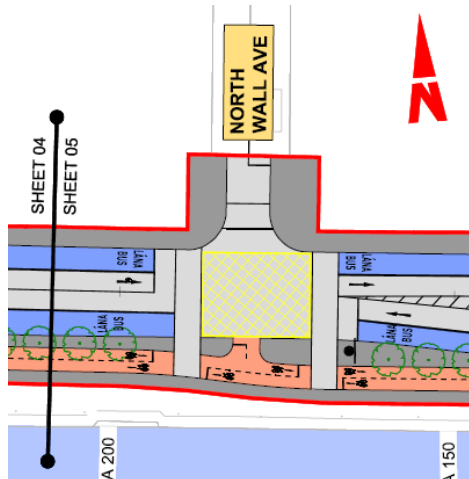


Change Made	Reason for Change	Impact of Change
<ol style="list-style-type: none"> <li>Access provided for cyclists on the two-way cycle track to and from North Wall Avenue</li> </ol>	<ol style="list-style-type: none"> <li>To improve interconnectivity between radial and orbital cycle infrastructure</li> </ol>	<ol style="list-style-type: none"> <li>Direct access provided for cyclists to and from North Wall Avenue</li> </ol>
<ol style="list-style-type: none"> <li>None</li> </ol>	<ol style="list-style-type: none"> <li>None</li> </ol>	<ol style="list-style-type: none"> <li>None</li> </ol>

Subject	BusConnects Core Bus Corridors Junction Design Rationale		
Date	May 2022		
Route	Ringsend to City Centre Scheme	Job No/Ref	19.117

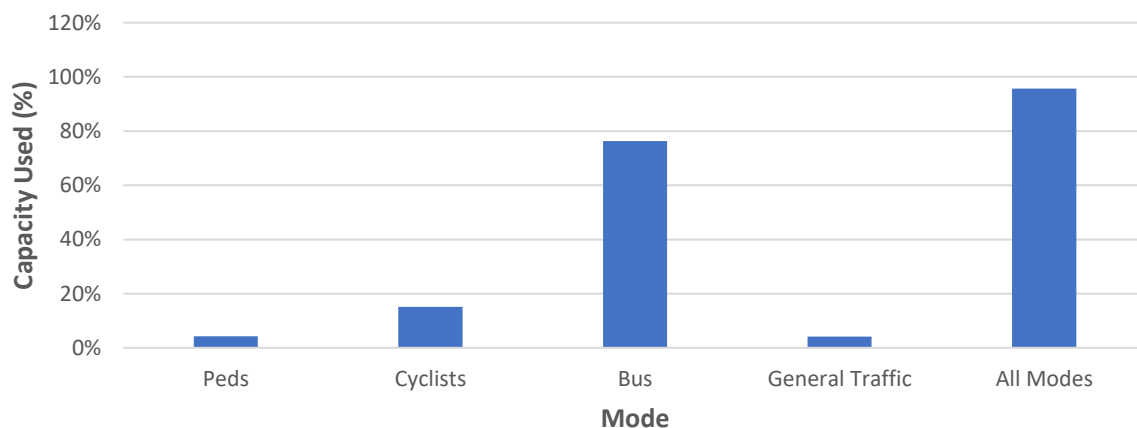
### North Wall Avenue/North Wall Quay

### Capacity / Delay



### People Movement Calculator – Capacity

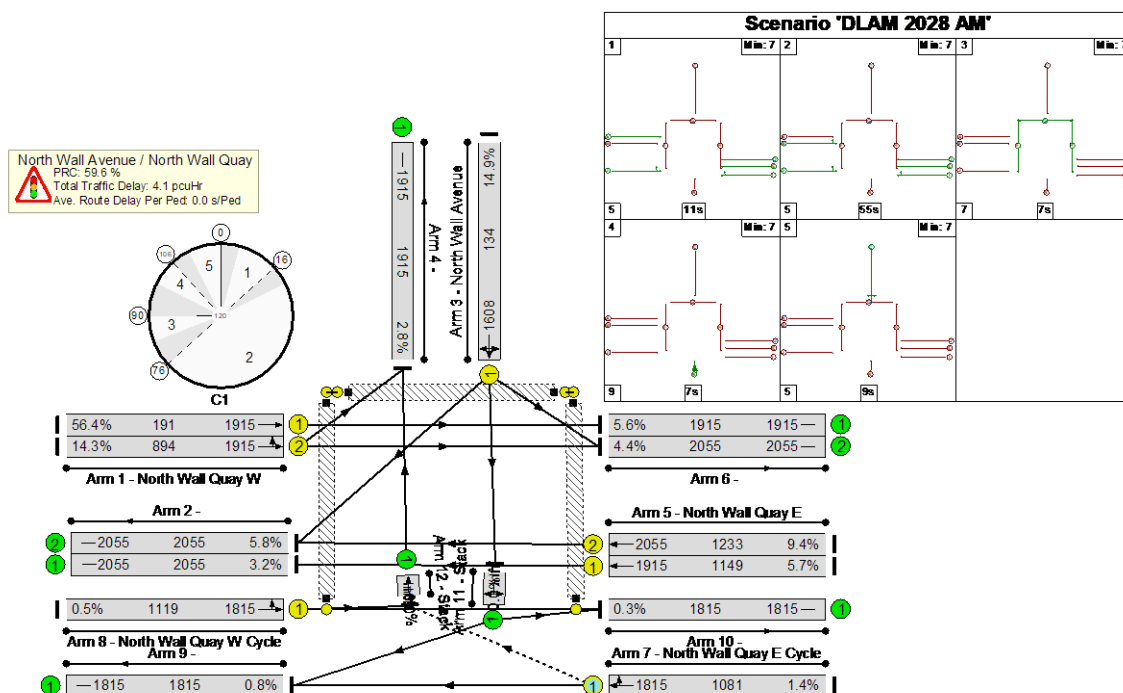
#### Theoretical People Movement Capacity



### Do Something : 2028 : AM

Cycle = 120secs  
 PRC = 59.6%  
 Delay = 4pcuHr

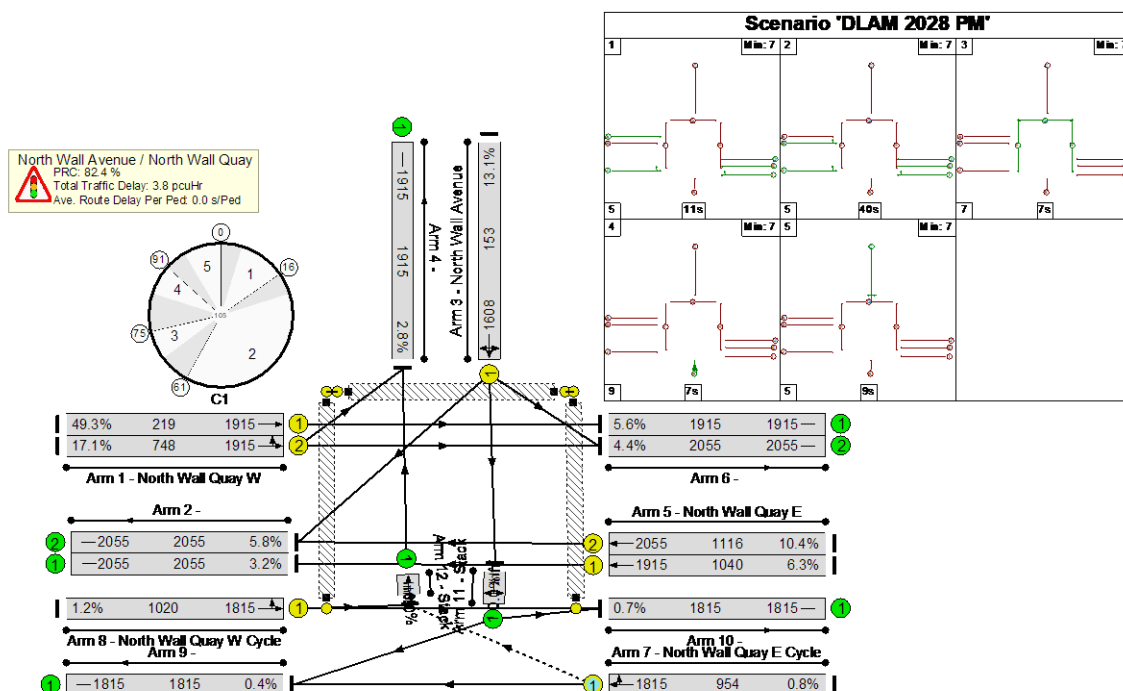
Bus Delay  
 Inbound = 12s  
 Outbound = 73s



### Do Something : 2028 : PM

Cycle = 105secs  
 PRC = 82.4%  
 Delay = 4pcuHr

Bus Delay  
 Inbound = 13s  
 Outbound = 60s



Subject	BusConnects Core Bus Corridors Junction Design Rationale		
Date	May 2022		
Route	Ringsend to City Centre Scheme	Job No/Ref	19.117

## Lombard Street/City Quay

### Summary

Junction is in compliance with the BusConnects Preliminary Design Guidance Booklet with respect to pedestrians, cyclists and buses.

Layout of junction updated introducing new Bus lane infrastructure and improving approach and egress alignments pedestrian and cycle crossing.

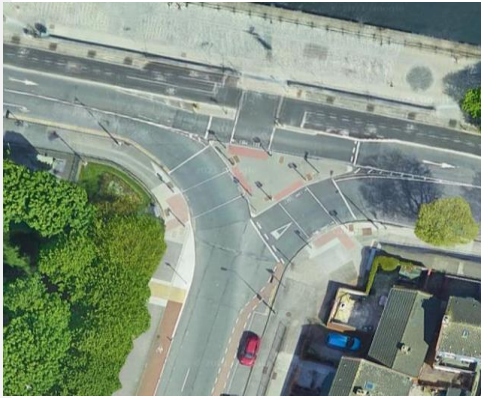
The design rationale is to provide more priority to buses, enable bus priority signalling, and to improve pedestrian and cyclist safety.

### Signal Operation

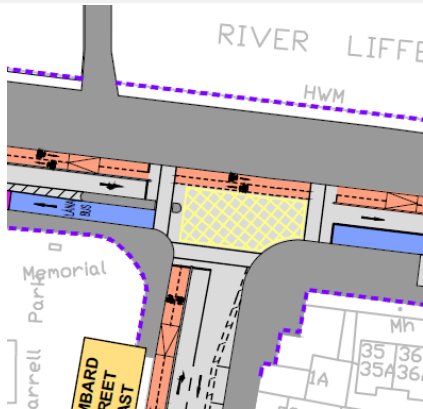
A five stage signal operation.

Pedestrian crossings operate in their own stage.

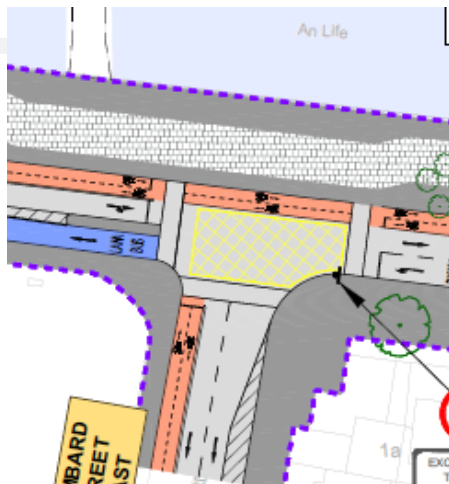
EXISTING



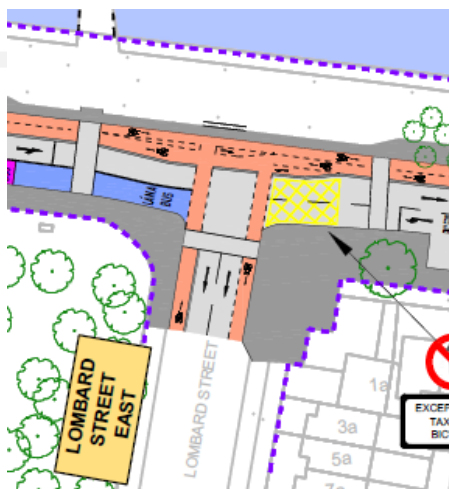
EPR



DRAFT PRO (PC2)



DRAFT PRO (PC3)



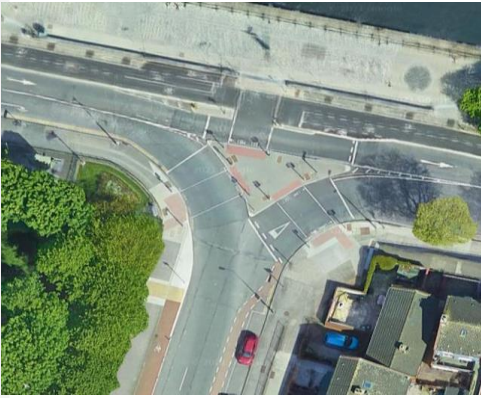
Change Made	Reason for Change	Impact of Change
<ol style="list-style-type: none"> <li>1. Removal of splitter island</li> <li>2. Inbound bus lane infrastructure provided</li> <li>3. South quays reduced to single eastbound lane</li> <li>4. North-south two-way cycle track on Lombard Street East</li> <li>5. Pedestrian crossing facilities re-configured</li> </ol>	<ol style="list-style-type: none"> <li>1. To allow for the provision of bus infrastructure</li> <li>2. To provide inbound bus priority along the south quays</li> <li>3. To provide improved cycle facilities</li> <li>4. All pedestrian crossings linked with the splitter island</li> </ol>	<ol style="list-style-type: none"> <li>1. Improved cycle infrastructure</li> <li>2. Local traffic redistribution on alternative streets</li> <li>3. Dedicated lane for turning right from the west removed to improve bus infrastructure.</li> <li>4. Improved cycle infrastructure provision</li> <li>5. Single crossing movements across all arms</li> </ol>
<ol style="list-style-type: none"> <li>1. Bus lane shared with left turning at east of junction</li> <li>2. Southbound cycle lane removed on Lombard Street East</li> <li>3. Parking removed</li> </ol>	<ol style="list-style-type: none"> <li>1. Alternative streets not suitable to carry redistributed traffic</li> <li>2. Alternative cycle track provided on western side of Lombard Street East</li> <li>3. Reduce vehicular conflicts along Lombard Street East</li> </ol>	<ol style="list-style-type: none"> <li>1. Less impact on unsuitable alternative streets however reduced bus priority.</li> <li>2. Reduced cycle infrastructure provision</li> <li>3. Removal of amenity for local residents</li> </ol>
<ol style="list-style-type: none"> <li>1. Access provided for cyclists on the two-way cycle track to and from Lombard Street East</li> <li>2. Contra-flow cycle lane on Lombard Street East</li> <li>3. Southbound cycle lane on Lombard Street East reinstated</li> </ol>	<ol style="list-style-type: none"> <li>1. To align with recent cycle track upgrades carried out by OPW</li> <li>2. To tie in with existing cycle infrastructure further south on Lombard Street East</li> <li>3. To tie in with existing cycle infrastructure further south on Lombard Street East</li> </ol>	<ol style="list-style-type: none"> <li>1. Direct access provided for cyclists to and from Lombard Street East and existing high quality cycle infrastructure provision retained</li> <li>2. Ensures continuity in quality of cycle infrastructure on Lombard Street East</li> <li>3. Ensures continuity in quality of cycle infrastructure on Lombard Street East</li> </ol>



Subject	BusConnects Core Bus Corridors Junction Design Rationale		
Date	May 2022		
Route	Ringsend to City Centre Scheme	Job No/Ref	19.117

Lombard Street/City Quay

EXISTING



STAGE B REVIEW



FINAL DRAFT

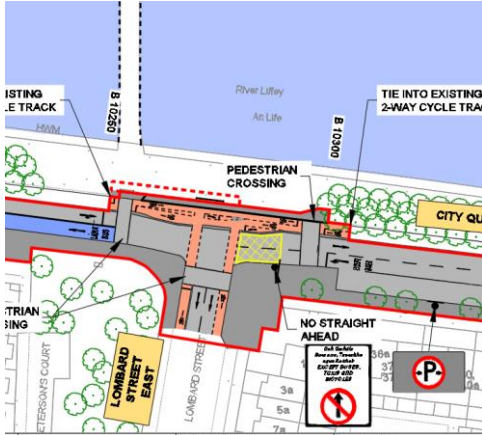


Change Made	Reason for Change	Impact of Change
1. None	1. None	1. None
1. None	1. None	1. None

Subject	BusConnects Core Bus Corridors Junction Design Rationale		
Date	May 2022		
Route	Ringsend to City Centre Scheme	Job No/Ref	19.117

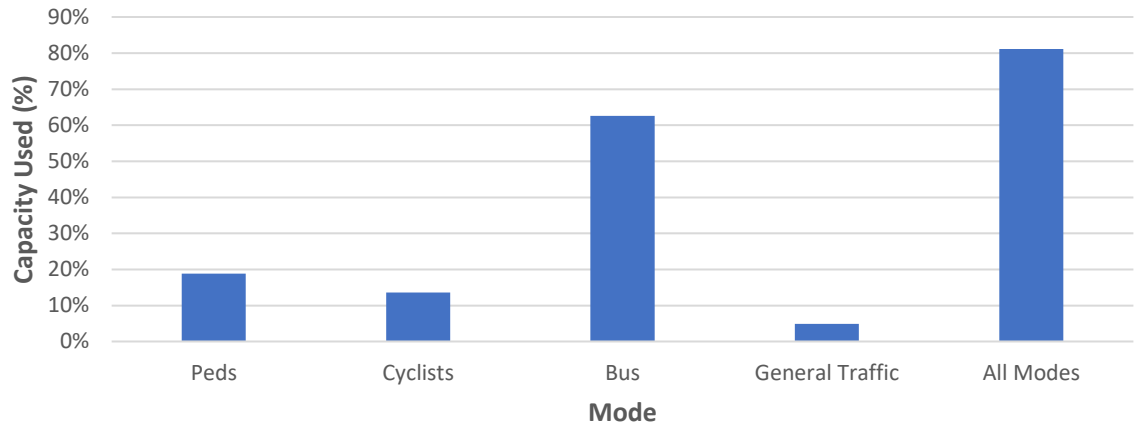
### Lombard Street/City Quay

### Capacity / Delay



### People Movement Calculator – Capacity

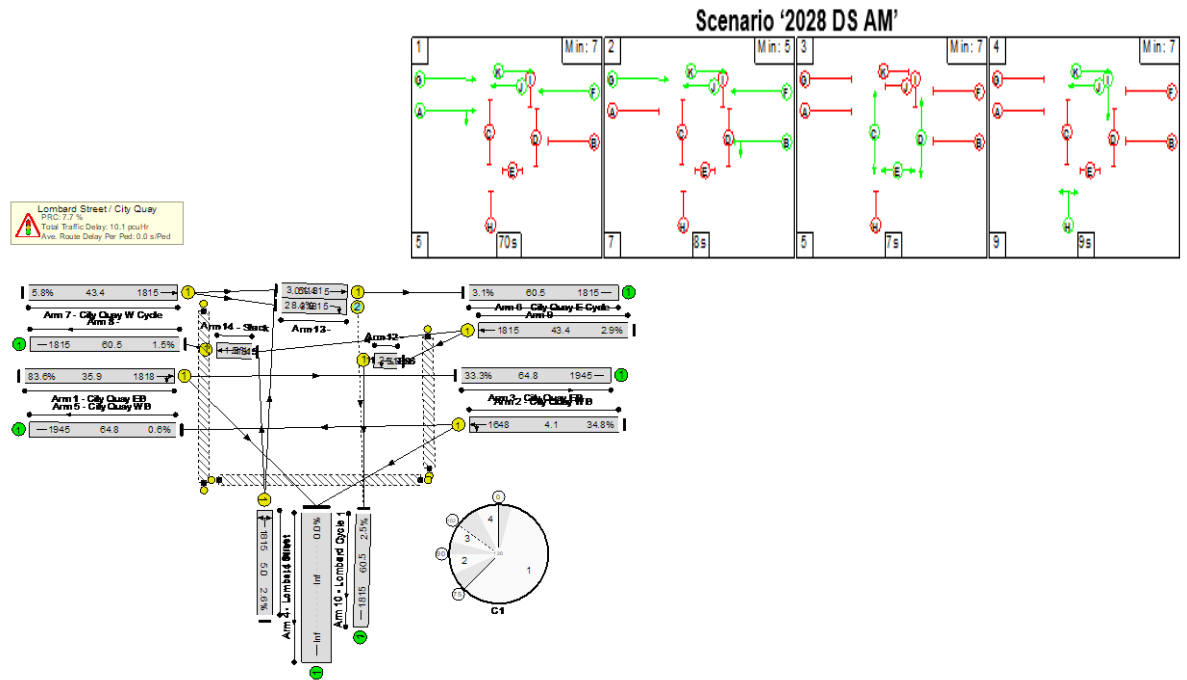
Theoretical People Movement Capacity



### Do Something : 2028 : AM

Cycle = 120secs  
 PRC = 0.1%  
 Delay = 13pcuHr

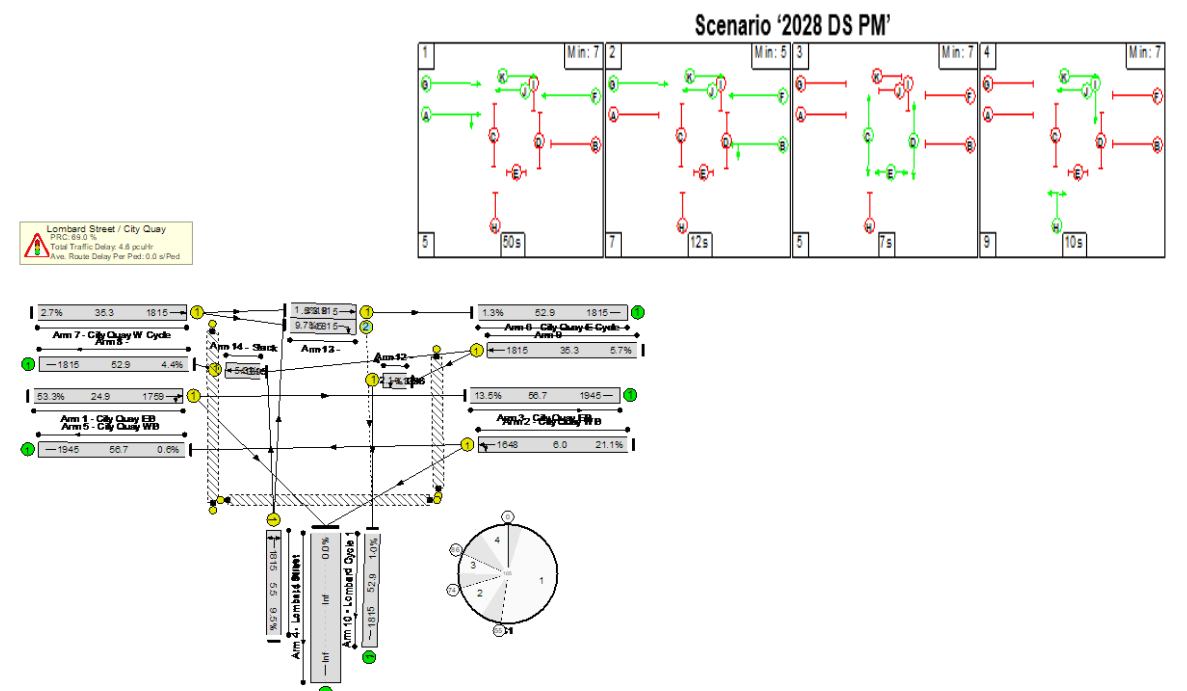
Bus Delay  
 Inbound = 75s  
 Outbound = N/A



### Do Something : 2028 : PM

Cycle = 105secs  
 PRC = 52.4%  
 Delay = 5pcuHr

Bus Delay  
 Inbound = 53s  
 Outbound = N/A



Subject	BusConnects Core Bus Corridors Junction Design Rationale		
Date	May 2022		
Route	Ringsend to City Centre Scheme	Job No/Ref	19.117

## Cardiff Lane/Sir John Rogerson's Quay

### Summary

Junction is in compliance with the BusConnects Preliminary Design Guidance Booklet with respect to pedestrians, cyclists and buses.

Layout of junction updated introducing protected cycle infrastructure and new Bus lane infrastructure in the eastbound and westbound direction and improving approach and egress alignments.

The design rationale is to provide more priority to buses, enable bus priority signalling, and to improve pedestrian and cyclist safety.

### Signal Operation

A six stage signal operation.

Signal controlled priority for buses.

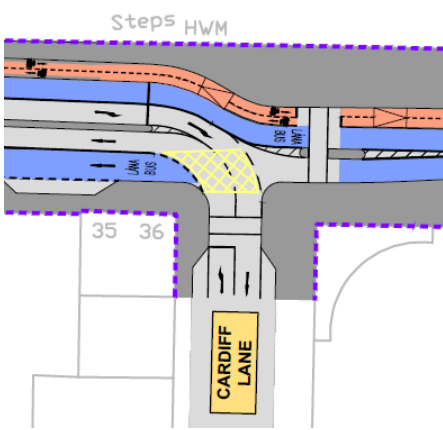
Toucan and pedestrian crossings operate in their own stage

EXISTING



Change Made	Reason for Change	Impact of Change
-------------	-------------------	------------------

EPR

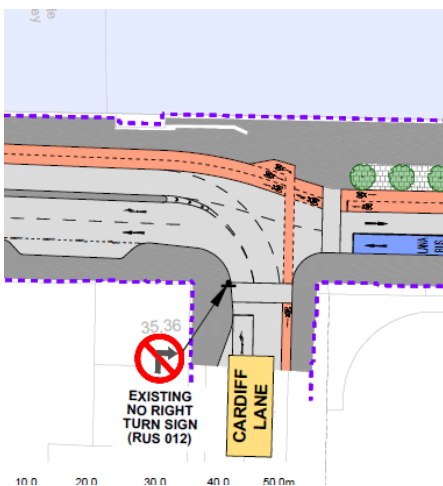


1. Inbound bus lane infrastructure introduced
2. Outbound Bus lane infrastructure introduced
3. Shared space interface at pedestrian crossing removed
4. Cardiff Lane reduced to single left turn lane

1. To provide bus priority access from the Dodder PT Bridge
2. To provide bus priority access to the Dodder PT bridge
3. To improve the segregation between cyclists and pedestrians at the crossing
4. Reduced capacity demands expected

1. Restricts access to premises on Sir John Rogerson's Quay
2. Restricts access to premises on Sir John Rogerson's Quay
3. Improved safety for waiting pedestrians
4. Improved pedestrian facilities

DRAFT PRO (PC2)

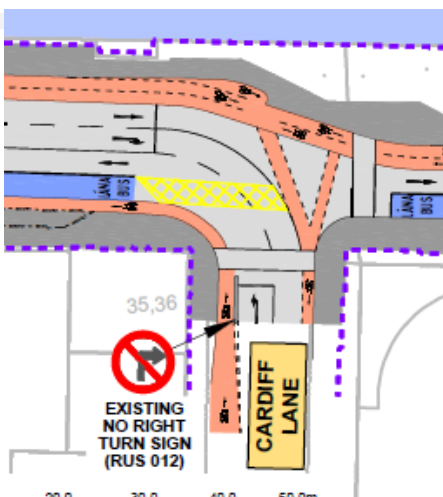


1. Shared outbound traffic lane
2. Southbound cycle lane on Cardiff Lane
3. Shared inbound traffic lanes on approach to Samuel Beckett Bridge
4. Tree landscaping included

1. To reduce the road carriageway and provide additional space to pedestrians along the quays
2. To provide access for cyclists in the southbound direction
3. To segregate westbound and northbound traffic movements
4. To ensure segregation between cyclists and pedestrians

1. Improved pedestrian facilities however reduced southbound capacity from Samuel Beckett Bridge
2. Improved accessibility for cyclists in the southbound direction
3. Reduced bus priority infrastructure
4. Improved visual amenity and character of the campshires

DRAFT PRO (PC3)



1. Two lanes reinstated in the outbound direction
2. Cycle lane provided on Cardiff Lane and continued inbound
3. Dedicated inbound bus lane
4. Landscaping scope reduced

1. In keeping with developing BusConnects design principles.
2. In keeping with developing BusConnects design principles.
3. To provide westbound bus infrastructure
4. Taking into consideration separate plans for the Liffey Campshires To ensure the safety of pedestrians

1. Reallocation of road space
2. Improved alignment
3. Improved bus provision in the westbound direction
4. Reduced landscaping and footpath adjacent to the cycle track

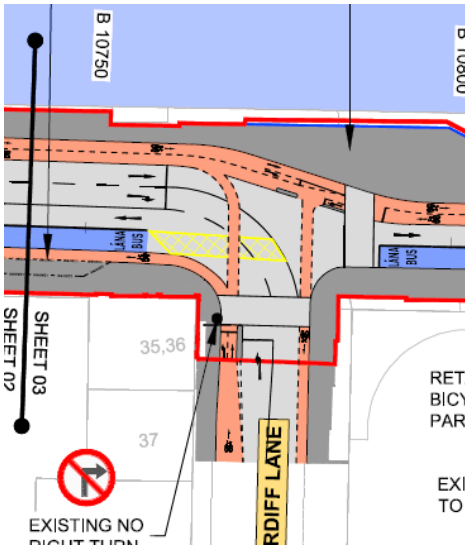
Subject	BusConnects Core Bus Corridors Junction Design Rationale		
Date	May 2022		
Route	Ringsend to City Centre Scheme	Job No/Ref	19.117

Cardiff Lane/Sir John Rogerson's Quay

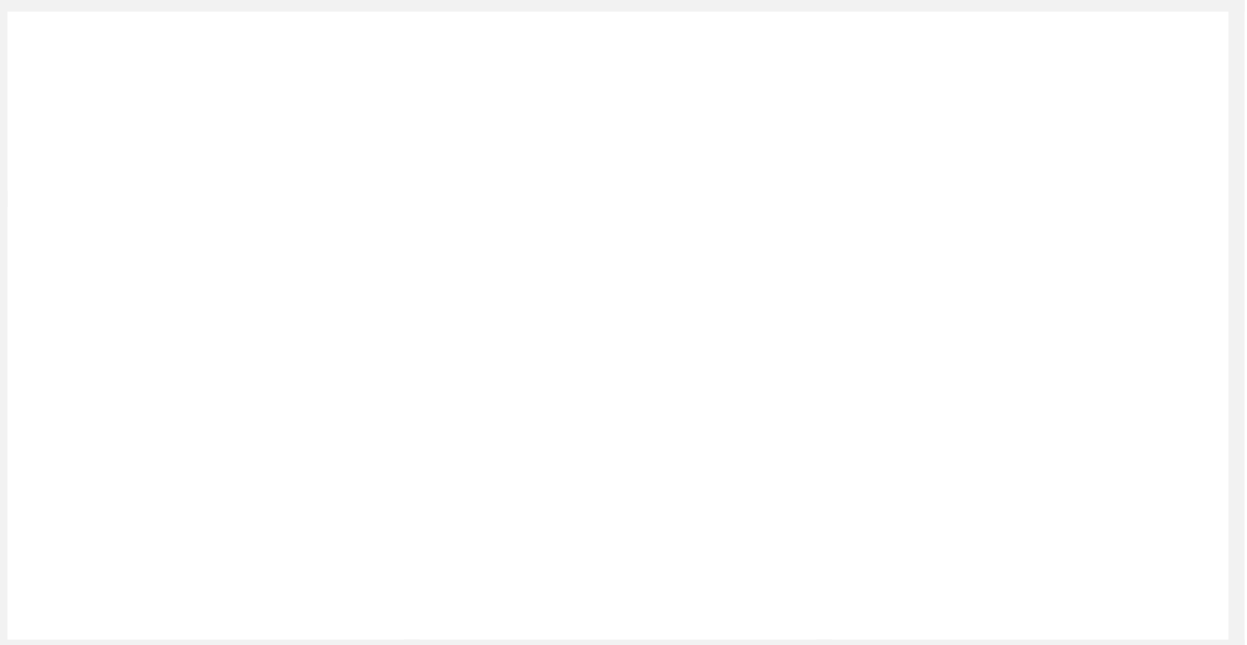
EXISTING



STAGE B REVIEW



FINAL DRAFT

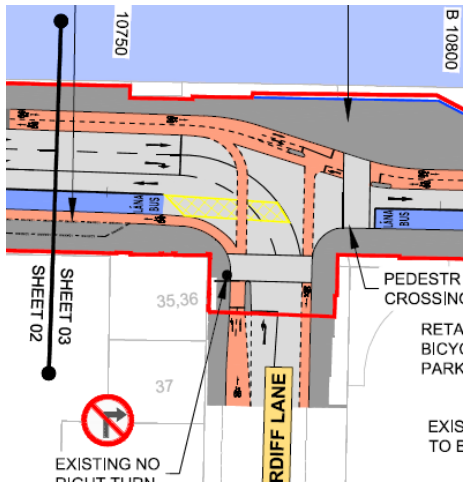


Change Made	Reason for Change	Impact of Change
<ol style="list-style-type: none"> <li>Protected cycle infrastructure updated</li> <li>Northbound connection provided to the two-way cycle track</li> </ol>	<ol style="list-style-type: none"> <li>To ensure protection for cyclists through the junction</li> <li>Improved connectivity between the two-way cycle track and to facilitate right turning cyclists from Cardiff Lane</li> </ol>	<ol style="list-style-type: none"> <li>Improved cycle facilities</li> <li>Improved cycle facilities</li> </ol>
<ol style="list-style-type: none"> <li>None</li> </ol>	<ol style="list-style-type: none"> <li>None</li> </ol>	<ol style="list-style-type: none"> <li>None</li> </ol>

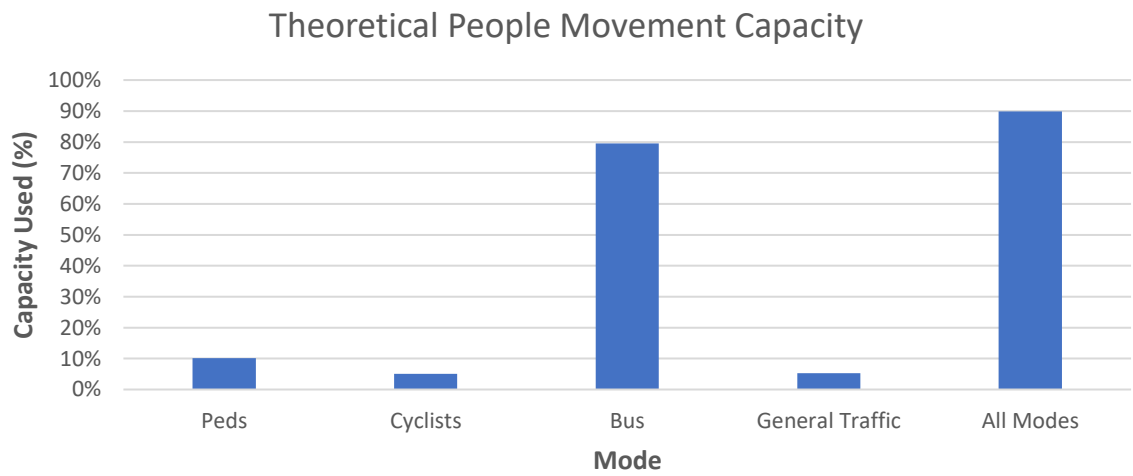
Subject	BusConnects Core Bus Corridors Junction Design Rationale		
Date	May 2022		
Route	Ringsend to City Centre Scheme	Job No/Ref	19.117

Cardiff Lane/Sir John Rogerson's Quay

Capacity / Delay



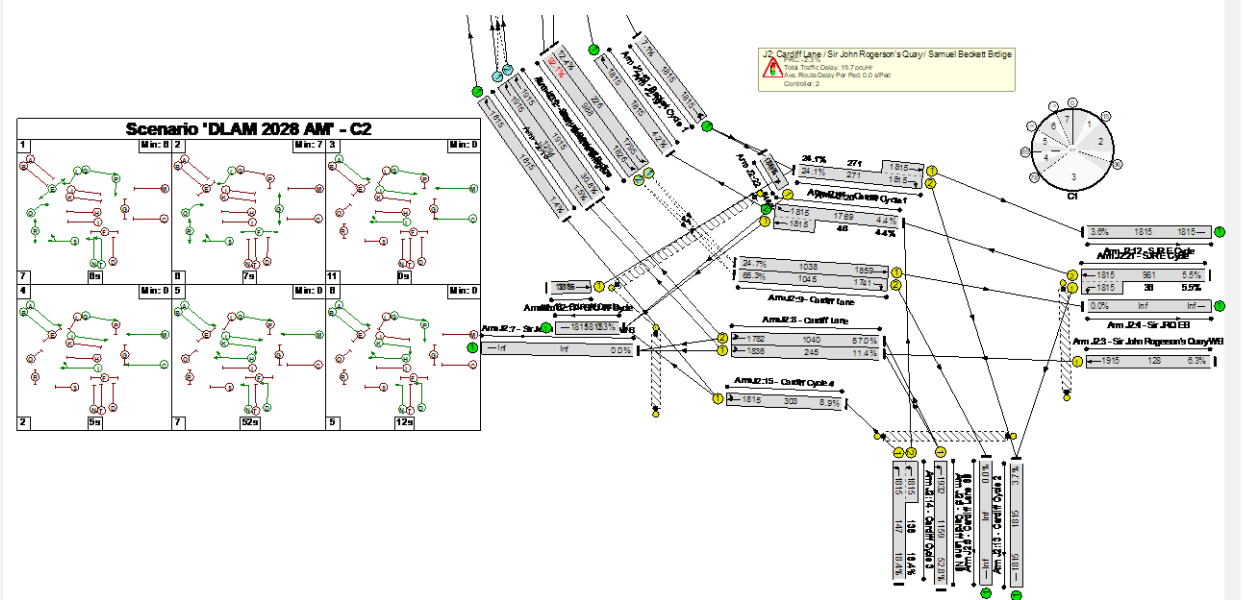
People Movement Calculator – Capacity



Do Something : 2028 : AM

Cycle = 120secs  
 PRC = -2.3%  
 Delay = 19pcuHr

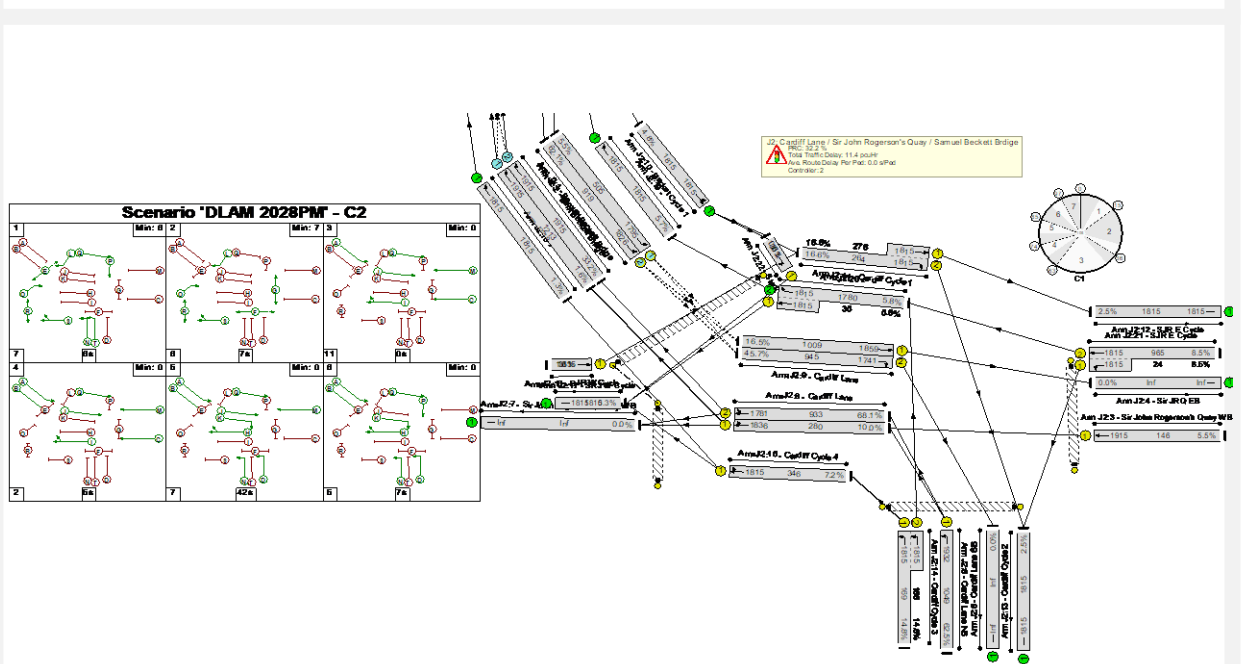
Bus Delay  
 Inbound = 68s  
 Outbound = N/A



Do Something : 2028 : PM

Cycle = 105secs  
 PRC = 32.2%  
 Delay = 11pcuHr

Bus Delay  
 Inbound = 58s  
 Outbound = N/A



Subject	BusConnects Core Bus Corridors Junction Design Rationale		
Date	May 2022		
Route	Ringsend to City Centre Scheme	Job No/Ref	19.117

## Forbes Street/Sir John Rogerson's Quay

### Summary

Junction is in compliance with the BusConnects Preliminary Design Guidance Booklet with respect to pedestrians, cyclists and buses.

Layout of junction updated improving protected cycle infrastructure, pedestrian crossing, Bus lane infrastructure and egress alignments.

The design rationale is to provide more priority to buses and to improve pedestrian and cyclist safety.

### Signal Operation

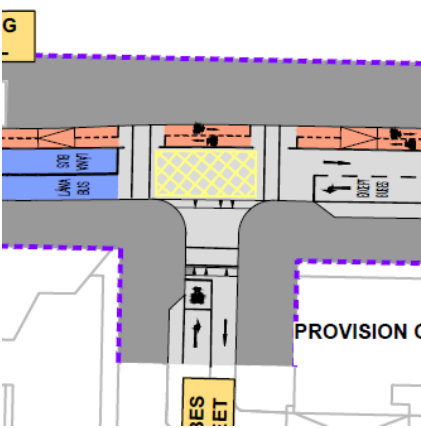
A four stage signal operation.

Pedestrian crossings operate in their own stage.

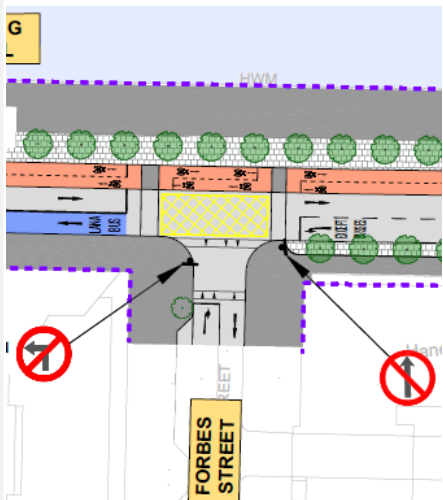
EXISTING



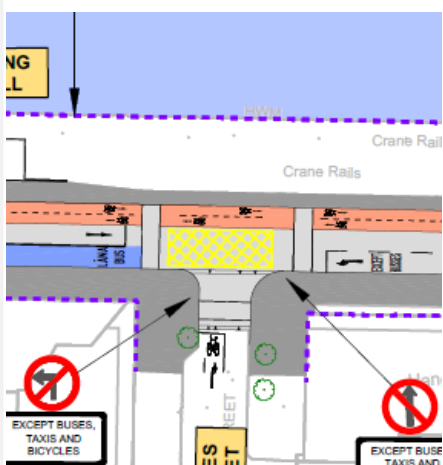
EPR



DRAFT PRO (PC2)



DRAFT PRO (PC3)



Change Made	Reason for Change	Impact of Change
<ol style="list-style-type: none"> <li>1. Shared space interface at pedestrian crossing removed</li> <li>2. Bus gate introduced on the western arm</li> <li>3. Parking removed from the western arm</li> </ol>	<ol style="list-style-type: none"> <li>1. To improve the segregation between cyclists and pedestrians at the crossing</li> <li>2. To provide dedicated bus facilities.</li> <li>3. No access to parking as a result of the bus gate</li> </ol>	<ol style="list-style-type: none"> <li>1. Improved safety for waiting pedestrians</li> <li>2. Local redistribution of traffic to unsuitable alternative streets</li> <li>3. Improved public realm area</li> </ol>
<ol style="list-style-type: none"> <li>1. Shared outbound traffic on western arm</li> <li>2. ASL removed from Forbes Street</li> <li>3. Tree landscaping included</li> </ol>	<ol style="list-style-type: none"> <li>1. To align with changes made at Cardiff Lane</li> <li>2. Design Error</li> <li>3. To ensure segregation between cyclists and pedestrians</li> </ol>	<ol style="list-style-type: none"> <li>1. Less impact from traffic redistribution on unsuitable alternative streets however reduced bus priority.</li> <li>2. Reduced cycle infrastructure provision</li> <li>3. Improved visual amenity and character of the campshires</li> </ol>
<ol style="list-style-type: none"> <li>1. ASL reinstated on Forbes Street</li> <li>2. Landscaping scope reduced</li> <li>3. Controlled crossings across cycle track</li> </ol>	<ol style="list-style-type: none"> <li>1. Rectifying an earlier design error</li> <li>2. Taking into consideration separate plans for the Liffey Campshires To ensure the safety of pedestrians</li> <li>3. To ensure pedestrian right of way across the cycle tracks</li> </ol>	<ol style="list-style-type: none"> <li>1. Cycle infrastructure reinstated</li> <li>2. Removed landscaping and footpath adjacent to the cycle track</li> <li>3. Increased intergreen times for pedestrian crossings</li> </ol>

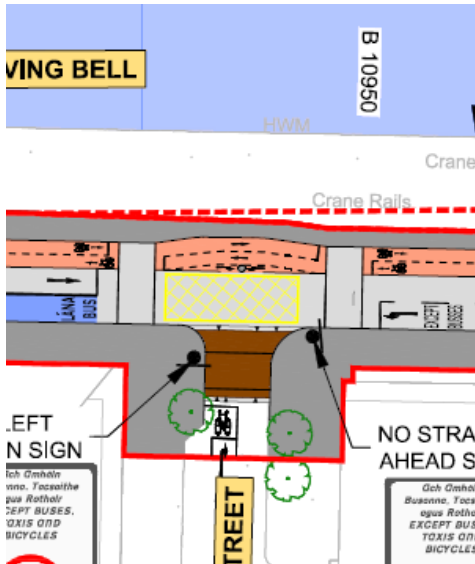
Subject	BusConnects Core Bus Corridors Junction Design Rationale		
Date	May 2022		
Route	Ringsend to City Centre Scheme	Job No/Ref	19.117

Forbes Street/Sir John Rogerson's Quay

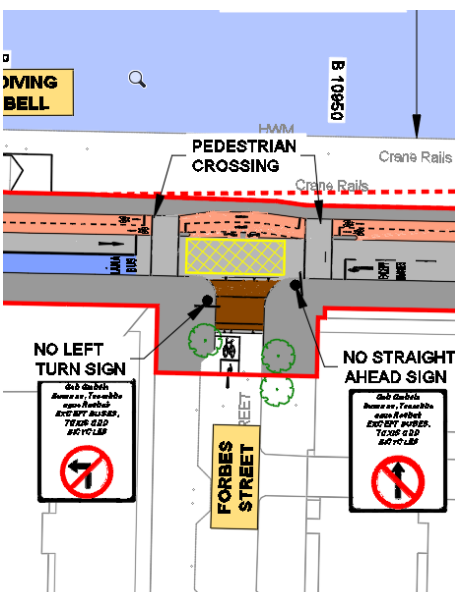
EXISTING



STAGE B REVIEW



FINAL DRAFT (WIP)

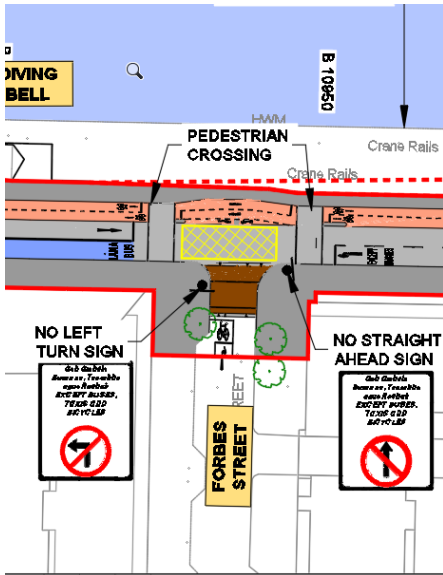


Change Made	Reason for Change	Impact of Change
1. Access provided for cyclists on the two-way cycle track to and from Forbes Street	1. To improve interconnectivity between radial and orbital cycle infrastructure	1. Direct access to the two-way cycle track provided to and from Forbes Street
1. None	1. None	1. None

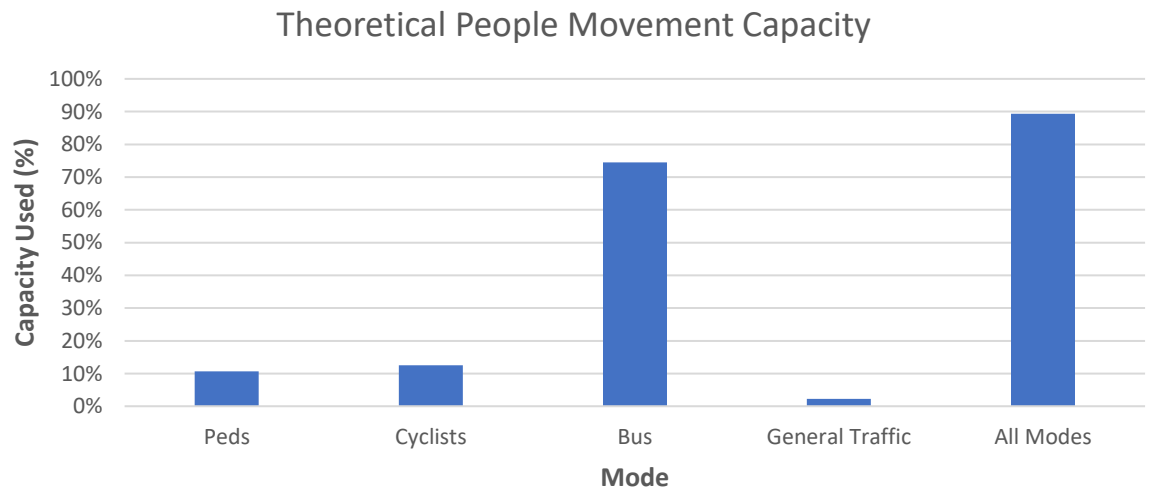
Subject	BusConnects Core Bus Corridors Junction Design Rationale		Job No/Ref	19.117
Date	May 2022			
Route	Ringsend to City Centre Scheme			

Forbes Street/Sir John Rogerson's Quay

Capacity / Delay

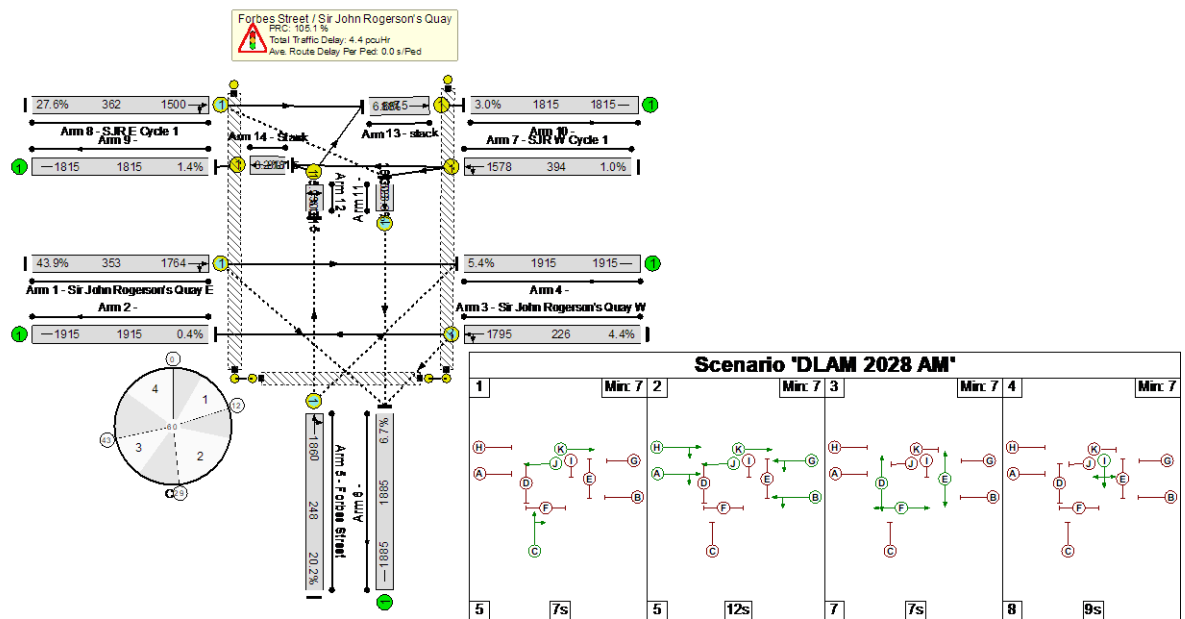


People Movement Calculator – Capacity



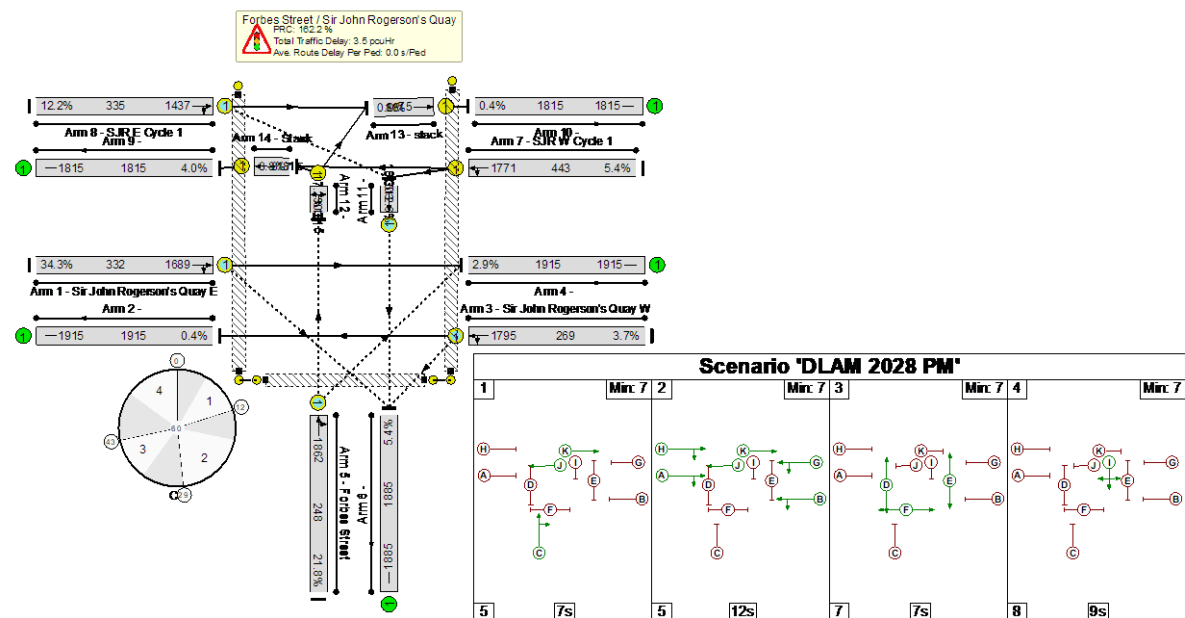
Do Something : 2028 : AM

Cycle = 60secs  
 PRC = 105.1%  
 Delay = 5pcuHr



Do Something : 2028 : PM

Cycle = 60secs  
 PRC = 162.2%  
 Delay = 4pcuHr





Subject	BusConnects Core Bus Corridors Junction Design Rationale		
Date	May 2022		
Route	Ringsend to City Centre Scheme	Job No/Ref	19.117

## Blood Stoney Road/Sir John Rogerson's Quay

### Summary

Junction is in compliance with the BusConnects Preliminary Design Guidance Booklet with respect to pedestrians, cyclists and buses.

The Junction has become fully signalised junction with new pedestrian crossings and improved cycle infrastructure.

The design rationale is to provide more priority to buses and to improve pedestrian and cyclist safety.

### Signal Operation

A four stage signal operation.

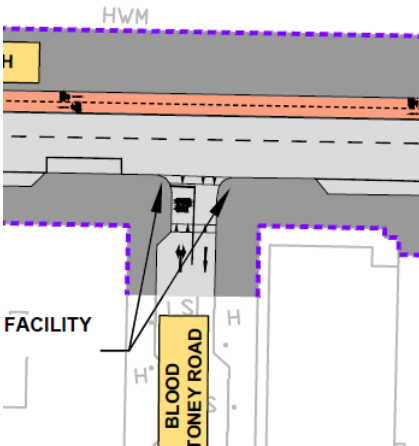
Pedestrian crossings operate in their own stage.

EXISTING



Change Made	Reason for Change	Impact of Change
-------------	-------------------	------------------

EPR

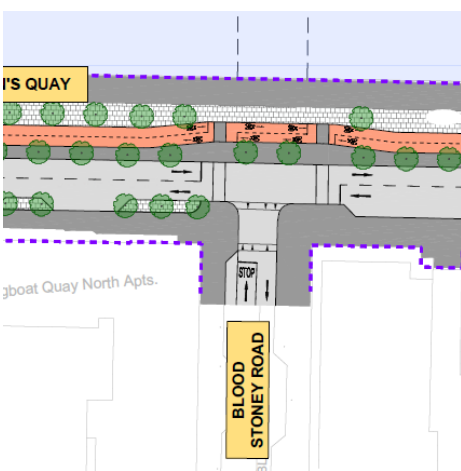


1. Improved two-way cycle track on the northside side.

1. Existing cycle track too narrow to safely accommodate two-way cycling

1. Improved cycle facilities

DRAFT PRO (PC2)

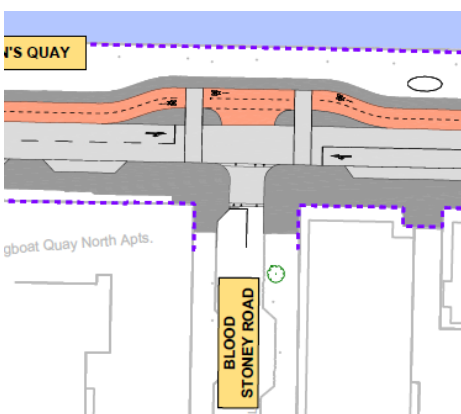


1. Fully signalised junction with wrap around pedestrian facilities
2. Tree landscaping included

1. To improve pedestrian crossing priority.
2. To ensure segregation between cyclists and pedestrians

1. Improved priority for pedestrians across all arms
2. Improved visual amenity and character of the campshires

DRAFT PRO (PC3)



1. Pedestrian crossing extended across cycle track
2. Landscaping scope reduced
3. Access provided for cyclists on the two-way cycle track to and from Blood Stoney Road

1. To ensure pedestrian right of way across the cycle tracks
2. Taking into consideration separate plans for the Liffey Campshires To ensure the safety of pedestrians
3. To improve interconnectivity between radial and orbital cycle infrastructure

1. Increased pedestrian intergreen times.
2. Removed landscaping and footpath adjacent to the cycle track
3. Direct access to the two-way cycle track provided to and from Blood Stoney Road

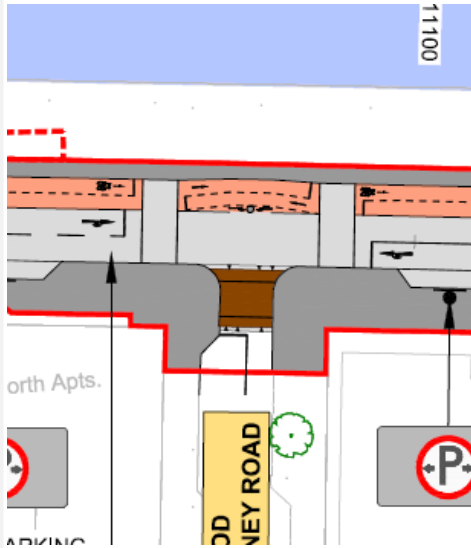
Subject	BusConnects Core Bus Corridors Junction Design Rationale		
Date	May 2022		
Route	Ringsend to City Centre Scheme	Job No/Ref	19.117

Blood Stoney Road/Sir John Rogerson's Quay

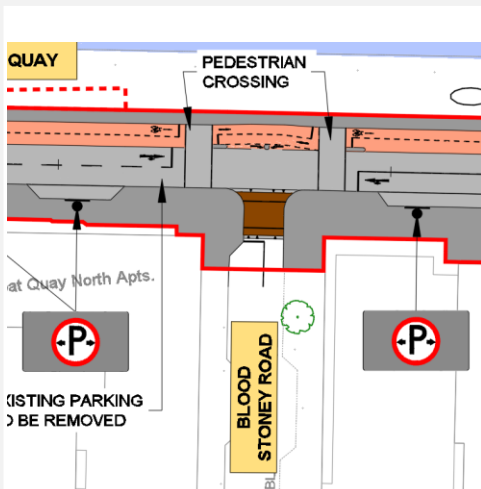
EXISTING



STAGE B REVIEW



FINAL DRAFT (WIP)

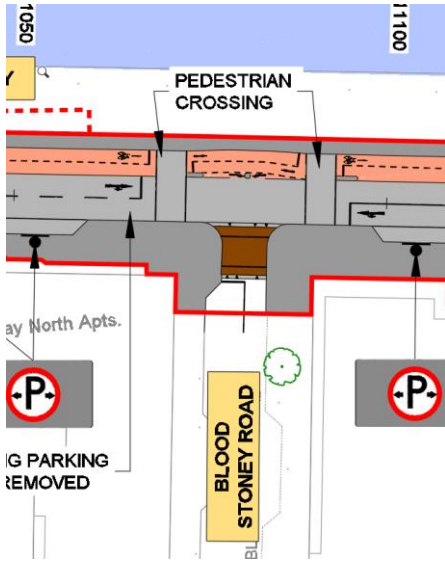


Change Made	Reason for Change	Impact of Change
<ol style="list-style-type: none"> <li>Cycle track footprint reduced</li> <li>All pedestrian crossings widened</li> </ol>	<ol style="list-style-type: none"> <li>To minimise pedestrian crossing lengths</li> <li>To improve pedestrian facilities</li> </ol>	<ol style="list-style-type: none"> <li>Reduced impact on the Liffey Campshires and reduced pedestrian intergreen times</li> <li>Improved pedestrian facilities</li> </ol>
<ol style="list-style-type: none"> <li>None</li> </ol>	<ol style="list-style-type: none"> <li>None</li> </ol>	<ol style="list-style-type: none"> <li>None</li> </ol>

Subject	BusConnects Core Bus Corridors Junction Design Rationale		
Date	May 2022		
Route	Ringsend to City Centre Scheme	Job No/Ref	19.117

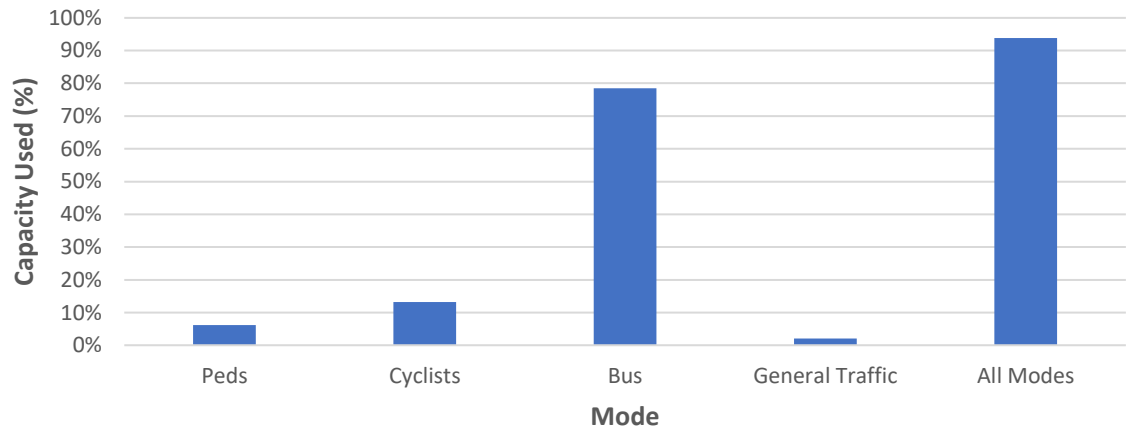
Blood Stoney Road/Sir John Rogerson's Quay

Capacity / Delay



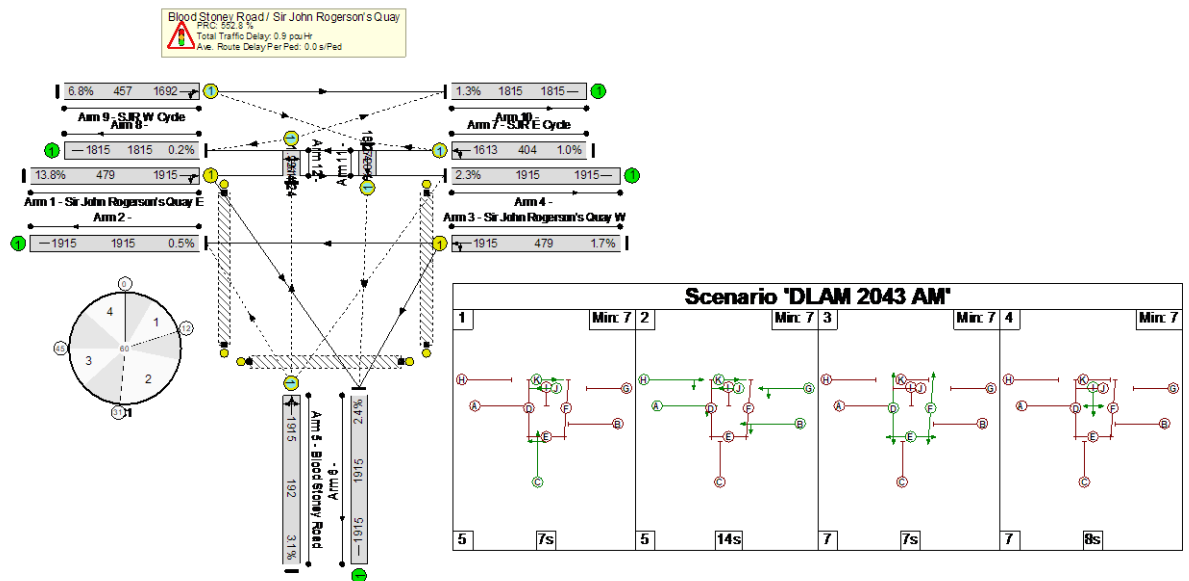
People Movement Calculator – Capacity

Theoretical People Movement Capacity



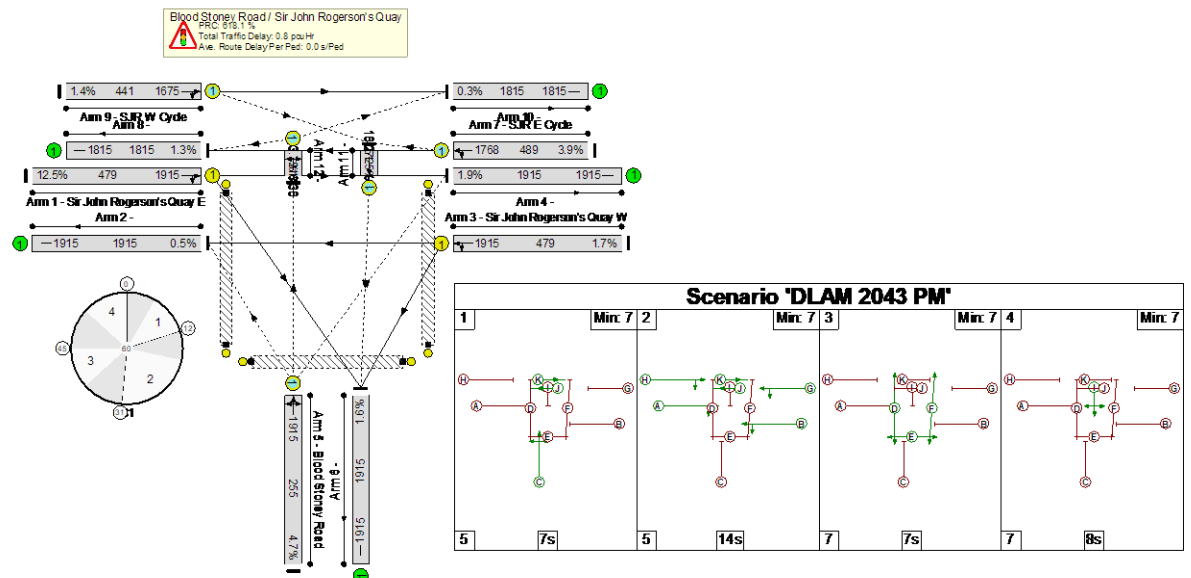
Do Something : 2028 : AM

Cycle = 60secs  
 PRC = 498.4%  
 Delay = 1pcuHr



Do Something : 2028 : PM

Cycle = 60secs  
 PRC = 713%  
 Delay = 1pcuHr



Subject	BusConnects Core Bus Corridors Junction Design Rationale		
Date	May 2022		
Route	Ringsend to City Centre Scheme	Job No/Ref	19.117

## Dodder PT Bridge

### Summary

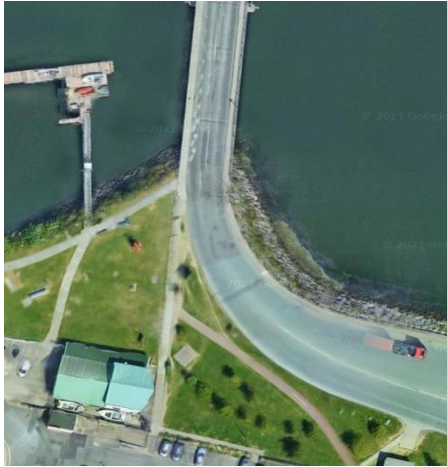
Junction is in compliance with the BusConnects Preliminary Design Guidance Booklet with respect to pedestrians, cyclists and buses.

The future junction is a 3-arm junction formed between link to existing Tom Clarke Bridge and link to proposed Dodder Bridge. The proposed bridge will only be crossed by buses and cycle lanes  
The design rationale is to provide more priority to buses and to improve pedestrian and cyclist safety.

### Signal Operation

A three stage signal operation.

Toucan and Pedestrian crossings operate in their own stage.



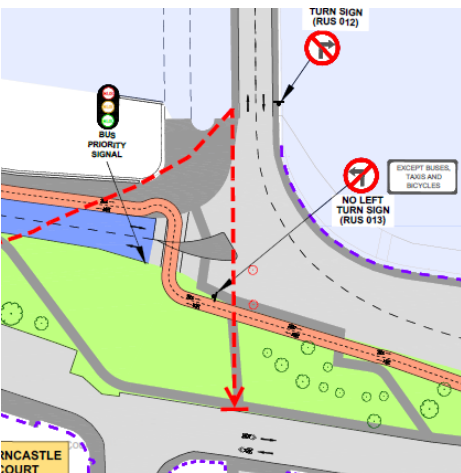
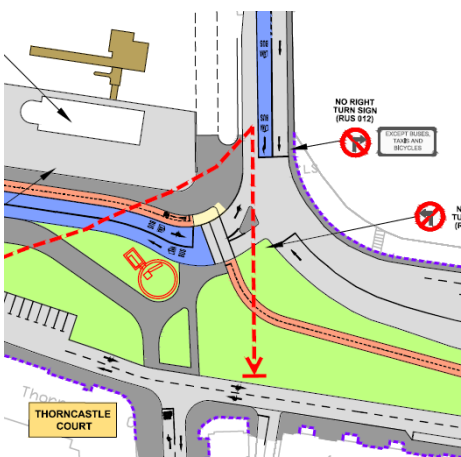
Change Made	Reason for Change	Impact of Change
<ol style="list-style-type: none"> <li>1. New public transport road link, and cycle and pedestrian facilities to and from the Dodder PT Bridge.</li> <li>2. Narrowed northbound traffic lane</li> <li>3. Tom Clarke Bridge increased to three lanes</li> <li>4. New cycle track adjacent to the toll road</li> <li>5. Relocation of the Rowing Club</li> </ol>	<ol style="list-style-type: none"> <li>1. To provide public transport, cycle and pedestrian access to the Dodder PT Bridge</li> <li>2. To reduce the road footprint</li> <li>3. To print a bus lane from the north towards the Dodder PT Bridge</li> <li>4. To accommodate the existing cycle demand in the area</li> <li>5. To accommodate the new link to the Dodder PT bridge</li> </ol>	<ol style="list-style-type: none"> <li>1. New signalised junction</li> <li>2. Reduced manoeuvrability for HGV's to Tom Clarke Bridge</li> <li>3. Bridge widened by either replacing existing Tom Clarke Bridge or provision of a new adjacent bridge</li> <li>4. Dedicated cycle infrastructure provision</li> <li>5. Improved public realm area</li> </ol>
<ol style="list-style-type: none"> <li>1. Separation of cycle and pedestrian crossing provision</li> <li>2. Priority control at the junction</li> <li>3. Northbound traffic lane width reinstated</li> <li>4. Modified public realm layout</li> </ol>	<ol style="list-style-type: none"> <li>1. To minimise the use of shared landing areas</li> <li>2. Reduced control at the junction</li> <li>3. To accommodate required HGV manoeuvrability</li> <li>4. To accommodate pedestrian desire lines</li> </ol>	<ol style="list-style-type: none"> <li>1. Improved segregation between cyclists and pedestrians</li> <li>2. Reduced priority for public transport</li> <li>3. Wider road carriageway footprint</li> <li>4. Improved pedestrian connectivity and desire lines accommodated</li> </ol>
<ol style="list-style-type: none"> <li>1. Cycle track relocated adjacent to York Road</li> <li>2. Signalised control introduced at the junction</li> <li>3. Modified public realm area</li> </ol>	<ol style="list-style-type: none"> <li>1. To improve cycle movements and quality of service</li> <li>2. To improve priority for public transport</li> <li>3. To improve accessibility for cyclists</li> </ol>	<ol style="list-style-type: none"> <li>1. Line markings and kerb locations amended.</li> <li>2. Line markings, kerb and island locations amended.</li> <li>3. Reduced accessibility for pedestrians</li> </ol>

EXISTING

EPR

DRAFT PRO (PC2)

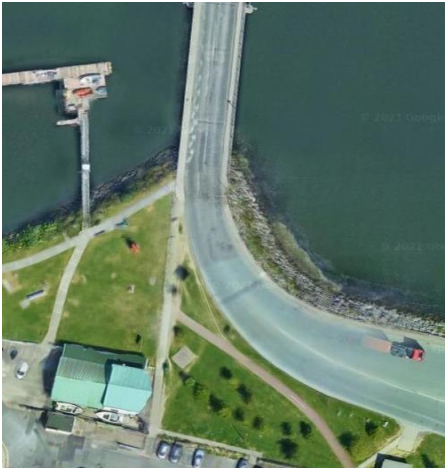
DRAFT PRO (PC3)



Subject	BusConnects Core Bus Corridors Junction Design Rationale		
Date	May 2022		
Route	Ringsend to City Centre Scheme	Job No/Ref	19.117

## Dodder PT Bridge

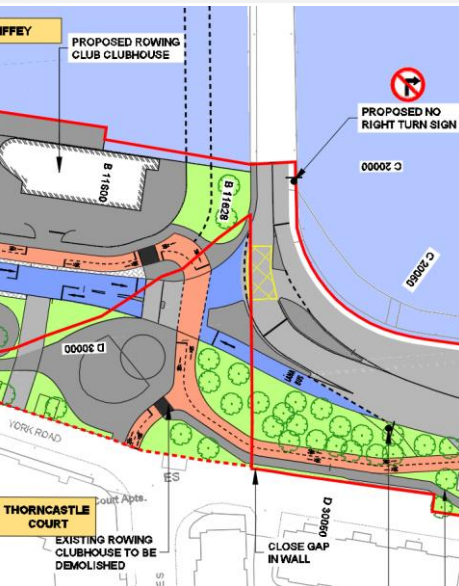
EXISTING



STAGE B REVIEW



FINAL DRAFT (WIP)



Change Made	Reason for Change	Impact of Change
<ol style="list-style-type: none"> <li>1. Pedestrian footpath adjacent to cycle track along York Road removed</li> <li>2. Signalised access to the Rowing Club</li> </ol>	<ol style="list-style-type: none"> <li>1. Connection to existing footpaths on York Road prioritised</li> <li>2. Improved priority for buses</li> </ol>	<ol style="list-style-type: none"> <li>1. Reduced pedestrian connectivity and desire lines accommodated</li> <li>2. Better control between</li> </ol>
<ol style="list-style-type: none"> <li>1. Pedestrian footpath reinstated adjacent to cycle track along York Road</li> <li>2. Zebra crossings across cycle tracks</li> </ol>	<ol style="list-style-type: none"> <li>1. To improve pedestrian facilities and connectivity</li> <li>2. To ensure pedestrian priority across the cycle tracks</li> </ol>	<ol style="list-style-type: none"> <li>1. Improved accommodation of pedestrian desire lines</li> <li>2. Improved safety for pedestrians crossing the cycle tracks</li> </ol>

Subject	BusConnects Core Bus Corridors Junction Design Rationale		
Date	May 2022		
Route	Ringsend to City Centre Scheme	Job No/Ref	19.117

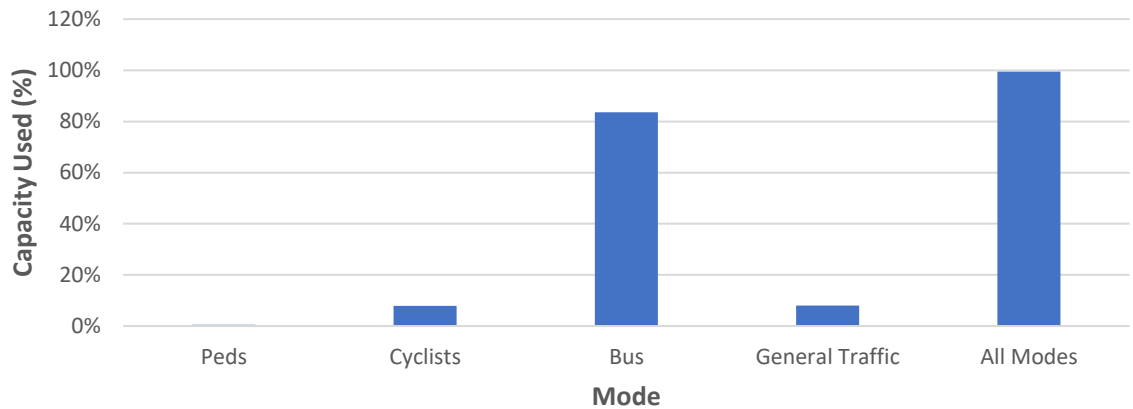
### Dodder PT Bridge

### Capacity / Delay



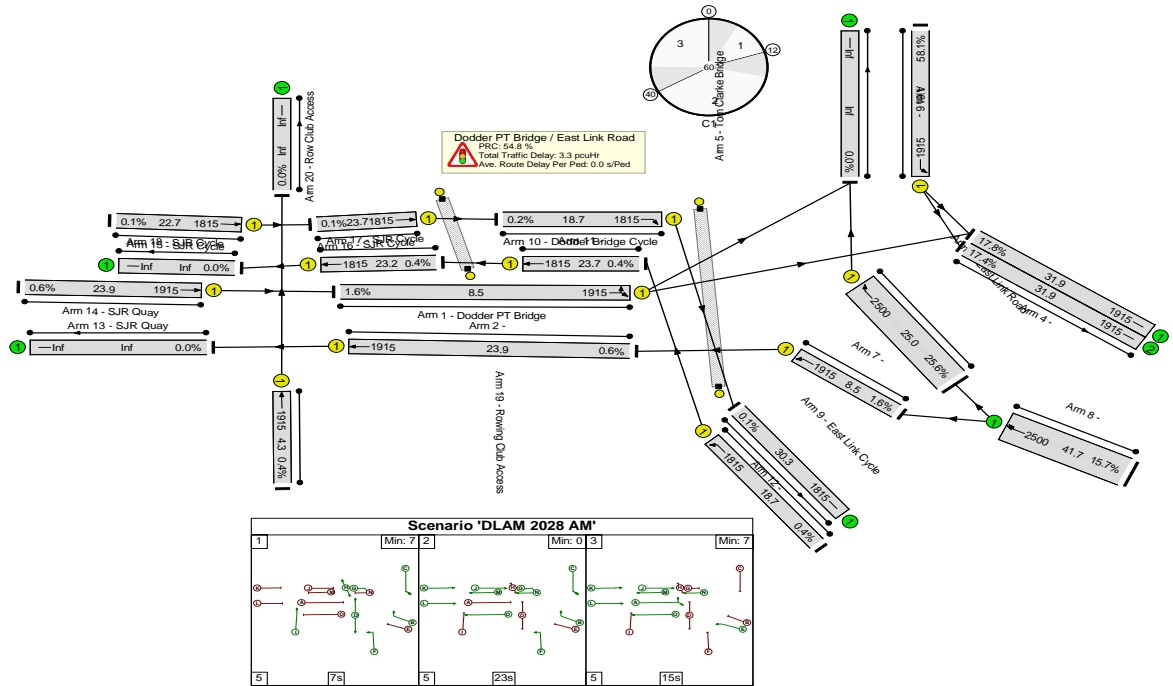
### People Movement Calculator – Capacity

#### Theoretical People Movement Capacity



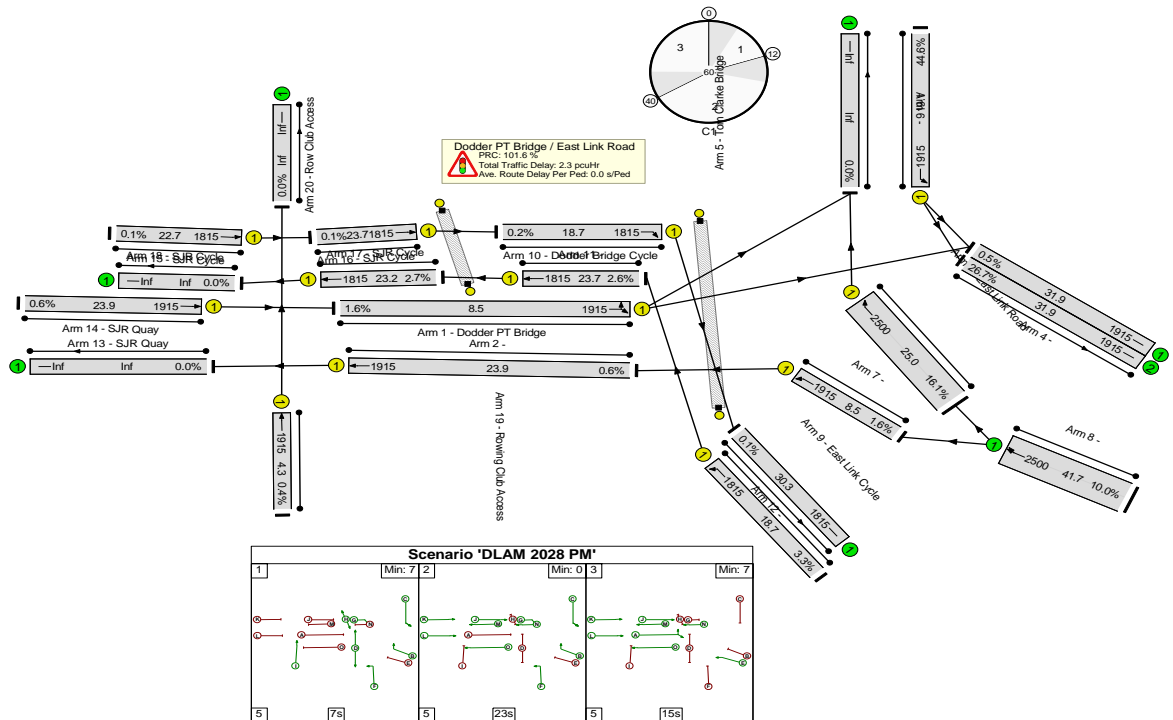
### Do Something : 2028 : AM

Cycle = 60secs  
 PRC = 54.8%  
 Delay = 3pcuHr  
  
 Bus Delay  
 Inbound = 20s  
 Outbound = 20s



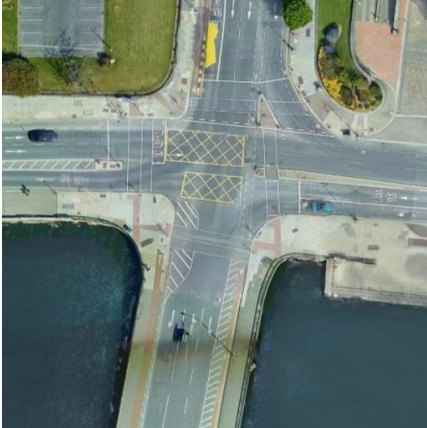
### Do Something : 2028 : PM

Cycle = 60secs  
 PRC = 101.6%  
 Delay = 2pcuHr  
  
 Bus Delay  
 Inbound = 20s  
 Outbound = 20s



Subject	BusConnects Core Bus Corridors Junction Design Rationale		
Date	May 2022		
Route	Ringsend to City Centre Scheme	Job No/Ref	19.117

**Custom House Quay/Memorial Bridge**



**Summary**

Junction is in compliance with the BusConnects Preliminary Design Guidance Booklet with respect to pedestrians, cyclists and buses.  
 Layout of junction updated introducing protected cycle infrastructure and new Bus lane infrastructure in the eastbound and westbound direction and improving approach and egress alignments.  
 The design rationale is to provide more priority to buses, enable bus priority signalling, and to improve pedestrian and cyclist safety.

**Signal Operation**

A six stage signal operation.  
 Pedestrian crossings operate in separate stages.

Change Made	Reason for Change	Impact of Change
-------------	-------------------	------------------

EXISTING

EPR

DRAFT PRO (PC2)

DRAFT PRO (PC3)

N/A

N/A

N/A

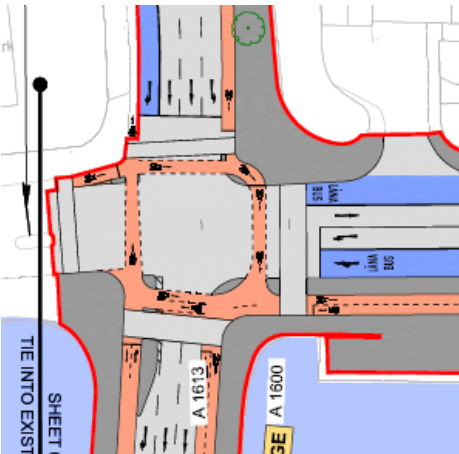
Subject	BusConnects Core Bus Corridors Junction Design Rationale		
Date	May 2022		
Route	Ringsend to City Centre Scheme	Job No/Ref	19.117

Custom House Quay/Memorial Bridge

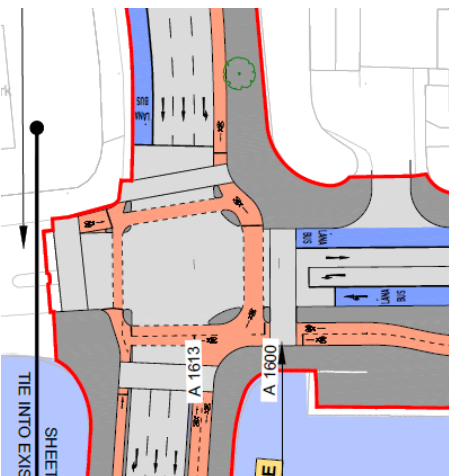
EXISTING



STAGE B REVIEW



FINAL DRAFT (WIP)



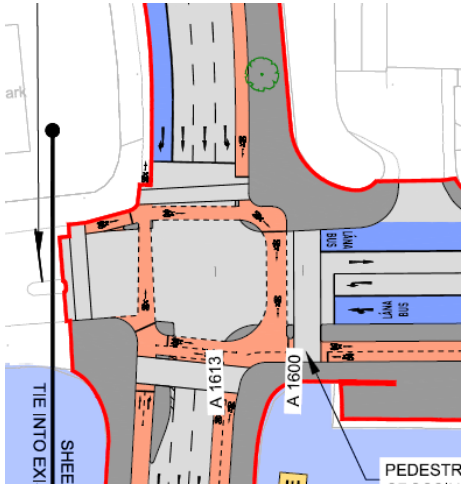
Change Made	Reason for Change	Impact of Change
<ol style="list-style-type: none"> <li>1. Inbound lane reconfiguration with bus lane relocated to nearside lane</li> <li>2. Outbound bus lane provided</li> <li>3. Continuous Pedestrian crossings separated from Cycle crossing</li> <li>4. Protected cycle infrastructure</li> <li>5. Physical island provided on Memorial Bridge</li> </ol>	<ol style="list-style-type: none"> <li>1. To tie in with lane configurations along the north quays</li> <li>2. To improve bus provision and priority along the north quays</li> <li>3. To remove staggered crossing requirements and provide single crossing stages</li> <li>4. To improve safety and permeability of cyclists through the junction</li> <li>5. To provide a large cycle waiting area and prevent weaving manoeuvres by vehicles through the junction</li> </ol>	<ol style="list-style-type: none"> <li>1. Separate staging required due to conflict of movements with ahead buses and left turning vehicles</li> <li>2. Improved bus permeability and priority along the north quays</li> <li>3. Improved pedestrian facilities however increased intergreen time requirements for pedestrian phases</li> <li>4. Improved safety and permeability for cyclists through the junction</li> <li>5. Weaving manoeuvres by vehicles constrained</li> </ol>
<ol style="list-style-type: none"> <li>1. Pedestrian crossings widened where possible</li> <li>2. Physical island on Memorial Bridge removed</li> <li>3. Southbound cycle lane through the junction widened</li> <li>4. Northbound cycle lane on Memorial Bridge narrowed</li> </ol>	<ol style="list-style-type: none"> <li>1. To improve the crossing capacity and safety of pedestrians</li> <li>2. To accommodate ahead buses from Memorial Road</li> <li>3. To accommodate the high volume of cyclists expected</li> <li>4. Lower volume of cyclists expected to use this cycle lane</li> </ol>	<ol style="list-style-type: none"> <li>1. Improved pedestrian crossing facilities</li> <li>2. Improved opportunities for bus routing</li> <li>3. Improved facilities for the high volumes of cyclists expected</li> <li>4. Smaller landing area required for cyclists</li> </ol>



Subject	BusConnects Core Bus Corridors Junction Design Rationale		
Date	May 2022		
Route	Ringsend to City Centre Scheme	Job No/Ref	19.117

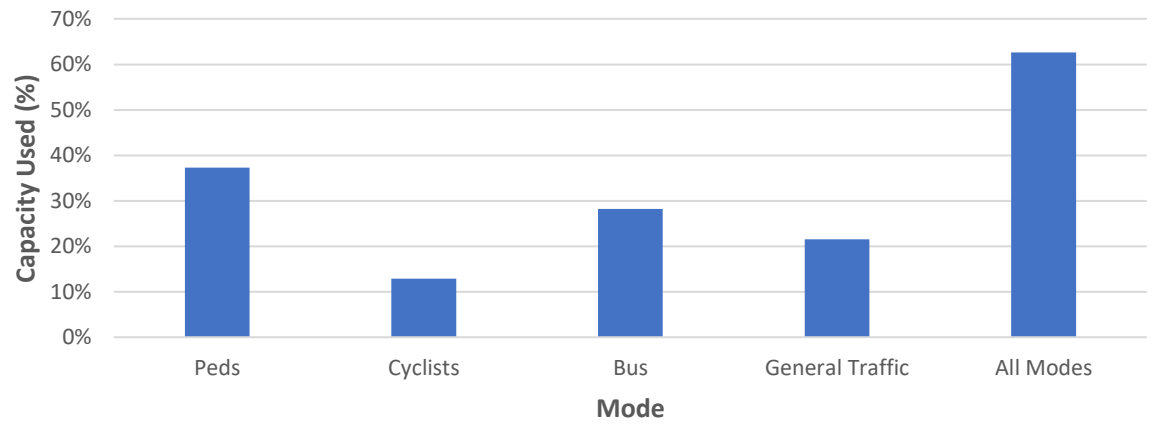
Custom House Quay/Memorial Bridge

Capacity / Delay



People Movement Calculator – Capacity

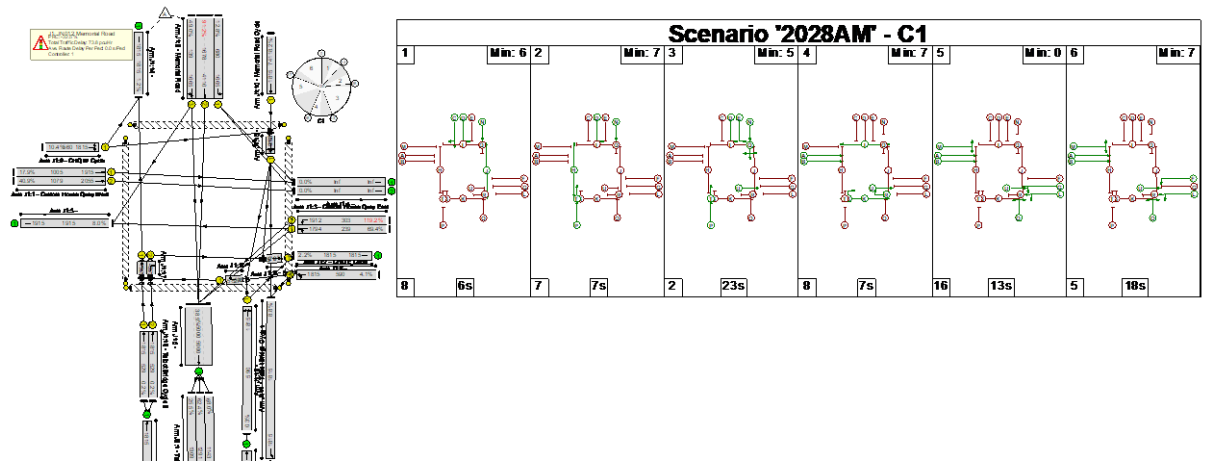
Theoretical People Movement Capacity



Do Something : 2028 : AM

Cycle = 120secs  
 PRC = -32.5%  
 Delay = 73pcuHr

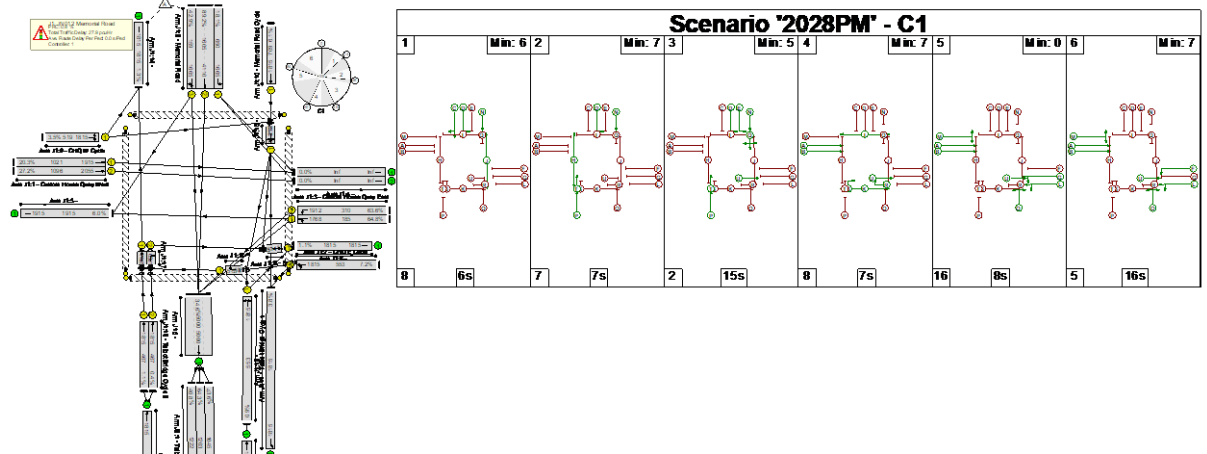
Bus Delay  
 Inbound = 74s  
 Outbound = 17s



Do Something : 2028 : PM

Cycle = 105secs  
 PRC = 0.9%  
 Delay = 28pcuHr

Bus Delay  
 Inbound = 72s  
 Outbound = 15s



Subject	BusConnects Core Bus Corridors Junction Design Rationale		
Date	May 2022		
Route	Ringsend to City Centre Scheme	Job No/Ref	19.117

**City Quay/Memorial Bridge**

**Summary**

Junction is in compliance with the BusConnects Preliminary Design Guidance Booklet with respect to pedestrians, cyclists and buses.

Layout of junction updated introducing protected cycle infrastructure and new Bus lane infrastructure and improving approach and egress alignments.

The design rationale is to provide more priority to buses, enable bus priority signalling, and to improve pedestrian and cyclist safety.

**Signal Operation**

A four stage signal operation.

Pedestrian crossings operate in separate stages.



EXISTING

EPR

DRAFT PRO (PC2)

DRAFT PRO (PC3)

Change Made	Reason for Change	Impact of Change
N/A		
N/A		
N/A		

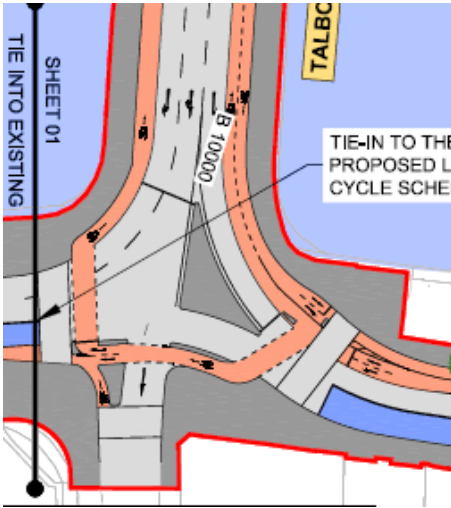
Subject	BusConnects Core Bus Corridors Junction Design Rationale		
Date	May 2022		
Route	Ringsend to City Centre Scheme	Job No/Ref	19.117

City Quay/Memorial Bridge

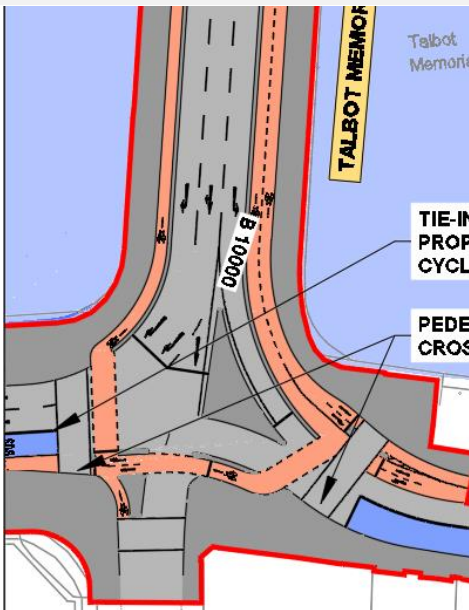
EXISTING



STAGE B REVIEW



FINAL DRAFT (WIP)

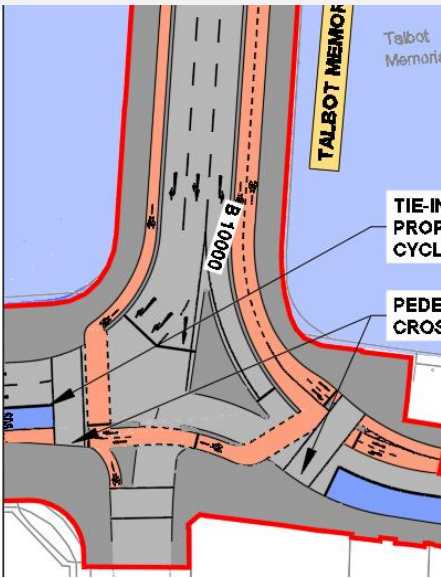


Change Made	Reason for Change	Impact of Change
<ol style="list-style-type: none"> <li>1. Lane reconfiguration to restrict access to City Quay to one lane</li> <li>2. Bus lane introduced in the inbound direction from City Quay</li> <li>3. Reconfiguration of cycle infrastructure across Moss Street and City Quay</li> </ol>	<ol style="list-style-type: none"> <li>1. To facilitate an inbound bus lane on City Quay</li> <li>2. To improve bus priority along the south quays.</li> <li>3. To avoid conflict with the contra-flow bus lane</li> </ol>	<ol style="list-style-type: none"> <li>1. Reduced capacity to City Quay</li> <li>2. Island reconfiguration required to accommodate contra flow bus lane</li> <li>3. Improved cycle facilities</li> </ol>
<ol style="list-style-type: none"> <li>1. Memorial Bridge inbound stop lines set forward</li> </ol>	<ol style="list-style-type: none"> <li>1. To maximise stacking space and weaving manoeuvres along Memorial Bridge</li> </ol>	<ol style="list-style-type: none"> <li>1. Improved operational capacity of the junction and reduced intergreen times.</li> </ol>

Subject	BusConnects Core Bus Corridors Junction Design Rationale		
Date	May 2022		
Route	Ringsend to City Centre Scheme	Job No/Ref	19.117

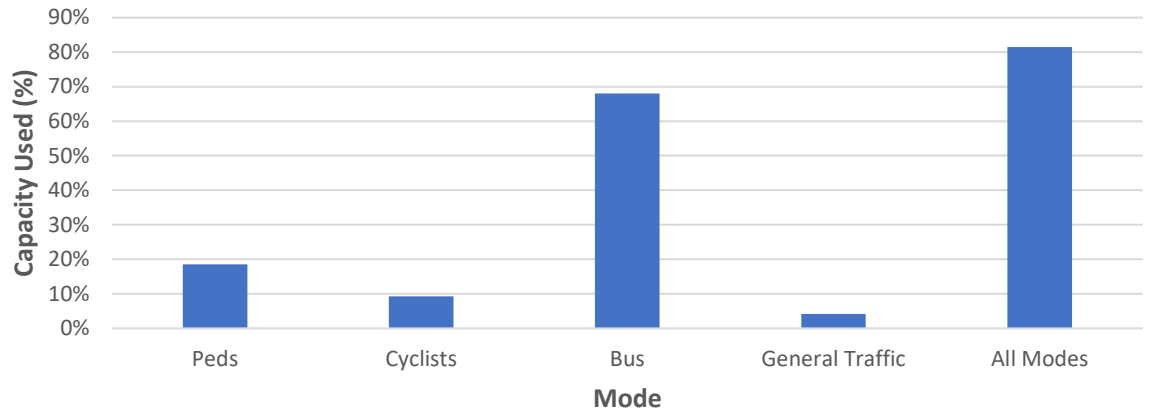
### City Quay/Memorial Bridge

### Capacity / Delay



### People Movement Calculator – Capacity

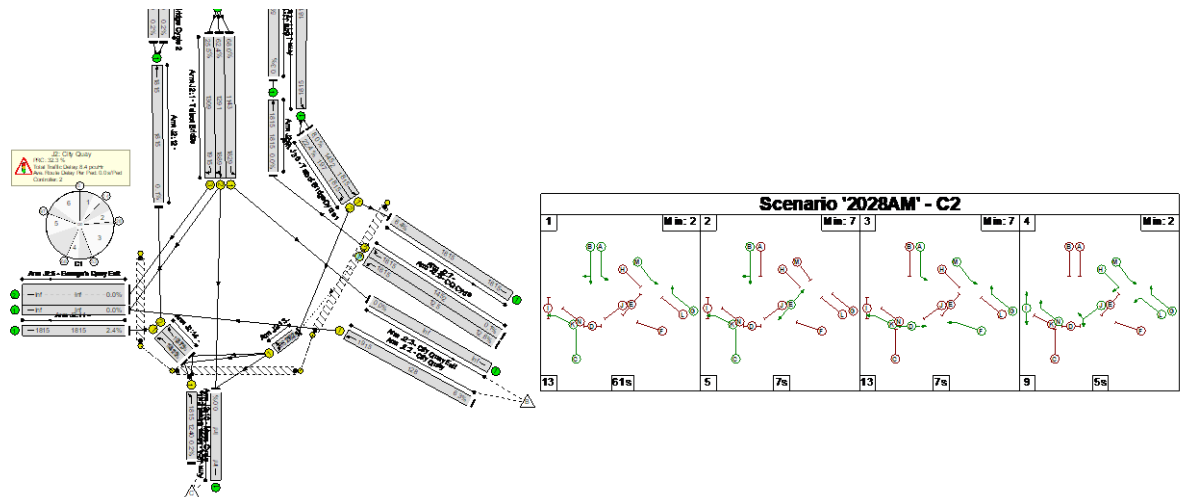
Theoretical People Movement Capacity



### Do Something : 2028 : AM

Cycle = 120secs  
 PRC = 32.3%  
 Delay = 8pcuHr

Bus Delay  
 Inbound = 59s  
 Outbound = N/A



### Do Something : 2028 : PM

Cycle = 105secs  
 PRC = 40%  
 Delay = 10pcuHr

Bus Delay  
 Inbound = 59s  
 Outbound = N/A

